

# K KELLY V VANGUS

---

QUALITY STOCK & SERVICE

---

## ANNUAL BULL SALE



THURSDAY 21 MARCH 2024

---

60 - 18 MONTH ANGUS BULLS

# KELLY ANGUS

## QUINN Q209

*Quality Next Gen Performance!*



**DOB:** 26/07/2019 | **ID:** GXNQ209 | AMF, CAF, DDF, NHF, RGF

- Quinn boasts a tremendous carcass, along with a fantastic topline. He is a very easy doing bull, whose temperament is impeccable. He gets around on a solid set of feet and legs and has a 40cm scrotal.
- His first calves are on the ground, being born approximately 5 days early, with an average birthweight of 32kg.
- Quinn is the only bull in the breed that combines an elite package of calving ease, short gestation, explosive growth, docility and high end carcass merit. He is an exciting prospect!

**SIRE:**  
 CONNEALY BLACK GRANITE  
**QHF WWA BLACK ONYX 5Q11**  
 WILKS BLACKCAP OD82

**DAM:**  
 G A R PROPHET  
**LAWSONS PROPHET L1327**  
 LAWSONS BARTEL E7 J1127

Trait	CEDir	CEDtrs	BW	200D	400D	600D	MCW	Milk
EBV	+7.9	+9.7	+1.8	+64	+114	+142	+116	+26
RANK	7	2	11	6	5	10	28	4

Trait	SS	CWT	EMA	Rib	Rump	IMF	\$A	\$A-L
EBV	+0.6	+89	+7.0	-1.3	-2.9	+2.6	\$294	\$491
RANK	93	6	44	77	88	40	1	1

TOP 10% TOP 20%



**JACK LAURIE**  
 0467 484 479

★★★★★  
 CALVING EASE

★★★★★  
 GROWTH

★★★★★  
 CARCASS

★★★★★  
 MATERNAL

★★★★★  
 DOCILITY

★★★★★  
 STRUCTURE

# K KELLY V VANGUS

## ANNUAL BULL SALE THURSDAY 21 MARCH 2024

60 - 18 MONTH ANGUS BULLS

SALE 1PM - INSPECTIONS FROM 10AM

(INSPECTIONS ARE WELCOME AT ANY TIME PRIOR TO SALE BY APPOINTMENT)

LUNCH & REFRESHMENTS PROVIDED

Patrick Joyce 0434 559 101

Sale Location: On Farm:  
171 Nashs Road, Yea VIC 3717

[kellyangus.com.au](http://kellyangus.com.au)



### Nutrien Stud Stock

Peter Godbolt 0457 591 929  
Tim Woodham 0436 015 115

### Nutrien Yea

Chris Pollard 0428 993 860  
Matt Pollard 0459 030 892  
Rick Wills 0437 469 079  
Tyson Bush 0419 756 746



**BULL INSPECTION DAY**  
WEDNESDAY 13 MARCH  
10AM TO 3PM



## Biosecurity

Kelly Angus hold current status of J-BAS 8.

## Bull Health

All bulls catalogued for sale have been semen tested by Drew Pickford –Nationwide AB. All bulls are tested negative for Pestivirus. All sale bulls are fully vaccinated with Pestigard, 7 in 1 and Vibrovax. They have also had Selovin LA, Vitamin AD&E and Bomection injectable drench.

## Insurance

Kelly Angus recommends insuring all purchases from the fall of the hammer. An insurance representative will be in attendance on the day.

## Free Delivery

We will endeavour to personally deliver your bulls to your property. For interstate clients we will arrange transport as soon as possible.

## Rebate

A 3% rebate will apply to agents that introduce their clients prior to the sale and attend the sale with or on behalf of clients. Accounts must be settled within 10 days.

## Catering

Morning Tea and Lunch will be provided.

## Sale Time/Inspections

The sale will commence at 1pm on Thursday 21st March 2024. Inspections from 10am on Sale Day. We welcome inspections by appointment any time prior to the Sale.

## Safety

All sale bulls are quiet to handle and we have the utmost of confidence in their temperament. Sale day places added pressure on the bulls and we ask that you use caution while inspecting the bulls. Visitors enter bull pens at their own risk. Children must be supervised at all times.

## Quality Assurance

To ensure we provide our clients a product that is of the highest quality we have strict procedures that are followed from birth. All calves are tagged at birth with a management tag and NLIS tag. They are weighed and DNA collected via TSU. From this sample we verify parentage, genomic test, Pesti test and test for genetic defects if there is any probability in the pedigree.

Calves are vaccinated at 4-6 weeks with 7 in 1, a booster shot is given between 8-10 weeks of age. At weaning calves are weighed and receive a triple acting oral drench, Selovin LA, and are vaccinated with Pestigard and IBR MH. Booster shots are given as required.

Mature Cow Weights are also recorded at weaning. All weaner bulls are kept in the one management group until 400 day weights are recorded along with Ultrasound Scanning for EMA, Fats and IMF. Scrotal Size and any abnormalities are also recorded. At that point any culls are removed.

At around 16 months the bulls are independently structurally assessed and docility scored by Jim Green. At this time bulls are also semen tested and vaccinated with Vibrovax.

## Conditions of Sale

We trust that the Bull/s you purchase will perform as you expect and provide ongoing value to you. The rigorous structural assessment practices adopted at our farm are intended to ensure that all livestock continue to meet our high standards for genetics, performance and structural integrity. Our commitment to our purchasers is second to none.

In the event that the Bull/s, the subject of the purchase, suffers a structural or fertility breakdown within 2 years of the day of sale Kelly Angus will refund or replace the bull provided the problem is not caused by injury or disease incurred after taking delivery.

The purchaser may:

- Request a full refund of the purchase price (nett of GST) OR
- Negotiate for the purchase of a replacement Kelly Angus Bull of similar genetic make-up.

Conditions:

1. Any claim for a refund or credit must be accompanied by a full veterinary report.
2. Any refund or credit will be equal to the purchase price less the salvage value of the bull.

We strongly recommend you observe your new bull when he is first introduced to the cows and if you have any concerns, please do not hesitate to contact us.

We advise you to insure your bull for at least the first joining period and it is also advisable to pregnancy test 6-8 weeks following joining to ensure satisfactory pregnancy rates have been reached.

## Disclaimer

Whilst all due care and attention have been paid in the compilation of this catalogue, neither the vendor nor the selling agents or the representative(s) thereof assume any responsibility whatsoever for the correctness, use or interpretation of the information in this sale catalogue.



**The Kelly Angus team invite you to attend our Annual on farm Bull Sale.**

On offer this year are 60 - 18 to 20-month-old bulls that are ready to work. The first sons of Lawsons Rocky R4010 are an outstanding draft and we have catalogued our largest offering of Texas Powerplay P613 sons. There is also a selection of GAR Hometowns, GAR Transendents and sons of our homebred walking sires.

It is rewarding to look through the line up and see a consistency in the bulls. Our breeding objectives of carcase and calving ease wrapped into an eye appealing package with a good temperament is hitting its target.

Over 2/3rds of the bulls are suitable for heifer joining while 70 percent of the group are above breed average for Eye Muscle Area and 90 percent are higher than breed average for Inter Muscular Fat.

We aim to breed bulls that can produce calves that are born early and small then growing quickly and are quiet. They grow out into weaners that are long, deep and able to finish and marble on grass.

When attending local weaner sales and visiting clients across the State, we have been very pleased

to see how well our genetics have been performing. People who have purchased weaners with Kelly Angus genetics have been extremely happy with how they grow out and we have had many comments on their quiet temperaments.

The Powerplay sons are looking great this year. They are real standouts and everyone who has seen them have been impressed. They have strong sirey heads, good structure, plenty of length and depth and a heap of softness. The Powerplay daughters in the herd have calved easily and are milking well.

Our first sons of Rocky are a powerful line-up. They have natural thickness and overall balance. They are consistently at the top of the group for weight, eye muscle area and IMF scanning. We are extremely happy with how Rocky has matured and we can see this potential in his sons this year.

Kelly Angus Ringleader R232 has certainly made an impression and has 9 sons in the sale. R232 is a RES Darkfire son that we retained to use in the herd. He carries a lot of meat, is medium framed and sound. R232 is in the Top 20% of the

breed for 11 traits and is Top 1% for both \$A and \$A-L. The R232 sons have weighed and scanned very well. It is pleasing to see how well they compare to imported AI sires.

We invite you to inspect the bulls on Wednesday 13th of March or we are happy to organise a time prior to the sale to look at the bulls in the paddock.

We value spending time discussing your operation and helping to find a bull that suits your objectives and will maximise your returns.

The sale will be interfaced with AuctionsPlus and video footage on all bulls will be available.

The Kelly Angus on Farm Auction will start at 1pm Thursday 21st March.

We look forward to seeing you at our sale.

*Patrick Joyce*

## UNDERSTANDING THE TRANSTASMAN ANGUS CATTLE EVALUATION (TACE)



### What is the TransTasman Angus Cattle Evaluation?

The TransTasman Angus Cattle Evaluation is the genetic evaluation program adopted by Angus Australia for Angus and Angus influenced beef cattle. The TransTasman Angus Cattle Evaluation uses Best Linear Unbiased Prediction (BLUP) technology to produce Estimated Breeding Values (EBVs) of recorded cattle for a range of important production traits (e.g. weight, carcase, fertility).

The TransTasman Angus Cattle Evaluation is an international genetic evaluation and includes pedigree, performance and genomic information from the Angus Australia and Angus New Zealand databases, along with selected information from the American and Canadian Angus Associations.

The TransTasman Angus Cattle Evaluation utilises a range of genetic evaluation software, including the internationally recognised BLUPF90 family of programs, and BREEDPLAN® beef genetic evaluation analytical software, as developed by the Animal Genetics and Breeding Unit (AGBU), a joint institute of NSW Agriculture and the University of New England, and Meat and Livestock Australia Limited (MLA).

### What is an EBV?

An animal's breeding value can be defined as its genetic merit for each trait. While it is not possible to determine an animal's true breeding value, it is possible to estimate it. These estimates of an animal's true breeding value are called EBVs (Estimated Breeding Values).

EBVs are expressed as the difference between an individual animal's genetics and a historical genetic level (i.e. group of animals) within the TACE genetic evaluation, and are reported in the units in which the measurements are taken.

### Using EBVs to Compare the Genetics of Two Animals

TACE EBVs can be used to estimate the expected difference in the genetics of two animals, with the expected difference equating to half the difference in the EBVs of the animals, all other things being equal (e.g. they are joined to the same animal/s).

For example, a bull with a 200 Day Growth EBV of +60 would be expected to produce progeny that are, on average, 10 kg heavier at 200 days of age than a bull with a 200 Day Growth EBV of +40 kg (i.e. 20 kg difference between the sire's EBVs, then halved as the sire only contributes half the genetics).

Or similarly, a bull with an IMF EBV of +3.0 would be expected to produce progeny with on average, 1% more intramuscular fat in a 400 kg carcase than a bull with a IMF EBV of +1.0 (i.e. 2% difference between the sire's EBVs, then halved as the sire only contributes half the genetics).

### Using EBVs to Benchmark an Animal's Genetics with the Breed

EBVs can also be used to benchmark an animal's genetics relative to the genetics of other Angus or Angus infused animals recorded with Angus Australia.

To benchmark an animal's genetics relative to other Angus animals, an animal's EBV can be compared to the EBV reference tables, which provide:

- the breed average EBV
- the percentile bands table

The current breed average EBV is listed on the bottom of each page in this publication, while the current EBV reference tables are included at the end of these introductory notes. For easy reference, the percentile band in which an animal's EBV ranks is also published in association with the EBV.

### Considering Accuracy

An accuracy value is published with each EBV, and is usually displayed as a percentage value immediately below the EBV.

The accuracy value provides an indication of the reliability of the EBV in estimating the animal's genetics (or true breeding value), and is an indication of the amount of information that has been used in the calculation of the EBV.

EBVs with accuracy values below 50% should be considered as preliminary or of low accuracy, 50-74% as of medium accuracy, 75-90% of medium to high accuracy, and 90% or greater as high accuracy.

### Description of TACE EBVs

EBVs are calculated for a range of traits within TACE, covering calving ease, growth, fertility, maternal performance, carcase merit, feed efficiency and structural soundness. A description of each EBV included in this publication is provided on the following page.

## UNDERSTANDING ESTIMATED BREEDING VALUES (EBVS)

Calving Ease/Birth	CEDir	%	Genetic differences in the ability of a sire's calves to be born unassisted from 2 year old heifers.	Higher EBVs indicate fewer calving difficulties in 2 year old heifers.
	CEDir	%	Genetic differences in the ability of a sire's daughters to calve unassisted at 2 years of age.	Higher EBVs indicate fewer calving difficulties in 2 year old heifers.
	GL	days	Genetic differences between animals in the length of time from the date of conception to the birth of the calf.	Lower EBVs indicate shorter gestation length.
	BW	kg	Genetic differences between animals in calf weight at birth.	Lower EBVs indicate lighter birth weight.
Growth	200 Day	kg	Genetic differences between animals in live weight at 200 days of age due to genetics for growth.	Higher EBVs indicate heavier live weight.
	400 Day	kg	Genetic differences between animals in live weight at 400 days of age.	Higher EBVs indicate heavier live weight.
	600 Day	kg	Genetic differences between animals in live weight at 600 days of age.	Higher EBVs indicate heavier live weight.
	MCW	kg	Genetic differences between animals in live weight of cows at 5 years of age.	Higher EBVs indicate heavier mature weight.
	Milk	kg	Genetic differences between animals in live weight at 200 days of age due to the maternal contribution of its dam.	Higher EBVs indicate heavier live weight.
Fertility	DtC	days	Genetic differences between animals in the time from the start of the joining period (i.e. when the female is introduced to a bull) until subsequent calving.	Lower EBVs indicate shorter time to calving.
	SS	cm	Genetic differences between animals in scrotal circumference at 400 days of age.	Higher EBVs indicate larger scrotal circumference.
Carcase	CWT	kg	Genetic differences between animals in hot standard carcase weight at 750 days of age.	Higher EBVs indicate heavier carcase weight.
	EMA	cm <sup>2</sup>	Genetic differences between animals in eye muscle area at the 12/13th rib site in a 400 kg carcase.	Higher EBVs indicate larger eye muscle area.
	Rib Fat	mm	Genetic differences between animals in fat depth at the 12/13th rib site in a 400 kg carcase.	Higher EBVs indicate more fat.
	P8 Fat	mm	Genetic differences between animals in fat depth at the P8 rump site in a 400 kg carcase.	Higher EBVs indicate more fat.
	RBV	%	Genetic differences between animals in boned out saleable meat from a 400 kg carcase.	Higher EBVs indicate higher yield.
	IMF	%	Genetic differences between animals in intramuscular fat (marbling) at the 12/13th rib site in a 400 kg carcase.	Higher EBVs indicate more intramuscular fat.
Feed/Temp.	NFI-F	kg/day	Genetic differences between animals in feed intake at a standard weight and rate of weight gain when animals are in a feedlot finishing phase.	Lower EBVs indicate more feed efficiency.
	Doc	%	Genetic differences between animals in temperament.	Higher EBVs indicate better temperament.
Structure	Claw Set	score	Genetic differences in claw set structure (shape and evenness of claws).	Lower EBVs indicate a lower score.
	Foot Angle	score	Genetic differences in foot angle (strength of pastern, depth of heel).	Lower EBVs indicate a lower score.
	Leg Angle	score	Genetic differences in rear leg structure when viewed from the side (angle at front of the hock).	Lower EBVs indicate a lower score.
Selection Index	\$A	\$	Genetic differences between animals in net profitability per cow joined in a typical commercial self replacing herd using Angus bulls. This selection index is not specific to a particular market end-point, but identifies animals that will improve overall net profitability in the majority of commercial, self replacing, grass and grain finishing beef production systems.	Higher selection indexes indicate greater profitability.
	\$A-L	\$	Genetic differences between animals in net profitability per cow joined in a typical commercial self replacing herd using Angus bulls. This selection index is not specific to a particular market end-point, but identifies animals that will improve overall net profitability in the majority of commercial, self replacing, grass and grain finishing beef production systems.  The \$A-L index is similar to the \$A index but is modelled on a production system where feed is surplus to requirements for the majority of the year, or the cost of supplying additional feed when animal feed requirements increase is low. While the \$A aims to maintain mature cow weight, the \$A-L does not aim to limit the increase in mature cow weight as there is minimal cost incurred if the feed maintenance requirements of the female breeding herd increase as a result of selection decisions.	Higher selection indexes indicate greater profitability.

## UNDERSTANDING ESTIMATED BREEDING VALUES (EBVS)

Selection Indexes	\$D	\$	Genetic differences between animals in net profitability per cow joined in a commercial self replacing herd targeting the domestic supermarket trade. Steers are either finished using pasture, pasture supplemented by grain, or grain (e.g. 50 -70 days) with steers assumed to be slaughtered at 510kg live weight (280kg carcass weight with 12mm P8 fat depth) at 16 months of age.	Higher selection indexes indicate greater profitability.
	\$D-L	\$	Genetic differences between animals in net profitability per cow joined in a commercial self replacing herd targeting the domestic supermarket trade. Steers are either finished using pasture, pasture supplemented by grain, or grain (e.g. 50 -70 days) with steers assumed to be slaughtered at 510kg live weight (280kg carcass weight with 12mm P8 fat depth) at 16 months of age.  The \$D-L index is similar to the \$D index but is modelled on a production system where feed is surplus to requirements for the majority of the year, or the cost of supplying additional feed when animal feed requirements increase is low.  While the \$D aims to maintain mature cow weight, the \$D-L does not aim to limit the increase in mature cow weight as there is minimal cost incurred if the feed maintenance requirements of the female breeding herd increase as a result of selection decisions.	Higher selection indexes indicate greater profitability.
	\$GN	\$	Genetic differences between animals in net profitability per cow joined in a commercial self replacing herd targeting pasture grown steers with a 250 day feedlot finishing period for the grain fed high quality, highly marbled markets. Steers are assumed to be slaughtered at 800 kg live weight (455 kg carcass weight with 30 mm P8 fat depth) at 24 months of age, with a significant premium for steers that exhibit superior marbling.	Higher selection indexes indicate greater profitability.
	\$GN-L	\$	Genetic differences between animals in net profitability per cow joined in a commercial self replacing herd targeting pasture grown steers with a 250 day feedlot finishing period for the grain fed high quality, highly marbled markets. Steers are assumed to be slaughtered at 800 kg live weight (455 kg carcass weight with 30 mm P8 fat depth) at 24 months of age, with a significant premium for steers that exhibit superior marbling.  The \$GN-L index is similar to the \$GN index but is modelled on a production system where feed is surplus to requirements for the majority of the year, or the cost of supplying additional feed when animal feed requirements increase is low.  While the \$GN aims to maintain mature cow weight, the \$GN-L does not aim to limit the increase in mature cow weight as there is minimal cost incurred if the feed maintenance requirements of the female breeding herd increase as a result of selection decisions.	Higher selection indexes indicate greater profitability.
	\$GS	\$	Genetic differences between animals in net profitability per cow joined in a commercial self replacing herd targeting pasture finished steers. Steers are assumed to be slaughtered at 650 kg live weight (350 kg carcass weight with 12 mm P8 fat depth) at 22 months of age. Emphasis has been placed on eating quality and tenderness to favour animals that are suited to MSA requirements.	Higher selection indexes indicate greater profitability.
	\$GS-L	\$	Genetic differences between animals in net profitability per cow joined in a commercial self replacing herd targeting pasture finished steers. Steers are assumed to be slaughtered at 650 kg live weight (350 kg carcass weight with 12 mm P8 fat depth) at 22 months of age. Emphasis has been placed on eating quality and tenderness to favour animals that are suited to MSA requirements.  The \$GS-L index is similar to the \$GS index but is modelled on a production system where feed is surplus to requirements for the majority of the year, or the cost of supplying additional feed when animal feed requirements increase is low.  While the \$GS aims to maintain mature cow weight, the \$GS-L does not aim to limit the increase in mature cow weight as there is minimal cost incurred if the feed maintenance requirements of the female breeding herd increase as a result of selection decisions.	Higher selection indexes indicate greater profitability.
	\$PRO	\$	Genetic differences between animals in net profitability per cow joined in a commercial self replacing herd based in New Zealand that targets the production of grass finished steers for the AngusPure programme. Steers are assumed marketed at approximately 530 kg live weight (290 kg carcass weight with 10 mm P8 fat depth) at 20 months of age, with a significant premium for steers that exhibit superior marbling.	Higher selection indexes indicate greater profitability.
	\$T	\$	Genetic difference between animals in net profitability per cow joined in a situation where Angus bulls are being used as a terminal sire over mature breeding females and all progeny, both male and female, are slaughtered. The Angus Terminal Sire Index focusses on increasing growth, carcass yield and eating quality. Daughters are not retained for breeding and therefore no emphasis is given to female fertility or maternal traits.	Higher selection indexes indicate greater profitability.







# Understanding Genomics

Genomics is a term used to describe the analysis of the function and structure of a genome, being the complete set of DNA within a single cell or organism.

Within the beef industry, genomics is still an ever expanding technology, with a range of potential applications available within a beef enterprise, plus many more under development.

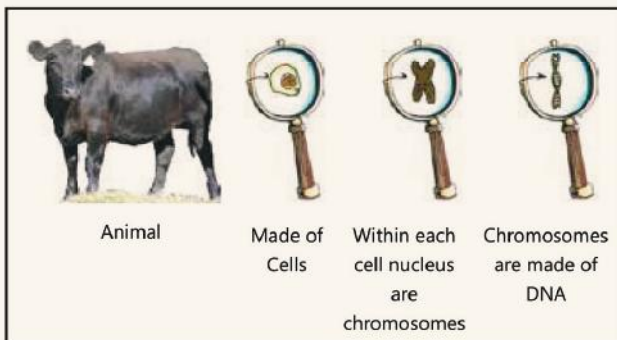
Some of the most common current applications of genomic technology include:

- Parentage Verification
- Management of Genetic Conditions
- Change in Qualitative Traits (e.g. coat colour/polledness)
- Genetic Improvement in Production Traits
- Assessment of Breed Composition

### What is DNA?

Deoxyribonucleic acid (DNA) is an exceptionally important molecule found in the nucleus of all bovine cells. It is often described as the 'blueprint' of an organism because it codes the instructions for how that organism will develop, function and appear.

In plants and animals, DNA is bundled into chromosomes. Beef cattle have 30 chromosome pairs, each pair including one chromosome inherited from the sire and one from the dam. Because the progeny inherit chromosomes from both parents, the DNA 'blueprint' is passed on from one generation to the next.

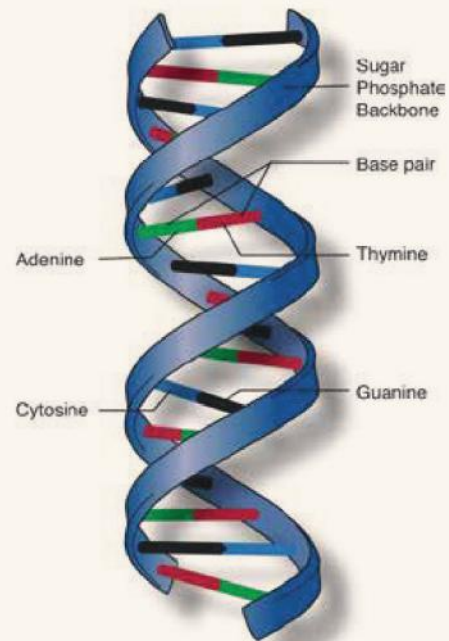


### DNA Structure

DNA looks like a long twisted ladder, or double helix. The sides of the ladder are made up of alternating sugar and phosphate molecules. The rungs connect to the sugar molecules and are known as nitrogenous bases. It is the bases which provide the key functionality of DNA and exhibit variation between individuals.

There are approximately 3 billion base pairs in bovine DNA, with four different bases, Adenine (A), Thymine (T),

Guanine (G) and Cytosine (C). Each rung of DNA is made up of two bases linked together, either G to C or T to A. The sequences of these base pairs make up the 'message' of DNA, and differences in sequences provide the basis for variation between individuals.



### What is a Gene?

A gene is a base pair sequence at a particular location on the chromosome which codes for a specific product. It is estimated there are between 22,000 and 28,000 genes in the beef animals. Genes are separated on chromosomes by areas of 'non-coding DNA' for which no function has been identified, but still make up part of the animal's genotype.

### What is an Allele?

For each gene there may be 2 or more variations, known as alleles, which can result in different phenotypes or observable characteristics. For example one of the genes influencing coat colour has three alleles, the "e" allele for red coat colour, the ED allele for black coat colour and a "Wild type" E+ allele. Which alleles the animal has, and how those alleles interact with each other determines the coat colour of the animal.

### What is a Gene Marker (or DNA Marker)?

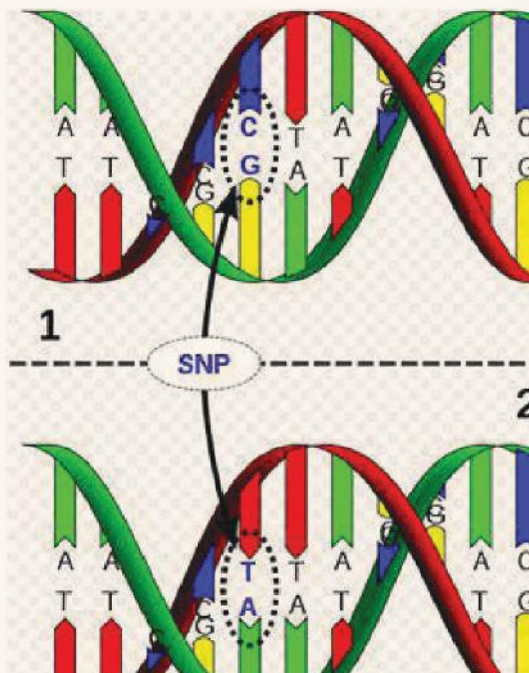
A gene or DNA marker is a known, heritable base pair sequence which is associated with a particular gene. The DNA marker sequence does not necessarily have to be part of the gene that codes for the trait but only associated with it, therefore the value of the genetic marker will vary.

There are several types of DNA markers, but those most commonly being used in the beef industry are SNPs (pronounced "snips"), microsatellites and Indels.

**What is a SNP?**

Single Nucleotide Polymorphisms (SNPs) are markers where there is a difference in a single base pair. For example, in the figure below, the top animal has a "C & G" base pair at the particular location in the DNA, whereas the bottom animal has a "T & A" base pair.

While early DNA technology only evaluated an animal's DNA for a relatively small number of SNPs, SNP chips now routinely evaluate animals at many thousands of individual SNPs. For example, DNA chips with 7,000 (i.e. 7K), 50,000 (i.e. 50K) or 800,000 (i.e. 800K) SNPs on them are now available.



**What is a Microsatellite?**

A microsatellite is a repeat of a particular base pair sequence at a specific location in an animal's DNA, for example CACACACA. The number of base pair repeats differs between animals. Microsatellites form the basis for traditional DNA parent verification, which use multiple microsatellites to determine a calves' parentage through the exclusion of possible candidates which do not have the same microsatellites.

■ CACACACACACACACA ■  
 ■ GTGTGTGTGTGTGTGT ■

**Key Terms**

**Trait** – Attribute or characteristic of animals that can be measured and improved genetically (for example, growth rate, fertility, carcass or meat quality)

**Genotype** – the full genetic makeup of an animal including dominant and recessive alleles that may not be expressed

**Phenotype** – the observable characteristics or traits of an animal that result from the interaction between the animal's genotype and the environment

**Locus** – the specific location of a gene or DNA sequence on a chromosome

**Allele** – one form of a gene or a genetic locus

**Homozygous** – animal carries identical alleles for a gene

**Heterozygous** – animal carries different alleles for a gene

**Dominant** – an allele is dominant over another so that the phenotype of the dominant allele is always expressed over the recessive allele

**Recessive** – an allele is recessive, so that the phenotype is only expressed when two copies of the allele are present (i.e. it is homozygous).

**Carrier** – animal which is heterozygous and 'carries' a recessive allele which is not being expressed phenotypically

**What is an Indel?**

An Indel is an insertion or deletion of a particular base pair sequence at a specific location in an animal's DNA. Indels are often associated with recessive genetic conditions.

**What is a Genomic Prediction Equation?**

As each production trait is influenced by many genes, inferring genetic merit for a particular trait requires the accumulated effects of many markers. Genomic Prediction Equations take the genotype of an animal as collected using dense SNP chips (e.g. 50,000 SNPs), to estimate the animal's breeding value based on the known effect of each SNP on the trait of interest.

For further information, please contact staff at:

Angus Australia  
 Phone: 02 6773 4600  
 Email: office@angusaustralia.com.au  
 Website: www.angusaustralia.com.au



**RS G A R HOME TOWN<sup>PV</sup> USA19266718**

Date of Birth: 6/9/2018 Register: HBR AMF,CAF,DDF,NHF,DWF,MAF,MHF,OHF,OSF,RGF

G A R EARLY BIRD<sup>F</sup> G A R SURE FIRE<sup>SV</sup>  
**SIRE: USA18217198 G A R ASHLAND<sup>PV</sup>** **DAM: USA18644754 CHAIR ROCK SURE FIRE 6095<sup>F</sup>**  
 CHAIR ROCK AMBUSH 1018<sup>F</sup> CHAIR ROCK PROGRESS 3005<sup>F</sup>

TACE	Mid February 2024 TransTasman Angus Cattle Evaluation																				Select. Index			
	CEDir	CEDtrs	GL	BW	200	400	600	MCW	Milk	SS	DTC	CWT	EMA	Rib	P8	RBY	IMF	NFI-F	DOC	Claw	Angle	Leg	SA	SA-L
EBVs	+4.9	+1.4	-6.0	+2.4	+57	+101	+115	+72	+12	+1.1	-6.7	+74	+14.4	-2.5	-4.6	+1.1	+5.3	+0.33	+25	+1.24	+0.92	+0.84	\$301	\$446
Acc	88%	78%	99%	99%	98%	98%	93%	89%	98%	58%	90%	91%	89%	88%	84%	91%	74%	97%	99%	99%	92%			

Statistics: Number of Herds: 53, Prog Analysed: 2188, Genomic Prog: 938 Traits Observed: Genomics

**RS G A R TRANSCENDENT<sup>PV</sup> USA19570738**

Date of Birth: 9/8/2019 Register: HBR AMF,CAF,DDF,NHF,DWF,MAF,MHF,OHF,OSF,RGF

G A R PROGRESS<sup>SV</sup> G A R PROPHET<sup>SV</sup>  
**SIRE: USA17354145 G A R MOMENTUM<sup>PV</sup>** **DAM: USA18333228 G A R PROPHET 2685<sup>F</sup>**  
 G A R BIG EYE 1770<sup>F</sup> G A R DAYBREAK 2842<sup>F</sup>

TACE	Mid February 2024 TransTasman Angus Cattle Evaluation																				Select. Index			
	CEDir	CEDtrs	GL	BW	200	400	600	MCW	Milk	SS	DTC	CWT	EMA	Rib	P8	RBY	IMF	NFI-F	DOC	Claw	Angle	Leg	SA	SA-L
EBVs	+1.0	+4.4	-6.0	+3.2	+56	+99	+127	+108	+16	-0.6	-4.1	+71	+11.5	-1.8	-3.6	-0.3	+7.8	+0.87	+18	+1.08	+0.88	+0.88	\$249	\$401
Acc	77%	66%	98%	97%	93%	94%	91%	88%	84%	90%	56%	86%	84%	82%	79%	87%	70%	79%	90%	90%	74%			

Statistics: Number of Herds: 11, Prog Analysed: 231, Genomic Prog: 62 Traits Observed: Genomics

**RS HAZELDEAN M584<sup>PV</sup> NHZM584**

Date of Birth: 11/8/2016 Register: HBR AMF,CAF,DDF,NHF

ARDROSSAN EQUATOR A241<sup>PV</sup> TE MANIA BERKLEY B1<sup>PV</sup>  
**SIRE: SRKJ310 BOWMONT JACKPOT J310<sup>PV</sup>** **DAM: NHZG38 HAZELDEAN G38<sup>SV</sup>**  
 ARDROSSAN WILCOOLA Z31<sup>PV</sup> HAZELDEAN A90<sup>SV</sup>

TACE	Mid February 2024 TransTasman Angus Cattle Evaluation																				Select. Index			
	CEDir	CEDtrs	GL	BW	200	400	600	MCW	Milk	SS	DTC	CWT	EMA	Rib	P8	RBY	IMF	NFI-F	DOC	Claw	Angle	Leg	SA	SA-L
EBVs	+5.8	+8.8	-2.6	+2.9	+55	+97	+127	+107	+17	+2.8	-7.0	+78	+7.1	-0.8	-1.3	+1.0	+1.2	-0.08	+26	+0.38	+0.84	+0.98	\$242	\$417
Acc	76%	65%	89%	95%	93%	92%	90%	88%	82%	89%	56%	81%	81%	82%	82%	76%	82%	68%	84%	79%	79%	75%		

Statistics: Number of Herds: 2, Prog Analysed: 117, Genomic Prog: 105 Traits Observed: CE,BWT,200WT,400WT,600WT,SC,Scan(EMA,Rib,Rump,IMF), DOC,Structure(Claw Set x 1, Foot Angle x 1),Genomics

**RS TEXAS POWERPLAY P613<sup>PV</sup> DXTP613**

Date of Birth: 6/7/2018 Register: HBR AMF,CAF,DDF,NHF,DWF,MAF,MHF,OHF,OSF,RGF

AYRVALE BARTEL E7<sup>PV</sup> BANGADANG WESTERN EXPRESS E10<sup>SV</sup>  
**SIRE: HIOH9 AYRVALE HERCULES H9<sup>PV</sup>** **DAM: DXTH647 TEXAS UNDINE H647<sup>SV</sup>**  
 LAWSONS INVINCIBLE F338<sup>SV</sup> TEXAS UNDINE Z183<sup>PV</sup>

TACE	Mid February 2024 TransTasman Angus Cattle Evaluation																				Select. Index			
	CEDir	CEDtrs	GL	BW	200	400	600	MCW	Milk	SS	DTC	CWT	EMA	Rib	P8	RBY	IMF	NFI-F	DOC	Claw	Angle	Leg	SA	SA-L
EBVs	+8.2	+9.4	-6.4	-0.1	+43	+85	+120	+85	+16	+0.3	-3.8	+81	+7.5	+3.0	+5.3	-0.2	+2.7	+0.50	+22	+1.20	+1.02	+0.84	\$221	\$373
Acc	79%	67%	98%	98%	96%	96%	94%	88%	80%	94%	56%	82%	84%	83%	84%	79%	84%	70%	92%	84%	84%	80%		

Statistics: Number of Herds: 37, Prog Analysed: 522, Genomic Prog: 287 Traits Observed: BWT,200WT,400WT,600WT,SC,Scan(EMA,Rib,Rump,IMF), DOC,Genomics

**RS LAWSONS ROCKY R4010<sup>PV</sup> VLYR4010**

Date of Birth: 23/8/2020 Register: HBR AMF,CAF,DDF,NHF,DWF,MAF,MHF,OHF,OSF,RGF

G A R PROGRESS<sup>SV</sup> PARINGA JUDD J5<sup>PV</sup>  
**SIRE: USA17354145 G A R MOMENTUM<sup>PV</sup>** **DAM: VLYP4005 LAWSONS JUDD P4005<sup>SV</sup>**  
 G A R BIG EYE 1770<sup>F</sup> LAWSONS PROPHET M4047<sup>F</sup>

TACE	Mid February 2024 TransTasman Angus Cattle Evaluation																				Select. Index			
	CEDir	CEDtrs	GL	BW	200	400	600	MCW	Milk	SS	DTC	CWT	EMA	Rib	P8	RBY	IMF	NFI-F	DOC	Claw	Angle	Leg	SA	SA-L
EBVs	+6.3	+5.8	-4.6	+2.6	+53	+92	+120	+92	+22	+2.4	-4.4	+70	+11.5	+2.0	+1.6	+0.2	+4.7	+1.35	+24	+0.90	+1.04	+1.00	\$254	\$409
Acc	80%	66%	99%	98%	97%	97%	93%	88%	79%	95%	56%	82%	84%	83%	83%	78%	84%	70%	97%	90%	90%	88%		

Statistics: Number of Herds: 49, Prog Analysed: 1261, Genomic Prog: 472 Traits Observed: CE,BWT,200WT(x2),400WT,SC,Scan(EMA,Rib,Rump,IMF), Genomics

Top 10% Top 20%

**RS KELLY ANGUS QUINN Q209<sup>SV</sup> GXNQ209**

Date of Birth: 26/7/2019 Register: HBR AMF,CAF,DDF,NHF,DWF,MAF,MHF,OHF,OSF,RGF

CONNEALY BLACK GRANITE\* G A R PROPHET<sup>SV</sup>  
**SIRE: USA18463791 QHF WWA BLACK ONYX 5Q11<sup>SV</sup>** **DAM: VLYL1327 LAWSONS PROPHET L1327<sup>#</sup>**  
 WILKS BLACKCAP 0D82\* LAWSONS BARTEL E7 J1127<sup>#</sup>

TACE	Mid February 2024 TransTasman Angus Cattle Evaluation																				Select. Index			
	CEDir	CEDtrs	GL	BW	200	400	600	MCW	Milk	SS	DTC	CWT	EMA	Rib	P8	RBY	IMF	NFI-F	DOC	Claw	Angle	Leg	SA	SA-L
EBVs	+7.9	+9.7	-6.7	+1.8	+64	+114	+142	+115	+26	+0.6	-8.8	+89	+7.0	-1.3	-2.9	+0.5	+2.6	-0.05	+27	+1.30	+1.26	+1.26	\$294	\$491
Acc	74%	59%	95%	94%	90%	90%	87%	84%	77%	81%	47%	77%	77%	78%	78%	72%	79%	63%	78%	73%	73%	68%		

Statistics: Number of Herds: 10, Prog Analysed: 96, Genomic Prog: 56 Traits Observed: GL,BWT,200WT,400WT,600WT,SC,Scan(EMA,Rib,Rump,IMF), DOC,Genomics

**RS KNOWLA NOBLEMAN N127<sup>SV</sup> BLAN127**

Date of Birth: 18/8/2017 Register: HBR AMFU,CAFU,DDFU,NHFU

MILWILLAH GATSBY G279<sup>PV</sup> MATAURI REALITY 839<sup>#</sup>  
**SIRE: SRKK306 BOWMONT KING K306<sup>PV</sup>** **DAM: BLAK49 KNOWLA LOWAN K49<sup>#</sup>**  
 LANDFALL FEARLESS D58<sup>SV</sup> KNOWLA LOWAN H59<sup>SV</sup>

TACE	Mid February 2024 TransTasman Angus Cattle Evaluation																				Select. Index			
	CEDir	CEDtrs	GL	BW	200	400	600	MCW	Milk	SS	DTC	CWT	EMA	Rib	P8	RBY	IMF	NFI-F	DOC	Claw	Angle	Leg	SA	SA-L
EBVs	+8.8	+1.5	-10.8	+1.4	+52	+97	+127	+110	+9	+1.5	-4.0	+71	+13.3	+1.1	+0.7	+1.1	+3.8	-0.17	+43	+0.66	+1.08	+1.00	\$250	\$416
Acc	77%	66%	97%	97%	96%	96%	95%	89%	82%	94%	54%	83%	84%	83%	83%	78%	84%	70%	93%	92%	92%	88%		

Statistics: Number of Herds: 29, Prog Analysed: 343, Genomic Prog: 248 Traits Observed: CE,BWT,200WT,400WT,600WT(x2),SC,Scan(EMA,Rib,Rump,IMF), DOC,Genomics

**RS KELLY ANGUS RINGLEADER R232<sup>SV</sup> GXNR232**

Date of Birth: 10/7/2020 Register: HBR AMF,CAF,DDF,NHF,DWF,MAF,MHF,OHF,OSF,RGF

G A R SURE FIRE<sup>SV</sup> G A R PROPHET<sup>SV</sup>  
**SIRE: USA18746402 RES DARK FIRE E612<sup>SV</sup>** **DAM: VLYK1417 LAWSONS PROPHET K1417<sup>#</sup>**  
 RES ELELA 193 587 466\* LAWSONS TANK E468<sup>#</sup>

TACE	Mid February 2024 TransTasman Angus Cattle Evaluation																				Select. Index			
	CEDir	CEDtrs	GL	BW	200	400	600	MCW	Milk	SS	DTC	CWT	EMA	Rib	P8	RBY	IMF	NFI-F	DOC	Claw	Angle	Leg	SA	SA-L
EBVs	+5.5	+6.5	-9.5	+1.6	+60	+106	+137	+109	+24	+1.1	-8.0	+85	+6.6	+0.6	-0.4	-0.8	+5.4	+0.38	+16	+0.96	+1.00	+0.88	\$280	\$461
Acc	70%	57%	90%	90%	86%	85%	84%	81%	74%	79%	46%	75%	75%	76%	76%	69%	78%	63%	74%	78%	78%	70%		

Statistics: Number of Herds: 2, Prog Analysed: 31, Genomic Prog: 26 Traits Observed: GL,BWT,200WT,400WT,SC,Scan(EMA,Rib,Rump,IMF),Genomics

**RS KELLY ANGUS DARK FIRE R230<sup>SV</sup> GXNR230**

Date of Birth: 10/7/2020 Register: HBR AMFU,CAFU,DDFU,NHFU

G A R SURE FIRE<sup>SV</sup> G A R PROPHET<sup>SV</sup>  
**SIRE: USA18746402 RES DARK FIRE E612<sup>SV</sup>** **DAM: GXNM64 KELLY ANGUS PROPHET M64<sup>#</sup>**  
 RES ELELA 193 587 466\* LAWSONS TANK B1155 G229<sup>#</sup>

TACE	Mid February 2024 TransTasman Angus Cattle Evaluation																				Select. Index			
	CEDir	CEDtrs	GL	BW	200	400	600	MCW	Milk	SS	DTC	CWT	EMA	Rib	P8	RBY	IMF	NFI-F	DOC	Claw	Angle	Leg	SA	SA-L
EBVs	-4.9	+1.2	-4.9	+5.5	+74	+124	+153	+136	+19	+1.8	-3.0	+93	+4.6	-1.1	-1.9	+0.0	+2.4	-0.69	+18	+1.06	+0.72	+0.72	\$222	\$379
Acc	69%	58%	84%	86%	85%	84%	83%	80%	75%	80%	47%	74%	74%	75%	75%	68%	78%	65%	75%	70%	70%	61%		

Statistics: Number of Herds: 1, Prog Analysed: 8, Genomic Prog: 8 Traits Observed: GL,BWT,200WT,400WT,SC,Scan(EMA,Rib,Rump,IMF),Genomics

**RS KELLY ANGUS TRAILBLAZER R233<sup>PV</sup> GXNR233**

Date of Birth: 11/7/2020 Register: APR AMFU,CAFU,DDF,NHFU

V A R DISCOVERY 2240<sup>PV</sup> LAWSONS SURE FIRE L1187<sup>SV</sup>  
**SIRE: USA18996007 FERGUSON TRAILBLAZER 239E<sup>SV</sup>** **DAM: GXNN134 KELLY ANGUS SF L1187 N134<sup>SV</sup>**  
 MOLITOR999 BARBELLA 940-3012\* LAWSONS BARTEL E7 K1474<sup>#</sup>

TACE	Mid February 2024 TransTasman Angus Cattle Evaluation																				Select. Index			
	CEDir	CEDtrs	GL	BW	200	400	600	MCW	Milk	SS	DTC	CWT	EMA	Rib	P8	RBY	IMF	NFI-F	DOC	Claw	Angle	Leg	SA	SA-L
EBVs	+4.0	+9.3	-2.1	+2.0	+48	+91	+122	+91	+23	+2.6	-7.1	+64	+7.9	+3.6	+3.4	-0.3	+4.0	+0.47	+20	+0.90	+1.04	+0.98	\$253	\$416
Acc	67%	55%	83%	84%	84%	82%	82%	79%	74%	79%	43%	72%	72%	72%	72%	64%	76%	61%	75%	68%	68%	61%		

Statistics: Number of Herds: 1, Prog Analysed: 3, Genomic Prog: 3 Traits Observed: GL,BWT,200WT,400WT,SC,Scan(EMA,Rib,Rump,IMF),Genomics

Top 10% Top 20%

**RS** **KELLY ANGUS KODAK R277<sup>PV</sup>** **GXNR277**

Date of Birth: 17/7/2020 Register: APR AMFU,CAFU,DDFU,NHFU  
 RENNYLEA KODAK K522<sup>SV</sup> G A R METHOD<sup>SV</sup>  
**SIRE: GXNP210 KELLY ANGUS KODAK P210<sup>PV</sup>** **DAM: GXNN49 KELLY ANGUS METHOD N49<sup>SV</sup>**  
 LAWSONS AMBASSADOR J1246<sup>SV</sup> LAWSONS BARTEL E7 K1571<sup>#</sup>

TACE	Mid February 2024 TransTasman Angus Cattle Evaluation																					Select. Index		
	CEDir	CEDtrs	GL	BW	200	400	600	MCW	Milk	SS	DTC	CWT	EMA	Rib	P8	RBV	IMF	NFI-F	DOC	Claw	Angle	Leg	\$A	\$A-L
EBVs	+1.2	-3.8	-1.2	+3.8	+58	+98	+127	+107	+15	+3.3	-3.1	+63	+11.4	-1.3	-4.1	+1.4	+3.0	-0.41	+14	+0.72	+0.70	+0.88	\$217	\$356
Acc	69%	57%	83%	87%	85%	84%	84%	81%	74%	80%	45%	74%	74%	74%	75%	67%	78%	64%	76%	68%	69%	65%		

Statistics: Number of Herds: 1, Prog Analysed: 10, Genomic Prog: 11 Traits Observed: GL,BWT,200WT,400WT,SC,Scan(EMA,Rib,Rump,IMF),Genomics

**RS** **KELLY ANGUS KODAK R278<sup>SV</sup>** **GXNR278**

Date of Birth: 16/7/2020 Register: HBR AMFU,CAFU,DDFU,NHFU  
 RENNYLEA KODAK K522<sup>SV</sup> LAWSONS KI AFRICA J6041<sup>PV</sup>  
**SIRE: GXNP210 KELLY ANGUS KODAK P210<sup>PV</sup>** **DAM: GXNN128 KELLY ANGUS KI J6041 N128<sup>#</sup>**  
 LAWSONS AMBASSADOR J1246<sup>SV</sup> LAWSONS INVINCIBLE G8144<sup>#</sup>

TACE	Mid February 2024 TransTasman Angus Cattle Evaluation																					Select. Index		
	CEDir	CEDtrs	GL	BW	200	400	600	MCW	Milk	SS	DTC	CWT	EMA	Rib	P8	RBV	IMF	NFI-F	DOC	Claw	Angle	Leg	\$A	\$A-L
EBVs	+2.3	+3.0	-2.1	+1.4	+47	+92	+122	+107	+21	+3.6	-4.4	+62	+7.9	-2.8	-4.1	+0.9	+6.0	+0.07	+14	+0.70	+0.84	+1.02	\$222	\$374
Acc	64%	53%	82%	82%	83%	82%	81%	78%	72%	78%	42%	71%	71%	71%	72%	63%	75%	61%	73%	66%	66%	64%		

Statistics: Number of Herds: 1, Prog Analysed: 5, Genomic Prog: 5 Traits Observed: GL,BWT,200WT,400WT,SC,Scan(EMA,Rib,Rump,IMF),Genomics

Top 10% Top 20%





LOT 2  
KELLY ANGUS T661sv



LOT 3  
KELLY ANGUS T707pv



LOT 4  
KELLY ANGUS T652sv



LOT 5  
KELLY ANGUS T655sv



LOT 6  
KELLY ANGUS T685pv



LOT 8  
KELLY ANGUS T647pv



### Kelly Angus Bull Sale 2024

Animal Ident	Calving Ease				Growth				Fertility				Carcase				Feed				Structural			Selection Indexes	
	CEDir	CEDirs	GL	BWT	200	400	600	MCW	Milk	SS	DTC	CWT	EMA	RIB	P8	RBV	IMF	NFI-F	Doc	Claw	Angle	Leg	SA	SA-L	
1	GXN22T645	+3.7	+7.7	-7.5	+2.1	+40	+86	+115	+80	+19	-0.2	-1.7	+81	+12.7	+1.2	+0.8	+2.6	+1.45	+19	+1.24	+1.08	+0.96	\$201	\$330	
2	GXN22T661	-5.1	+1.7	-7.6	+3.7	+49	+85	+123	+87	+18	+1.1	-3.5	+75	+7.9	-1.1	+0.3	+2.4	-0.56	+12	+0.80	+0.76	+1.02	\$176	\$284	
3	GXN22T707	+0.3	+5.6	-0.5	+3.1	+49	+101	+130	+93	+21	+0.3	-4.1	+86	+4.3	+0.0	+1.2	+2.4	+0.30	+19	+0.88	+1.00	+1.02	\$214	\$355	
4	GXN22T652	+6.1	+6.9	-10.7	+1.1	+48	+81	+117	+84	+16	-0.9	-5.8	+83	+6.1	+1.0	+1.1	+0.1	+0.47	+21	+0.84	+1.04	+0.76	\$223	\$368	
5	GXN22T655	-1.8	+3.5	-5.5	+5.4	+64	+108	+142	+125	+20	+1.3	-4.5	+89	+7.9	+0.5	+2.6	-0.1	+0.20	+22	+1.08	+0.96	+0.98	\$235	\$397	
6	GXN22T685	+3.2	+5.3	-2.1	+3.5	+56	+99	+123	+105	+19	+1.8	-5.0	+64	+4.3	+2.8	+3.1	+0.0	+0.34	+20	+1.04	+1.28	+1.06	\$232	\$391	
7	GXN22T677	+1.7	+2.5	-2.3	+5.1	+56	+101	+135	+113	+21	+4.0	-3.6	+85	+9.4	-1.4	-2.2	+0.4	+1.10	+17	+0.80	+0.96	+1.02	\$228	\$383	
8	GXN22T647	+5.4	+2.7	-5.1	+3.2	+53	+94	+125	+100	+18	+0.5	-4.2	+75	+14.3	-1.8	-3.0	+0.9	+0.51	+1	+1.08	+0.92	+0.96	\$252	\$403	
9	GXN22T638	+4.5	+1.9	-6.1	+3.8	+59	+110	+155	+137	+26	+1.9	-4.4	+86	+8.4	-3.2	-4.4	+0.3	+0.93	+25	+1.02	+1.00	+1.00	\$240	\$419	
10	GXN22T695	+7.0	+5.7	-9.0	+0.9	+48	+92	+117	+86	+27	+1.5	-8.1	+81	+8.8	-0.6	-2.5	+0.5	+0.56	+12	+1.08	+0.96	+0.90	\$264	\$427	
11	GXN22T701	+2.8	+8.8	-8.5	+2.8	+64	+109	+135	+98	+22	+0.9	-6.7	+91	+7.0	-1.3	-0.9	-0.1	-0.14	+16	+0.60	+0.92	+0.90	\$279	\$445	
12	GXN22T691	-5.8	+2.4	-10.2	+7.0	+67	+122	+167	+156	+20	+2.3	-5.7	+94	+9.2	-3.7	-4.0	+0.2	+0.24	+9	+0.96	+1.26	+0.98	\$247	\$427	
13	GXN22T626	+9.5	+8.6	-12.1	+0.4	+48	+92	+129	+104	+23	+3.2	-6.3	+74	+13.2	+0.6	-0.9	+1.0	+0.45	+29	+0.88	+1.06	+1.14	\$266	\$443	
14	GXN22T656	+9.6	+4.9	-7.6	+0.1	+38	+75	+102	+65	+18	+1.9	-6.4	+51	+6.5	+2.0	+1.9	-0.2	+0.73	+23	+0.66	+1.08	+1.06	\$237	\$375	
15	GXN22T667	+2.4	-0.4	-5.1	+4.6	+56	+96	+122	+90	+15	+1.4	-5.5	+75	+11.4	-2.3	-3.4	+0.6	+0.14	+30	+1.02	+0.86	+0.76	\$262	\$403	
16	GXN22T667	+6.9	+1.8	-3.0	+2.7	+53	+82	+100	+48	+16	+1.8	-6.3	+77	+13.8	-0.5	-2.6	+1.2	+0.06	+30	+0.96	+0.82	+0.98	\$283	\$405	
17	GXN22T635	+6.3	+5.7	-5.6	+0.8	+49	+87	+95	+79	+14	+0.4	-6.7	+65	+8.0	+0.7	-0.6	+0.7	+0.23	+27	+1.24	+0.90	+0.82	\$259	\$410	
18	GXN22T640	+5.6	+0.9	-8.4	+3.2	+51	+85	+103	+84	+15	+1.0	-8.0	+60	+7.7	-2.1	-4.5	+0.4	+0.39	+5	+0.86	+0.74	+1.06	\$235	\$380	
19	GXN22T658	+1.6	+6.6	-4.0	+2.8	+47	+91	+120	+100	+14	+0.3	-3.9	+81	+2.6	+0.7	+1.6	+0.2	+0.39	+16	+1.10	+1.04	+1.12	\$196	\$340	
20	GXN22T681	+9.2	+9.0	-7.9	+0.0	+40	+80	+108	+88	+17	+0.9	-6.8	+64	+1.0	+1.7	+1.3	-0.6	+4.0	+0.76	+1.18	+1.06	+1.02	\$206	\$365	
21	GXN22T679	-3.2	-0.9	-3.0	+3.6	+46	+80	+106	+85	+14	+1.8	-2.7	+68	+8.3	-1.7	-1.8	+1.0	-0.06	-6	+0.96	+0.92	+0.90	\$174	\$280	
22	GXN22T639	+7.9	+3.2	-4.7	+3.1	+48	+76	+109	+79	+14	+1.1	-3.5	+52	+4.5	-1.6	-0.6	+0.5	+1.9	-0.12	+9	+0.68	+0.94	\$190	\$317	
23	GXN22T686	+8.0	+8.3	-9.8	+0.3	+44	+86	+121	+110	+14	+0.3	-4.2	+74	+10.2	+0.8	+0.5	+0.6	+0.92	+23	+1.00	+0.92	+0.72	\$211	\$378	
24	GXN22T710	+5.7	+5.6	-4.9	+2.2	+51	+89	+118	+94	+10	+1.6	-4.1	+69	+11.9	-1.2	-0.5	+0.6	+0.13	+26	+1.08	+1.04	+0.90	\$220	\$371	
25	GXN22T669	+4.4	-0.5	-4.8	+2.0	+54	+96	+113	+78	+23	+1.5	-5.4	+69	+13.1	-2.7	-4.2	+1.4	+3.6	-0.18	+23	+1.06	+0.88	\$260	\$396	
26	GXN22T721	+8.7	+9.2	-7.4	+0.5	+54	+97	+134	+118	+26	+3.3	-8.2	+79	+4.5	-1.8	-3.8	-0.4	+5.3	-0.35	+22	+1.08	+1.16	\$245	\$435	
27	GXN22T735	+10.0	+11.1	-3.1	+0.2	+52	+91	+113	+88	+26	+1.0	-6.9	+76	+5.2	-0.8	-2.0	+0.5	+2.2	-0.04	+10	+0.98	+1.00	\$262	\$406	
28	GXN22T732	+5.9	+3.1	-4.0	+2.3	+57	+101	+125	+78	+29	+1.0	-8.7	+86	+8.4	-0.1	-0.6	+1.1	+1.2	-0.26	+18	+1.08	+1.12	\$287	\$443	
29	GXN22T682	+7.7	+7.7	-8.7	+2.3	+48	+80	+105	+56	+19	+3.5	-5.8	+63	+11.3	+1.6	+1.6	+0.9	+0.36	+30	+0.72	+1.08	+1.08	\$258	\$393	
30	GXN22T698	+8.3	+9.2	-0.8	-0.1	+47	+88	+109	+101	+11	+1.1	-6.5	+59	+1.0	+2.4	+1.9	-0.4	+3.2	-0.37	+15	+0.86	+0.96	\$215	\$387	
CEDir	CEDirs	GL	BWT	200	400	600	MCW	Milk	SS	DTC	CWT	EMA	RIB	P8	RBV	IMF	NFI-F	Doc	Claw	Angle	Leg	SA	SA-L		
+1.8	+2.8	-4.4	+4.0	+51	+92	+118	+101	+17	+2.2	-4.6	+67	+6.6	+0.0	-0.3	+0.5	+2.3	+0.23	+21	+0.85	+0.97	+1.03	\$202	+345		





### Kelly Angus Bull Sale 2024

Animal Ident	Calving Ease				Growth				Fertility				Carcase				Feed				Structural			Selection Indexes	
	CEDir	CEDirs	GL	BWT	200	400	600	MCW	Milk	SS	DTC	CWT	EMA	RIB	P8	RBY	IMF	NFI-F	Doc	Claw	Angle	Leg	SA	SA-L	
31	GXN22T672	+5.2	+8.1	-0.4	+1.8	+39	+66	+84	+61	+22	+1.8	-6.0	+4.3	+9.0	-2.1	-2.7	+1.0	+4.7	+0.90	+16	+0.64	+0.96	+1.16	\$222	\$346
32	GXN22T666	+6.6	+5.0	-2.7	+2.5	+47	+78	+99	+61	+26	+1.0	-5.6	+61	+11.6	+0.8	+1.4	+0.6	+2.1	+0.26	+15	+0.86	+0.98	+0.96	\$237	\$365
33	GXN22T670	+4.0	+4.5	-2.0	+2.7	+50	+91	+123	+85	+25	+1.0	-5.9	+80	+4.5	+0.3	-0.3	+0.1	+3.1	+0.30	+34	+0.62	+1.16	+1.04	\$231	\$374
34	GXN22T636	-1.5	+1.5	-5.9	+4.0	+45	+79	+98	+67	+20	+1.7	-3.9	+53	+13.3	+1.9	+2.0	-0.2	+6.1	+0.74	+35	+0.96	+1.00	+0.96	\$222	\$332
35	GXN22T637	+7.0	+4.2	-7.7	+0.8	+44	+75	+101	+71	+20	+2.2	-4.8	+61	+10.6	+1.3	+1.4	+0.4	+2.9	+1.16	+20	+1.08	+1.08	+1.20	\$216	\$349
36	GXN22T665	+5.3	+2.9	-4.9	+3.1	+57	+90	+122	+107	+19	+2.6	-7.2	+68	+5.1	-0.2	-1.0	-0.4	+6.5	+0.45	+14	+1.02	+1.04	+1.08	\$257	\$423
37	GXN22T708	-4.4	+2.5	-4.0	+4.5	+50	+86	+97	+72	+11	+1.1	-3.7	+54	+17.0	-2.2	-4.2	+1.2	+6.3	+0.32	+1	+0.94	+0.78	+0.98	\$240	\$348
38	GXN22T631	+5.0	+6.1	-9.1	+2.0	+44	+84	+107	+82	+13	+1.6	-5.8	+49	+14.0	-1.4	-2.3	+0.3	+6.9	+0.73	+25	+1.10	+0.98	+0.92	\$254	\$403
39	GXN22T684	+1.8	+3.4	-1.4	+5.0	+51	+90	+125	+143	+16	+1.6	-4.0	+63	+11.6	-1.3	-3.2	+1.2	+4.5	+0.04	+14	+0.76	+0.78	+0.82	\$203	\$373
40	GXN22T662	+0.3	+2.7	-3.8	+4.4	+56	+106	+140	+114	+23	+0.4	-4.1	+83	+9.4	-2.8	-4.5	+0.6	+3.0	-0.15	+36	+1.06	+0.86	+0.80	\$217	\$369
41	GXN22T712	+1.0	+7.2	-7.1	+2.5	+53	+98	+135	+101	+21	+0.4	-3.9	+78	+8.3	-1.7	-1.3	+0.9	+1.5	-0.11	+32	+1.22	+1.16	+0.94	\$218	\$363
42	GXN22T653	+8.5	+9.1	-4.9	-1.1	+50	+100	+136	+105	+20	+3.5	-6.8	+80	+7.7	+3.9	+4.2	-0.6	+4.3	+0.37	+20	+1.00	+1.08	+1.12	\$261	\$447
43	GXN22T711	+2.0	+4.4	-5.3	+4.0	+58	+94	+125	+108	+18	+0.6	-6.2	+72	+6.3	-2.1	-4.2	+0.6	+4.2	+0.24	+18	+0.86	+0.80	+0.84	\$242	\$397
44	GXN22T714	+6.1	+4.8	-3.8	+2.3	+58	+95	+118	+93	+17	+2.8	-7.9	+70	+6.5	-0.7	-0.6	-0.3	+5.1	-0.10	+16	+0.90	+0.94	+1.04	\$272	\$439
45	GXN22T720	+0.5	-5.3	-3.2	+1.9	+51	+88	+114	+65	+19	+0.8	-3.0	+58	+9.9	+0.7	+0.3	+0.8	+1.5	-0.13	+6	+0.94	+0.94	+0.82	\$210	\$312
46	GXN22T731	+0.5	-3.7	-2.1	+4.8	+58	+93	+123	+100	+15	+2.9	-6.2	+58	+14.8	-2.4	-4.0	+1.9	+3.7	+0.04	+8	+0.66	+0.76	+0.82	\$264	\$406
47	GXN22T722	-0.5	-1.4	+0.8	+2.7	+55	+96	+126	+109	+23	+2.2	-2.6	+68	+9.2	-2.3	-4.3	+1.1	+4.0	-0.34	+22	+0.90	+0.74	+1.00	\$204	\$338
48	GXN22T726	+9.9	+4.0	-2.8	+0.1	+47	+80	+102	+64	+16	+3.0	-2.6	+53	+8.5	+0.3	-2.6	+0.8	+3.8	+0.00	+10	+0.78	+0.90	+0.96	\$211	\$332
49	GXN22T632	+7.8	+2.2	-6.9	-0.6	+34	+63	+80	+59	+15	+0.9	-4.2	+30	+12.1	+3.6	+2.7	-0.8	+6.9	+1.65	+16	+0.78	+0.82	+0.94	\$200	\$319
50	GXN22T718	+2.9	+7.7	-3.7	+4.6	+57	+94	+120	+107	+11	+2.2	-6.5	+58	+13.7	+1.4	+2.6	+0.8	+3.4	+0.25	+6	+0.72	+0.96	+0.82	\$276	\$445
51	GXN22T740	+0.1	+3.7	-8.9	+6.4	+66	+119	+152	+131	+23	+2.4	-6.3	+95	+6.7	-0.9	-1.9	+0.1	+3.8	+0.07	+19	+1.08	+0.84	+0.54	\$262	\$442
52	GXN22T697	+5.8	+7.2	-11.1	+2.3	+69	+120	+157	+133	+17	+0.6	-7.2	+96	+3.9	-0.7	-2.5	-1.1	+6.5	+0.32	+29	+0.70	+1.04	+0.96	\$290	\$492
53	GXN22T730	-2.5	+1.7	+0.6	+2.9	+47	+99	+143	+126	+21	+3.1	-3.1	+73	+7.7	-0.9	-3.0	+0.4	+4.5	-0.36	+10	+0.80	+1.08	+1.08	\$180	\$331
54	GXN22T743	+11.2	+7.0	-9.0	-1.8	+47	+86	+115	+76	+25	+2.5	-8.3	+78	+6.6	+2.0	+2.0	-0.2	+5.1	+0.39	+22	+1.04	+1.06	+1.06	\$271	\$430
55	GXN22T741	+6.5	+4.5	-5.6	+3.1	+51	+95	+123	+93	+16	+1.6	-6.2	+74	+12.7	+2.8	+3.5	+0.2	+3.2	+0.61	+16	+1.14	+1.06	+1.10	\$264	\$428
56	GXN22T734	+2.6	+1.0	-2.1	+3.8	+51	+86	+100	+64	+22	+0.5	-3.1	+52	+1.0	+0.6	+3.3	-0.9	+3.5	-0.63	+19	+0.84	+0.96	+0.84	\$200	\$311
57	GXN22T689	+8.9	+5.8	-12.4	-0.9	+48	+97	+121	+85	+21	+1.6	-2.9	+54	+3.9	+1.1	-0.8	-0.7	+4.8	+0.47	+15	+1.04	+1.04	+0.78	\$208	\$355
58	GXN22T696	+2.9	+3.9	-4.8	+4.7	+55	+103	+132	+100	+24	+1.9	-8.0	+89	+10.2	-0.5	-1.1	+0.0	+4.8	+0.83	+31	+1.22	+1.08	+0.94	\$275	\$440
59	GXN22T744	+5.0	+3.5	-3.7	+2.2	+55	+94	+122	+78	+28	+1.1	-5.5	+68	+6.3	-0.3	-3.4	+0.5	+4.8	+0.31	+5	+1.10	+1.08	+1.10	\$259	\$398
60	GXN22T644	+10.2	+7.7	-7.1	-0.6	+45	+77	+82	+48	+10	+1.7	-6.8	+56	+12.1	+4.0	+5.1	-0.3	+3.7	+0.85	+10	+1.22	+1.12	+0.88	\$260	\$396



## Lot 1

## KELLY ANGUS T645<sup>PV</sup>

## GXN22T645



DOB: 18/7/2022

Registration Status:HBR

Genetic Status: AMFU,CAFU,DDFU,NHFU

AYRVALE BARTEL E7<sup>PV</sup>  
 AYRVALE HERCULES H9<sup>PV</sup>  
 LAWSONS INVINCIBLE F338<sup>SV</sup>  
 Sire: DXTP613 TEXAS POWERPLAY P613<sup>PV</sup>  
 BANGADANG WESTERN EXPRESS E10<sup>SV</sup>  
 TEXAS UNDINE H647<sup>SV</sup>  
 TEXAS UNDINE Z183<sup>PV</sup>

PA POWER TOOL 9108<sup>SV</sup>  
 PA FULL POWER 1208<sup>PV</sup>  
 PINE VIEW SQR RITA W091<sup>#</sup>  
 Dam: GXNQ113 KELLY ANGUS FULL POWER Q113<sup>SV</sup>  
 LAWSONS INVINCIBLE C402<sup>PV</sup>  
 LAWSONS INVINCIBLE G8144<sup>#</sup>  
 LAWSONS FAIR DINKUM C8193<sup>#</sup>

### Mid February 2024 TransTasman Angus Cattle Evaluation

TACE	Dir	Dtrs	GL	BW	200 W	400 W	600 W	MCW	Milk	SS	Doc
EBV	+3.7	+7.7	-7.5	+2.1	+40	+86	+115	+80	+19	-0.2	+19
ACC	67%	57%	83%	82%	83%	81%	82%	78%	74%	80%	77%
TACE	D t C	CWT	EMA	Rib	Rump	RBY	IMF	NFI-F	Claw	Angle	Leg
EBV	-1.7	+81	+12.7	+1.2	+0.9	+0.8	+2.6	+1.45	+1.24	+1.08	+0.96
ACC	44%	71%	71%	70%	72%	63%	75%	63%	73%	73%	68%

### Selection Indexes

\$A	\$A-L
\$201	\$330

**Traits Observed:** GL,BWT,400WT, Scan(EMA,Rib,Rump,IMF), Structure(Claw Set x 1, Foot Angle x 1), Genomics

Notes: A long bodied, smooth shouldered Powerplay son with a good carcass.

Purchaser: ..... \$:

## Lot 2

## KELLY ANGUS T661<sup>SV</sup>

## GXN22T661

DOB: 21/7/2022

Registration Status:HBR

Genetic Status: AMFU,CAFU,DDFU,NHFU

AYRVALE BARTEL E7<sup>PV</sup>  
 AYRVALE HERCULES H9<sup>PV</sup>  
 LAWSONS INVINCIBLE F338<sup>SV</sup>  
 Sire: DXTP613 TEXAS POWERPLAY P613<sup>PV</sup>  
 BANGADANG WESTERN EXPRESS E10<sup>SV</sup>  
 TEXAS UNDINE H647<sup>SV</sup>  
 TEXAS UNDINE Z183<sup>PV</sup>

CONNEALY FORWARD<sup>#</sup>  
 STERITA PARK BLACK JACK J231<sup>PV</sup>  
 SYDGEN FOREVER LADY 4413<sup>#</sup>  
 Dam: GXNM12 KELLY ANGUS BLACK JACK M12<sup>#</sup>  
 LAWSONS NOVAK E313<sup>SV</sup>  
 LAWSONS NOVAK K1532<sup>#</sup>  
 LAWSONS TANK B1155 H8021<sup>#</sup>

### Mid February 2024 TransTasman Angus Cattle Evaluation

TACE	Dir	Dtrs	GL	BW	200 W	400 W	600 W	MCW	Milk	SS	Doc
EBV	-5.1	+1.7	-7.6	+3.7	+49	+85	+123	+87	+18	+1.1	+12
ACC	66%	55%	83%	82%	83%	81%	81%	78%	73%	79%	76%
TACE	D t C	CWT	EMA	Rib	Rump	RBY	IMF	NFI-F	Claw	Angle	Leg
EBV	-3.5	+75	+7.9	-1.1	-1.6	+0.3	+2.4	-0.56	+0.80	+0.76	+1.02
ACC	42%	70%	70%	69%	71%	62%	74%	61%	72%	73%	68%

### Selection Indexes

\$A	\$A-L
\$176	\$284

**Traits Observed:** GL,BWT,400WT, Scan(EMA,Rib,Rump,IMF), Structure(Claw Set x 1, Foot Angle x 1), Genomics

Notes: A well put together Powerplay son out of a prominent female line in the herd that always weans the heaviest calves of the group.

Purchaser: ..... \$:

## Lot 3

## KELLY ANGUS T707<sup>PV</sup>

## GXN22T707

DOB: 14/8/2022

Registration Status:HBR

Genetic Status: AMFU,CAFU,DDFU,NHFU

AYRVALE BARTEL E7<sup>PV</sup>  
 AYRVALE HERCULES H9<sup>PV</sup>  
 LAWSONS INVINCIBLE F338<sup>SV</sup>  
 Sire: DXTP613 TEXAS POWERPLAY P613<sup>PV</sup>  
 BANGADANG WESTERN EXPRESS E10<sup>SV</sup>  
 TEXAS UNDINE H647<sup>SV</sup>  
 TEXAS UNDINE Z183<sup>PV</sup>

MCC DAYBREAK<sup>#</sup>  
 G A R SUNRISE<sup>SV</sup>  
 G A R OBJECTIVE R227<sup>#</sup>  
 Dam: GXNN42 KELLY ANGUS SUNRISE N42<sup>SV</sup>  
 AYRVALE BARTEL E7<sup>PV</sup>  
 LAWSONS BARTEL E7 K1510<sup>#</sup>  
 LAWSONS NOVAK H8152<sup>#</sup>

### Mid February 2024 TransTasman Angus Cattle Evaluation

TACE	Dir	Dtrs	GL	BW	200 W	400 W	600 W	MCW	Milk	SS	Doc
EBV	+0.3	+5.6	-0.5	+3.1	+49	+101	+130	+93	+21	+0.3	+19
ACC	67%	57%	84%	83%	84%	82%	82%	79%	74%	80%	77%
TACE	D t C	CWT	EMA	Rib	Rump	RBY	IMF	NFI-F	Claw	Angle	Leg
EBV	-4.1	+86	+4.3	+0.0	+1.2	+0.1	+2.4	+0.30	+0.88	+1.00	+1.02
ACC	44%	71%	71%	71%	72%	63%	75%	63%	71%	71%	65%

### Selection Indexes

\$A	\$A-L
\$214	\$355

**Traits Observed:** BWT,400WT, Scan(EMA,Rib,Rump,IMF), Structure(Claw Set x 1, Foot Angle x 1), Genomics

Notes: A bull that will pack plenty of punch and will breed really nice type females.

Purchaser: ..... \$:

Top 10%

Top 20%

## Lot 4

## KELLY ANGUS T652<sup>SV</sup>

## GXN22T652



DOB: 19/7/2022

Registration Status:HBR

Genetic Status: AMF,CAFU,DDFU,NHFU

AYRVALE BARTEL E7<sup>PV</sup>  
 AYRVALE HERCULES H9<sup>PV</sup>  
 LAWSONS INVINCIBLE F338<sup>SV</sup>  
 Sire: DXTP613 TEXAS POWERPLAY P613<sup>PV</sup>  
 BANGADANG WESTERN EXPRESS E10<sup>SV</sup>  
 TEXAS UNDINE H647<sup>SV</sup>  
 TEXAS UNDINE Z183<sup>PV</sup>

TE MANIA BERKLEY B1<sup>PV</sup>  
 MILWILLAH FEVOLA F37<sup>PV</sup>  
 MILWILLAH BARUNAH B36<sup>SV</sup>  
 Dam: GXNM105 KELLY ANGUS FEVOLA M105<sup>#</sup>  
 TC TOTAL 410<sup>#</sup>  
 LAWSONS TOTAL E843<sup>#</sup>  
 LAWSONS NEW DESIGN 1407 Z372<sup>#</sup>

### Mid February 2024 TransTasman Angus Cattle Evaluation

TACE	Dir	Dtrs	GL	BW	200 W	400 W	600 W	MCW	Milk	SS	Doc
EBV	+6.1	+6.9	-10.7	+1.1	+48	+81	+117	+84	+16	-0.9	+21
ACC	64%	54%	82%	82%	82%	81%	81%	77%	72%	79%	75%

TACE	D t C	CWT	EMA	Rib	Rump	RBY	IMF	NFI-F	Claw	Angle	Leg
EBV	-5.8	+83	+6.1	+1.0	+1.1	+0.1	+2.1	+0.47	+0.84	+1.04	+0.76
ACC	41%	69%	69%	69%	70%	61%	73%	60%	73%	73%	69%

### Selection Indexes

\$A	\$A-L
\$223	\$368

**Traits Observed:** BWT,400WT, Scan(EMA,Rib,Rump,IMF), Structure(Claw Set x 1, Foot Angle x 1), Genomics

Notes: Another Powerplay son who stands proud. He has a strong sirey head, good topline and plenty of thickness.

Purchaser: ..... \$:

## Lot 5

## KELLY ANGUS T655<sup>SV</sup>

## GXN22T655

DOB: 20/7/2022

Registration Status:HBR

Genetic Status: AMFU,CAFU,DDFU,NHFU

G A R PROGRESS<sup>SV</sup>  
 G A R MOMENTUM<sup>PV</sup>  
 G A R BIG EYE 1770<sup>#</sup>  
 Sire: VLYR4010 LAWSONS ROCKY R4010<sup>PV</sup>  
 PARINGA JUDD J5<sup>PV</sup>  
 LAWSONS JUDD P4005<sup>SV</sup>  
 LAWSONS PROPHET M4047<sup>#</sup>

TC TOTAL 410<sup>#</sup>  
 LAWSONS NOVAK E313<sup>SV</sup>  
 LAWSONS PREDESTINED B770<sup>SV</sup>  
 Dam: VLYK1501 LAWSONS NOVAK K1501<sup>#</sup>  
 AYRVALE BARTEL E7<sup>PV</sup>  
 LAWSONS BARTEL E7 H821<sup>#</sup>  
 LAWSONS EQUATOR E813<sup>#</sup>

### Mid February 2024 TransTasman Angus Cattle Evaluation

TACE	Dir	Dtrs	GL	BW	200 W	400 W	600 W	MCW	Milk	SS	Doc
EBV	-1.8	+3.5	-5.5	+5.4	+64	+108	+142	+125	+20	+1.3	+22
ACC	66%	56%	83%	82%	83%	81%	81%	78%	73%	79%	77%

TACE	D t C	CWT	EMA	Rib	Rump	RBY	IMF	NFI-F	Claw	Angle	Leg
EBV	-4.5	+89	+7.9	+0.5	+2.6	-0.1	+2.6	+0.20	+1.08	+0.96	+0.98
ACC	44%	71%	70%	70%	71%	62%	75%	62%	74%	75%	71%

### Selection Indexes

\$A	\$A-L
\$235	\$397

**Traits Observed:** GL,BWT,400WT, Scan(EMA,Rib,Rump,IMF), Structure(Claw Set x 1, Foot Angle x 1), Genomics

Notes: Large frame cow bull with plenty of weight. Moves very well with a sirey outlook.

Purchaser: ..... \$:

## Lot 6

## KELLY ANGUS T685<sup>PV</sup>

## GXN22T685

DOB: 28/7/2022

Registration Status:HBR

Genetic Status: AMFU,CAFU,DDFU,NHFU

G A R PROGRESS<sup>SV</sup>  
 G A R MOMENTUM<sup>PV</sup>  
 G A R BIG EYE 1770<sup>#</sup>  
 Sire: VLYR4010 LAWSONS ROCKY R4010<sup>PV</sup>  
 PARINGA JUDD J5<sup>PV</sup>  
 LAWSONS JUDD P4005<sup>SV</sup>  
 LAWSONS PROPHET M4047<sup>#</sup>

AYRVALE HERCULES H9<sup>PV</sup>  
 PARINGA HERCULES K73<sup>SV</sup>  
 LAWSONS ROMEO C105<sup>SV</sup>  
 Dam: GXNQ41 KELLY ANGUS HERC K73 Q41<sup>PV</sup>  
 STERITA PARK BLACK JACK J231<sup>PV</sup>  
 KELLY ANGUS BLACK JACK M55<sup>SV</sup>  
 LAWSONS AFRICA H1028<sup>#</sup>

### Mid February 2024 TransTasman Angus Cattle Evaluation

TACE	Dir	Dtrs	GL	BW	200 W	400 W	600 W	MCW	Milk	SS	Doc
EBV	+3.2	+5.3	-2.1	+3.5	+56	+99	+123	+105	+19	+1.8	+20
ACC	64%	53%	83%	82%	82%	81%	81%	77%	72%	79%	76%

TACE	D t C	CWT	EMA	Rib	Rump	RBY	IMF	NFI-F	Claw	Angle	Leg
EBV	-5.0	+64	+4.3	+2.8	+3.1	+0.0	+2.5	+0.34	+1.04	+1.28	+1.06
ACC	40%	68%	68%	68%	69%	60%	73%	59%	72%	72%	69%

### Selection Indexes

\$A	\$A-L
\$232	\$391

**Traits Observed:** GL,400WT, Scan(EMA,Rib,Rump,IMF), Structure(Claw Set x 1, Foot Angle x 1), Genomics

Notes: One of the heaviest bulls of the draft, T685 will add some punch to your herd.

Purchaser: ..... \$:

Top 10%

Top 20%

## Lot 7 KELLY ANGUS T677<sup>PV</sup> GXN22T677

DOB: 26/7/2022 Registration Status:HBR Genetic Status: AMFU,CAFU,DDF,NHFU  
 G A R PROGRESS<sup>SV</sup> KC HAAS GPS<sup>#</sup>  
 G A R MOMENTUM<sup>PV</sup> TEXAS MOUNT K002<sup>PV</sup>  
 G A R BIG EYE 1770<sup>#</sup> TEXAS UNDINE Z183<sup>PV</sup>  
 Sire: VLYR4010 LAWSONS ROCKY R4010<sup>PV</sup> Dam: GXNR10 KELLY ANGUS K2 R10<sup>SV</sup>  
 PARINGA JUDD J5<sup>PV</sup> TUWHARETOA REGENT D145<sup>PV</sup>  
 LAWSONS JUDD P4005<sup>SV</sup> LAWSONS REGENT J1178<sup>#</sup>  
 LAWSONS PROPHET M4047<sup>#</sup> LAWSONS DINKY DI E537<sup>#</sup>

### Mid February 2024 TransTasman Angus Cattle Evaluation

TACE	Dir	Dtrs	GL	BW	200 W	400 W	600 W	MCW	Milk	SS	Doc
EBV	+1.7	+2.5	-2.3	+5.1	+56	+101	+135	+113	+21	+4.0	+17
ACC	67%	57%	83%	82%	83%	82%	82%	78%	74%	80%	78%
TACE	D t C	CWT	EMA	Rib	Rump	RBY	IMF	NFI-F	Claw	Angle	Leg
EBV	-3.6	+85	+9.4	-1.4	-2.2	+0.4	+4.9	+1.10	+0.80	+0.96	+1.02
ACC	45%	71%	71%	70%	71%	62%	75%	62%	73%	73%	70%

### Selection Indexes

\$A	\$A-L
\$228	\$383

**Traits Observed:** GL,BWT,400WT, Scan(EMA,Rib,Rump,IMF), Structure(Claw Set x 1, Foot Angle x 1), Genomics

Notes: This bull is square over the top and really sound. He will mature out to a well balance bull. Note small amount white.

Purchaser: ..... \$: .....

## Lot 8 KELLY ANGUS T647<sup>PV</sup> GXN22T647



DOB: 19/7/2022 Registration Status:HBR Genetic Status: AMFU,CAFU,DDFU,NHFU  
 G A R PROGRESS<sup>SV</sup> PARINGA JUDD J5<sup>PV</sup>  
 G A R MOMENTUM<sup>PV</sup> LAWSONS BLUE BAGGER N149<sup>SV</sup>  
 G A R BIG EYE 1770<sup>#</sup> LAWSONS ANTICIPATION L684<sup>#</sup>  
 Sire: USA19570738 G A R TRANSCENDENT<sup>PV</sup> Dam: GXNR66 KELLY ANGUS BLUE BAGGER R66<sup>PV</sup>  
 G A R PROPHET<sup>SV</sup> T C A VISIONARY 158<sup>SV</sup>  
 G A R PROPHET 2685<sup>#</sup> KELLY ANGUS VISIONARY P26<sup>SV</sup>  
 G A R DAYBREAK 2842<sup>#</sup> KELLY ANGUS PROPHET M92<sup>#</sup>

### Mid February 2024 TransTasman Angus Cattle Evaluation

TACE	Dir	Dtrs	GL	BW	200 W	400 W	600 W	MCW	Milk	SS	Doc
EBV	+5.4	+2.7	-5.1	+3.2	+53	+94	+125	+100	+18	+0.5	+1
ACC	66%	56%	83%	82%	83%	81%	81%	78%	74%	79%	75%
TACE	D t C	CWT	EMA	Rib	Rump	RBY	IMF	NFI-F	Claw	Angle	Leg
EBV	-4.2	+75	+14.3	-1.8	-3.0	+0.9	+4.9	+0.51	+1.08	+0.92	+0.96
ACC	42%	70%	70%	70%	70%	62%	75%	61%	73%	73%	67%

### Selection Indexes

\$A	\$A-L
\$252	\$403

**Traits Observed:** GL,BWT,400WT, Scan(EMA,Rib,Rump,IMF), Structure(Claw Set x 1, Foot Angle x 1), Genomics

Notes: T647 is a real power bull, plenty of weight and muscle in this guy that scanned in the top end of the group.

Purchaser: ..... \$: .....

## Lot 9 KELLY ANGUS T638<sup>SV</sup> GXN22T638



DOB: 18/7/2022 Registration Status:HBR Genetic Status: AMFU,CAFU,DDF,NHFU  
 G A R PROGRESS<sup>SV</sup> TE MANIA BARTEL B219<sup>PV</sup>  
 G A R MOMENTUM<sup>PV</sup> AYRVALE BARTEL E7<sup>PV</sup>  
 G A R BIG EYE 1770<sup>#</sup> EAGLEHAWK JEDDA B32<sup>SV</sup>  
 Sire: USA19570738 G A R TRANSCENDENT<sup>PV</sup> Dam: VLYK1586 LAWSONS BARTEL E7 K1586<sup>#</sup>  
 G A R PROPHET<sup>SV</sup> LAWSONS PAYLOAD X951<sup>#</sup>  
 G A R PROPHET 2685<sup>#</sup> LAWSONS PAYLOAD X951 E165<sup>#</sup>  
 G A R DAYBREAK 2842<sup>#</sup> LAWSONS CASPER A1205<sup>#</sup>

### Mid February 2024 TransTasman Angus Cattle Evaluation

TACE	Dir	Dtrs	GL	BW	200 W	400 W	600 W	MCW	Milk	SS	Doc
EBV	+4.5	+1.9	-6.1	+3.8	+59	+110	+155	+137	+26	+1.9	+25
ACC	68%	59%	84%	83%	84%	82%	82%	79%	75%	80%	76%
TACE	D t C	CWT	EMA	Rib	Rump	RBY	IMF	NFI-F	Claw	Angle	Leg
EBV	-4.4	+86	+8.4	-3.2	-4.4	+0.3	+5.4	+0.93	+1.02	+1.00	+1.00
ACC	47%	73%	72%	72%	72%	64%	76%	64%	73%	73%	67%

### Selection Indexes

\$A	\$A-L
\$240	\$419

**Traits Observed:** GL,BWT,400WT, Scan(EMA,Rib,Rump,IMF), Structure(Claw Set x 1, Foot Angle x 1), Genomics

Notes: T638 was used as a backup sire to AI. He is out of great old E7 cow and is exceptionally quiet.

Purchaser: ..... \$: .....

Top 10% Top 20%



LOT 10  
KELLY ANGUS T695pv



LOT 15  
KELLY ANGUS T667sv



LOT 18  
KELLY ANGUS T640sv



LOT 19  
KELLY ANGUS T658sv



## Lot 10

## KELLY ANGUS T695<sup>PV</sup>

## GXN22T695



DOB: 5/8/2022

Registration Status:HBR

Genetic Status: AMFU,CAFU,DDFU,NHFU

G A R SURE FIRE<sup>SV</sup>  
 RES DARK FIRE E612<sup>SV</sup>  
 RES ELELA 193 587 466<sup>#</sup>  
 Sire: GXNR232 KELLY ANGUS RINGLEADER R232<sup>SV</sup>  
 G A R PROPHET<sup>SV</sup>  
 LAWSONS PROPHET K1417<sup>#</sup>  
 LAWSONS TANK E468<sup>#</sup>

TUWHARETOA REGENT D145<sup>PV</sup>  
 PARINGA JUDD J5<sup>PV</sup>  
 STRATHEWEN BERKLEY WILPENA F30<sup>PV</sup>  
 Dam: GXNN31 KELLY ANGUS JUDD N31<sup>SV</sup>  
 LAWSONS INCREDIBLE H803<sup>PV</sup>  
 LAWSONS INCREDIBLE L1289<sup>#</sup>  
 LAWSONS INVINCIBLE G1844<sup>#</sup>

### Mid February 2024 TransTasman Angus Cattle Evaluation

TACE	Dir	Dtrs	GL	BW	200 W	400 W	600 W	MCW	Milk	SS	Doc
EBV	+7.0	+5.7	-9.0	+0.9	+48	+92	+117	+86	+27	+1.5	+12
ACC	64%	54%	82%	81%	82%	80%	80%	77%	72%	78%	74%

TACE	D t C	CWT	EMA	Rib	Rump	RBY	IMF	NFI-F	Claw	Angle	Leg
EBV	-8.1	+81	+8.8	-0.6	-2.5	+0.5	+4.6	+0.56	+1.08	+0.96	+0.90
ACC	41%	69%	69%	69%	70%	61%	74%	61%	72%	72%	67%

### Selection Indexes

\$A	\$A-L
\$264	\$427

**Traits Observed:** GL,BWT,400WT, Scan(EMA,Rib,Rump,IMF), Structure(Claw Set x 1, Foot Angle x 1), Genomics

Notes: A crowd favourite that is a fantastic heifer option with added carcase merit.

Purchaser: ..... \$: .....

## Lot 11

## KELLY ANGUS T701<sup>PV</sup>

## GXN22T701



DOB: 8/8/2022

Registration Status:APR

Genetic Status: AMFU,CAFU,DDFU,NHFU

G A R SURE FIRE<sup>SV</sup>  
 RES DARK FIRE E612<sup>SV</sup>  
 RES ELELA 193 587 466<sup>#</sup>  
 Sire: GXNR232 KELLY ANGUS RINGLEADER R232<sup>SV</sup>  
 G A R PROPHET<sup>SV</sup>  
 LAWSONS PROPHET K1417<sup>#</sup>  
 LAWSONS TANK E468<sup>#</sup>

BOWMONT JACKPOT J310<sup>PV</sup>  
 HAZELDEAN M584<sup>PV</sup>  
 HAZELDEAN G38<sup>PV</sup>  
 Dam: GXNQ44 KELLY ANGUS JACKPOT Q44<sup>SV</sup>  
 STERITA PARK BLACK JACK J231<sup>PV</sup>  
 KELLY ANGUS BLACK JACK M51<sup>#</sup>  
 LAWSONS STORTH OAKS H936<sup>#</sup>

### Mid February 2024 TransTasman Angus Cattle Evaluation

TACE	Dir	Dtrs	GL	BW	200 W	400 W	600 W	MCW	Milk	SS	Doc
EBV	+2.8	+8.8	-8.5	+2.8	+64	+109	+135	+98	+22	+0.9	+16
ACC	62%	51%	81%	80%	81%	79%	79%	76%	71%	77%	73%

TACE	D t C	CWT	EMA	Rib	Rump	RBY	IMF	NFI-F	Claw	Angle	Leg
EBV	-6.7	+91	+7.0	-1.3	-0.9	-0.1	+3.5	-0.14	+0.60	+0.92	+0.90
ACC	38%	68%	68%	67%	69%	59%	73%	59%	73%	74%	68%

### Selection Indexes

\$A	\$A-L
\$279	\$445

**Traits Observed:** BWT,400WT, Scan(EMA,Rib,Rump,IMF), Structure(Claw Set x 1, Foot Angle x 1), Genomics

Notes: A really well put together smooth bull with plenty of length.

Purchaser: ..... \$: .....

## Lot 12

## KELLY ANGUS T691<sup>PV</sup>

## GXN22T691

DOB: 4/8/2022

Registration Status:HBR

Genetic Status: AMFU,CAFU,DDFU,NHFU

G A R SURE FIRE<sup>SV</sup>  
 RES DARK FIRE E612<sup>SV</sup>  
 RES ELELA 193 587 466<sup>#</sup>  
 Sire: GXNR232 KELLY ANGUS RINGLEADER R232<sup>SV</sup>  
 G A R PROPHET<sup>SV</sup>  
 LAWSONS PROPHET K1417<sup>#</sup>  
 LAWSONS TANK E468<sup>#</sup>

KC HAAS GPS<sup>#</sup>  
 TEXAS MOUNT K002<sup>PV</sup>  
 TEXAS UNDINE Z183<sup>PV</sup>  
 Dam: GXNP58 KELLY ANGUS K2 P58<sup>SV</sup>  
 LAWSONS INCREDIBLE H803<sup>PV</sup>  
 KELLY ANGUS INCREDIBLE M3<sup>#</sup>  
 LAWSONS PROPHET K1417<sup>#</sup>

### Mid February 2024 TransTasman Angus Cattle Evaluation

TACE	Dir	Dtrs	GL	BW	200 W	400 W	600 W	MCW	Milk	SS	Doc
EBV	-5.8	+2.4	-10.2	+7.0	+67	+122	+167	+156	+20	+2.3	+9
ACC	65%	55%	83%	82%	83%	81%	81%	78%	74%	79%	75%

TACE	D t C	CWT	EMA	Rib	Rump	RBY	IMF	NFI-F	Claw	Angle	Leg
EBV	-5.7	+94	+9.2	-3.7	-4.0	+0.2	+5.4	+0.24	+0.96	+1.26	+0.98
ACC	42%	70%	70%	69%	71%	62%	74%	62%	65%	65%	60%

### Selection Indexes

\$A	\$A-L
\$247	\$427

**Traits Observed:** GL,BWT, Scan(EMA,Rib,Rump,IMF),Genomics

Notes: A gentle giant and one of the larger framed bulls of the draft perfect for cow joining.

Purchaser: ..... \$: .....

Top 10%

Top 20%

## Lot 13

## KELLY ANGUS T626<sup>PV</sup>

## GXN22T626



DOB: 10/7/2022

Registration Status: APR

Genetic Status: AMFU, CAFU, DDFU, NHFU

MILWILLAH GATSBY G279<sup>PV</sup>  
 BOWMONT KING K306<sup>PV</sup>  
 LANDFALL FEARLESS D58<sup>SV</sup>  
 Sire: BLAN127 KNOWLA NOBLEMAN N127<sup>SV</sup>  
 MATAURI REALITY 839<sup>#</sup>  
 KNOWLA LOWAN K49<sup>#</sup>  
 KNOWLA LOWAN H59<sup>SV</sup>

AYRVALE BARTEL E7<sup>PV</sup>  
 AYRVALE HERCULES H9<sup>PV</sup>  
 LAWSONS INVINCIBLE F338<sup>SV</sup>  
 Dam: GXNQ135 KELLY ANGUS HERCULES Q135<sup>SV</sup>  
 LAWSONS HARVARD H205<sup>PV</sup>  
 LAWSONS HARVARD L1328<sup>#</sup>  
 LAWSONS AMBASSADOR J1263<sup>#</sup>

### Mid February 2024 TransTasman Angus Cattle Evaluation

TACE	Dir	Dtrs	GL	BW	200 W	400 W	600 W	MCW	Milk	SS	Doc
EBV	+9.5	+8.6	-12.1	+0.4	+48	+92	+129	+104	+23	+3.2	+29
ACC	67%	58%	83%	82%	83%	82%	82%	79%	75%	80%	77%

TACE	D t C	CWT	EMA	Rib	Rump	RBY	IMF	NFI-F	Claw	Angle	Leg
EBV	-6.3	+74	+13.2	+0.6	-0.9	+1.0	+4.8	+0.45	+0.88	+1.06	+1.14
ACC	44%	72%	71%	71%	72%	63%	76%	63%	73%	73%	70%

### Selection Indexes

\$A	\$A-L
\$266	\$443

**Traits Observed:** GL, BWT, 600WT, Scan(EMA, Rib, Rump, IMF), Structure(Claw Set x 1, Foot Angle x 1), Genomics

Notes: Used over heifers. This bull ticks many boxes with key calving ease and birth weight traits all in the top 5% of the breed. Backed up by an amazing carcass.

Purchaser: ..... \$: .....

## Lot 14

## KELLY ANGUS T656<sup>SV</sup>

## GXN22T656



DOB: 20/7/2022

Registration Status: HBR

Genetic Status: AMFU, CAFU, DDFU, NHFU

MILWILLAH GATSBY G279<sup>PV</sup>  
 BOWMONT KING K306<sup>PV</sup>  
 LANDFALL FEARLESS D58<sup>SV</sup>  
 Sire: BLAN127 KNOWLA NOBLEMAN N127<sup>SV</sup>  
 MATAURI REALITY 839<sup>#</sup>  
 KNOWLA LOWAN K49<sup>#</sup>  
 KNOWLA LOWAN H59<sup>SV</sup>

AYRVALE BARTEL E7<sup>PV</sup>  
 LAWSONS INCREDIBLE H803<sup>PV</sup>  
 LAWSONS DINKY DI E447<sup>PV</sup>  
 Dam: GXNM45 KELLY ANGUS INCREDIBLE M45<sup>#</sup>  
 TOPBOS AMBASSADOR F4<sup>PV</sup>  
 LAWSONS AMBASSADOR J1306<sup>#</sup>  
 LAWSONS TANK B1155 G1734<sup>#</sup>

### Mid February 2024 TransTasman Angus Cattle Evaluation

TACE	Dir	Dtrs	GL	BW	200 W	400 W	600 W	MCW	Milk	SS	Doc
EBV	+9.6	+4.9	-7.6	+0.1	+38	+75	+102	+65	+18	+1.9	+23
ACC	66%	57%	83%	82%	83%	82%	82%	79%	74%	80%	77%

TACE	D t C	CWT	EMA	Rib	Rump	RBY	IMF	NFI-F	Claw	Angle	Leg
EBV	-6.4	+51	+6.5	+2.0	+1.9	-0.2	+5.8	+0.73	+0.66	+1.08	+1.06
ACC	44%	71%	71%	71%	72%	63%	75%	63%	73%	73%	69%

### Selection Indexes

\$A	\$A-L
\$237	\$375

**Traits Observed:** GL, BWT, 600WT, Scan(EMA, Rib, Rump, IMF), Structure(Claw Set x 1, Foot Angle x 1), Genomics

Notes: A Nobleman son we used in herd out of a cow who will be hitting the donor pen this year.

Purchaser: ..... \$: .....

## Lot 15

## KELLY ANGUS T667<sup>SV</sup>

## GXN22T667

DOB: 22/7/2022

Registration Status: HBR

Genetic Status: AMFU, CAFU, DDFU, NHFU

G A R EARLY BIRD<sup>#</sup>  
 G A R ASHLAND<sup>PV</sup>  
 CHAIR ROCK AMBUSH 1018<sup>#</sup>  
 Sire: USA19266718 G A R HOME TOWN<sup>PV</sup>  
 G A R SURE FIRE<sup>SV</sup>  
 CHAIR ROCK SURE FIRE 6095<sup>#</sup>  
 CHAIR ROCK PROGRESS 3005<sup>#</sup>

TUWHARETOA REGENT D145<sup>PV</sup>  
 PARINGA JUDD J5<sup>PV</sup>  
 STRATHEWEN BERKLEY WILPENA F30<sup>PV</sup>  
 Dam: GXNM87 KELLY ANGUS JUDD M87<sup>#</sup>  
 LAWSONS TANK X1235<sup>#</sup>  
 LAWSONS TANK E232<sup>#</sup>  
 LAWSONS CONSISTENCE B588<sup>#</sup>

### Mid February 2024 TransTasman Angus Cattle Evaluation

TACE	Dir	Dtrs	GL	BW	200 W	400 W	600 W	MCW	Milk	SS	Doc
EBV	+2.4	-0.4	-5.1	+4.6	+56	+96	+122	+90	+15	+1.4	+30
ACC	70%	61%	83%	82%	84%	82%	82%	79%	75%	80%	78%

TACE	D t C	CWT	EMA	Rib	Rump	RBY	IMF	NFI-F	Claw	Angle	Leg
EBV	-5.5	+75	+11.4	-2.3	-3.4	+0.6	+5.5	+0.14	+1.02	+0.86	+0.76
ACC	45%	72%	72%	71%	72%	64%	76%	63%	75%	75%	71%

### Selection Indexes

\$A	\$A-L
\$262	\$403

**Traits Observed:** GL, BWT, 600WT, Scan(EMA, Rib, Rump, IMF), Structure(Claw Set x 1, Foot Angle x 1), Genomics

Notes: A really nice type bull that we used over as a backup sire. Plenty of meat in this Hometown son.

Purchaser: ..... \$: .....

Top 10%

Top 20%

## Lot 16

## KELLY ANGUS T657<sup>SV</sup>

## GXN22T657



DOB: 20/7/2022

Registration Status: APR

Genetic Status: AMFU, CAFU, DDFU, NHFU

G A R EARLY BIRD<sup>#</sup>  
 G A R ASHLAND<sup>PV</sup>  
 CHAIR ROCK AMBUSH 1018<sup>#</sup>  
 Sire: USA19266718 G A R HOME TOWN<sup>PV</sup>  
 G A R SURE FIRE<sup>SV</sup>  
 CHAIR ROCK SURE FIRE 6095<sup>#</sup>  
 CHAIR ROCK PROGRESS 3005<sup>#</sup>

TUWHARETOA REGENT D145<sup>PV</sup>  
 DUNOON GOODTHING G167<sup>PV</sup>  
 DUNOON PRINCESS B187<sup>PV</sup>  
 Dam: VLYK1512 LAWSONS GOODTHING K1512<sup>#</sup>  
 AYRVALE BARTEL E7<sup>PV</sup>  
 LAWSONS BARTEL E7 H1060<sup>#</sup>  
 LAWSONS PAYLOAD X951 E370<sup>#</sup>

### Mid February 2024 TransTasman Angus Cattle Evaluation

TACE	Dir	Dtrs	GL	BW	200 W	400 W	600 W	MCW	Milk	SS	Doc
EBV	+6.9	+1.8	-3.0	+2.7	+53	+82	+100	+48	+16	+1.8	+30
ACC	70%	61%	84%	83%	84%	82%	83%	79%	75%	81%	78%

TACE	D t C	CWT	EMA	Rib	Rump	RBY	IMF	NFI-F	Claw	Angle	Leg
EBV	-6.3	+77	+13.8	-0.5	-2.6	+1.2	+4.1	+0.06	+0.96	+0.82	+0.98
ACC	45%	73%	73%	72%	73%	65%	76%	64%	75%	76%	71%

### Selection Indexes

\$A	\$A-L
\$283	\$405

**Traits Observed:** GL, BWT, 400WT, Scan(EMA, Rib, Rump, IMF), Structure(Claw Set x 1, Foot Angle x 1), Genomics

Notes: A Hometown son out of a top older cow. Combining calving ease, low birth weight and a heap of carcass.

Purchaser: ..... \$: .....

## Lot 17

## KELLY ANGUS T635<sup>PV</sup>

## GXN22T635



DOB: 16/7/2022

Registration Status: HBR

Genetic Status: AMFU, CAFU, DDFU, NHFU

G A R EARLY BIRD<sup>#</sup>  
 G A R ASHLAND<sup>PV</sup>  
 CHAIR ROCK AMBUSH 1018<sup>#</sup>  
 Sire: USA19266718 G A R HOME TOWN<sup>PV</sup>  
 G A R SURE FIRE<sup>SV</sup>  
 CHAIR ROCK SURE FIRE 6095<sup>#</sup>  
 CHAIR ROCK PROGRESS 3005<sup>#</sup>

PRIME KATAPULT K1<sup>SV</sup>  
 KELLY ANGUS KATAPULT P225<sup>SV</sup>  
 LAWSONS SELECTIVE F8392<sup>#</sup>  
 Dam: GXNR113 KELLY ANGUS R113<sup>SV</sup>  
 RENNYLEA EDMUND E11<sup>PV</sup>  
 LAWSONS EDMUND E11 K1614<sup>#</sup>  
 LAWSONS TANK B1155 G372<sup>#</sup>

### Mid February 2024 TransTasman Angus Cattle Evaluation

TACE	Dir	Dtrs	GL	BW	200 W	400 W	600 W	MCW	Milk	SS	Doc
EBV	+6.3	+5.7	-5.6	+0.8	+49	+87	+95	+79	+14	+0.4	+27
ACC	69%	60%	83%	83%	84%	82%	82%	79%	75%	81%	78%

TACE	D t C	CWT	EMA	Rib	Rump	RBY	IMF	NFI-F	Claw	Angle	Leg
EBV	-6.7	+65	+8.0	+0.7	-0.6	+0.7	+4.4	+0.23	+1.24	+0.90	+0.82
ACC	43%	72%	72%	71%	72%	64%	76%	63%	74%	74%	68%

### Selection Indexes

\$A	\$A-L
\$259	\$410

**Traits Observed:** GL, BWT, 600WT, Scan(EMA, Rib, Rump, IMF), Structure(Claw Set x 1, Foot Angle x 1), Genomics

Notes: A Hometown out of a first calver that has a very low birth weight of 0.8 and an outstanding carcass. Born 6 days early weighing 28Kgs.

Purchaser: ..... \$: .....

## Lot 18

## KELLY ANGUS T640<sup>SV</sup>

## GXN22T640



DOB: 18/7/2022

Registration Status: HBR

Genetic Status: AMFU, CAFU, DDFU, NHFU

G A R EARLY BIRD<sup>#</sup>  
 G A R ASHLAND<sup>PV</sup>  
 CHAIR ROCK AMBUSH 1018<sup>#</sup>  
 Sire: USA19266718 G A R HOME TOWN<sup>PV</sup>  
 G A R SURE FIRE<sup>SV</sup>  
 CHAIR ROCK SURE FIRE 6095<sup>#</sup>  
 CHAIR ROCK PROGRESS 3005<sup>#</sup>

AYRVALE BARTEL E7<sup>PV</sup>  
 LAWSONS INCREDIBLE H803<sup>PV</sup>  
 LAWSONS DINKY DI E447<sup>PV</sup>  
 Dam: VLYL1286 LAWSONS INCREDIBLE L1286<sup>#</sup>  
 B/R NEW DAY 454<sup>#</sup>  
 LAWSONS NEW DAY G242<sup>#</sup>  
 LAWSONS SELECTIVE E690<sup>#</sup>

### Mid February 2024 TransTasman Angus Cattle Evaluation

TACE	Dir	Dtrs	GL	BW	200 W	400 W	600 W	MCW	Milk	SS	Doc
EBV	+5.6	+0.9	-8.4	+3.2	+51	+85	+103	+84	+15	+1.0	+5
ACC	71%	62%	84%	83%	84%	83%	83%	80%	76%	81%	79%

TACE	D t C	CWT	EMA	Rib	Rump	RBY	IMF	NFI-F	Claw	Angle	Leg
EBV	-8.0	+60	+7.7	-2.1	-4.5	+0.4	+3.6	+0.39	+0.86	+0.74	+1.06
ACC	45%	73%	73%	72%	73%	65%	77%	64%	74%	74%	69%

### Selection Indexes

\$A	\$A-L
\$235	\$380

**Traits Observed:** GL, BWT, 400WT, Scan(EMA, Rib, Rump, IMF), Structure(Claw Set x 1, Foot Angle x 1), Genomics

Notes: This Hometown son is as thick as they come, full of meat from nose to tail out of a great producing cow.

Purchaser: ..... \$: .....

Top 10%

Top 20%



## Lot 19

## KELLY ANGUS T658<sup>SV</sup>

## GXN22T658



DOB: 20/7/2022

Registration Status:HBR

Genetic Status: AMFU,CAFU,DDFU,NHFU

AYRVALE BARTEL E7<sup>PV</sup>  
 AYRVALE HERCULES H9<sup>PV</sup>  
 LAWSONS INVINCIBLE F338<sup>SV</sup>  
 Sire: DXTP613 TEXAS POWERPLAY P613<sup>PV</sup>  
 BANGADANG WESTERN EXPRESS E10<sup>SV</sup>  
 TEXAS UNDINE H647<sup>SV</sup>  
 TEXAS UNDINE Z183<sup>PV</sup>

AYRVALE BARTEL E7<sup>PV</sup>  
 LAWSONS BARTEL E7 H811<sup>SV</sup>  
 LAWSONS TANK E571<sup>#</sup>  
 Dam: VLYK1390 LAWSONS BARTEL E7 H811 K1390<sup>#</sup>  
 B/R AMBUSH 28<sup>#</sup>  
 LAWSONS AMBUSH E381<sup>#</sup>  
 LAWSONS GAR TANK B1194<sup>#</sup>

### Mid February 2024 TransTasman Angus Cattle Evaluation

TACE	Dir	Dtrs	GL	BW	200 W	400 W	600 W	MCW	Milk	SS	Doc
EBV	+1.6	+6.6	-4.0	+2.8	+47	+91	+120	+100	+14	+0.3	+16
ACC	66%	55%	83%	82%	83%	81%	81%	78%	73%	79%	76%

TACE	D t C	CWT	EMA	Rib	Rump	RBY	IMF	NFI-F	Claw	Angle	Leg
EBV	-3.9	+81	+2.6	+0.7	+1.6	+0.2	+2.3	+0.39	+1.10	+1.04	+1.12
ACC	42%	70%	70%	70%	71%	62%	74%	61%	71%	72%	67%

### Selection Indexes

\$A	\$A-L
\$196	\$340

**Traits Observed:** GL,BWT,400WT, Scan(EMA,Rib,Rump,IMF), Structure(Claw Set x 1, Foot Angle x 1), Genomics

Notes: On raw data scanning this bull was the highest on fat scores. Out of a huge capacity cow.

Purchaser: ..... \$: .....

## Lot 20

## KELLY ANGUS T681<sup>SV</sup>

## GXN22T681



DOB: 26/7/2022

Registration Status:APR

Genetic Status: AMFU,CAFU,DDFU,NHFU

AYRVALE BARTEL E7<sup>PV</sup>  
 AYRVALE HERCULES H9<sup>PV</sup>  
 LAWSONS INVINCIBLE F338<sup>SV</sup>  
 Sire: DXTP613 TEXAS POWERPLAY P613<sup>PV</sup>  
 BANGADANG WESTERN EXPRESS E10<sup>SV</sup>  
 TEXAS UNDINE H647<sup>SV</sup>  
 TEXAS UNDINE Z183<sup>PV</sup>

RENNYLEA EDMUND E11<sup>PV</sup>  
 LAWSONS PROSPERITY H382<sup>SV</sup>  
 LAWSONS OBJECTIVE E1025<sup>#</sup>  
 Dam: VLYL1374 LAWSONS PROSPERITY L1374<sup>#</sup>  
 B/R AMBUSH 28<sup>#</sup>  
 LAWSONS AMBUSH E351<sup>#</sup>  
 LAWSONS FAIR DINKUM B1191<sup>SV</sup>

### Mid February 2024 TransTasman Angus Cattle Evaluation

TACE	Dir	Dtrs	GL	BW	200 W	400 W	600 W	MCW	Milk	SS	Doc
EBV	+9.2	+9.0	-7.9	+0.0	+40	+80	+108	+88	+17	+0.9	+18
ACC	65%	54%	83%	82%	83%	81%	81%	77%	73%	79%	75%

TACE	D t C	CWT	EMA	Rib	Rump	RBY	IMF	NFI-F	Claw	Angle	Leg
EBV	-6.8	+64	+1.0	+1.7	+1.3	-0.6	+4.0	+0.76	+1.18	+1.06	+1.02
ACC	42%	69%	69%	69%	70%	61%	73%	60%	72%	72%	68%

### Selection Indexes

\$A	\$A-L
\$206	\$365

**Traits Observed:** BWT,400WT, Scan(EMA,Rib,Rump,IMF), Structure(Claw Set x 1, Foot Angle x 1), Genomics

Notes: A structurally correct Powerplay son that would be a perfect heifer option.

Purchaser: ..... \$: .....

## Lot 21

## KELLY ANGUS T679<sup>SV</sup>

## GXN22T679

DOB: 26/7/2022

Registration Status:HBR

Genetic Status: AMFU,CAFU,DDFU,NHFU

AYRVALE BARTEL E7<sup>PV</sup>  
 AYRVALE HERCULES H9<sup>PV</sup>  
 LAWSONS INVINCIBLE F338<sup>SV</sup>  
 Sire: DXTP613 TEXAS POWERPLAY P613<sup>PV</sup>  
 BANGADANG WESTERN EXPRESS E10<sup>SV</sup>  
 TEXAS UNDINE H647<sup>SV</sup>  
 TEXAS UNDINE Z183<sup>PV</sup>

CONNELLY FORWARD<sup>#</sup>  
 STERITA PARK BLACK JACK J231<sup>PV</sup>  
 SYDGEN FOREVER LADY 4413<sup>#</sup>  
 Dam: GXNM29 KELLY ANGUS BLACK JACK M29<sup>#</sup>  
 TOPBOS AMBASSADOR F4<sup>PV</sup>  
 LAWSONS AMBASSADOR J1174<sup>#</sup>  
 LAWSONS PREDESTINED B395 E1956<sup>#</sup>

### Mid February 2024 TransTasman Angus Cattle Evaluation

TACE	Dir	Dtrs	GL	BW	200 W	400 W	600 W	MCW	Milk	SS	Doc
EBV	-3.2	-0.9	-3.0	+3.6	+46	+80	+106	+85	+14	+1.8	-6
ACC	66%	55%	84%	82%	83%	81%	82%	78%	73%	80%	76%

TACE	D t C	CWT	EMA	Rib	Rump	RBY	IMF	NFI-F	Claw	Angle	Leg
EBV	-2.7	+68	+8.3	-1.7	-1.8	+1.0	+2.9	-0.06	+0.96	+0.92	+0.90
ACC	42%	70%	70%	70%	71%	62%	74%	61%	71%	72%	67%

### Selection Indexes

\$A	\$A-L
\$174	\$280

**Traits Observed:** GL,BWT,400WT, Scan(EMA,Rib,Rump,IMF), Structure(Claw Set x 1, Foot Angle x 1), Genomics

Notes: A slick skinned cow bull that is well put together.

Purchaser: ..... \$: .....

Top 10%

Top 20%

## Lot 22

## KELLY ANGUS T639<sup>SV</sup>

## GXN22T639



DOB: 18/7/2022

Registration Status: APR

Genetic Status: AMFU, CAFU, DDF, NHFU

AYRVALE BARTEL E7<sup>PV</sup>

MCC DAYBREAK<sup>#</sup>

AYRVALE HERCULES H9<sup>PV</sup>

G A R ANTICIPATION<sup>#</sup>

LAWSONS INVINCIBLE F338<sup>SV</sup>

G A R 5050 NEW DESIGN 0530<sup>#</sup>

Sire: DXTP613 TEXAS POWERPLAY P613<sup>PV</sup>

Dam: VLYL1200 LAWSONS ANTICIPATION L1200<sup>#</sup>

BANGADANG WESTERN EXPRESS E10<sup>SV</sup>

LAWSONS DINKY-DI Z191<sup>SV</sup>

TEXAS UNDINE H647<sup>SV</sup>

LAWSONS DINKY DI E576<sup>#</sup>

TEXAS UNDINE Z183<sup>PV</sup>

LAWSONS TANK A1212<sup>#</sup>

### Mid February 2024 TransTasman Angus Cattle Evaluation

TACE	Dir	Dtrs	GL	BW	200 W	400 W	600 W	MCW	Milk	SS	Doc
EBV	+7.9	+3.2	-4.7	+3.1	+48	+76	+109	+79	+14	+1.1	+9
ACC	65%	55%	83%	82%	83%	81%	81%	77%	73%	79%	76%

TACE	D t C	CWT	EMA	Rib	Rump	RBY	IMF	NFI-F	Claw	Angle	Leg
EBV	-3.5	+52	+4.5	-1.6	-0.6	+0.5	+1.9	-0.12	+0.90	+0.68	+0.94
ACC	43%	70%	70%	69%	70%	62%	74%	61%	73%	73%	69%

### Selection Indexes

\$A	\$A-L
\$190	\$317

**Traits Observed:** GL, BWT, 600WT, Scan(EMA, Rib, Rump, IMF), Structure(Claw Set x 1, Foot Angle x 1), Genomics

Notes: This Powerplay son was used over heifers, he is out of a cow that produces a top calf every year, 2 sons sold in previous sales averaging \$12000.

Purchaser: ..... \$: .....

## Lot 23

## KELLY ANGUS T686<sup>SV</sup>

## GXN22T686



DOB: 30/7/2022

Registration Status: APR

Genetic Status: AMFU, CAFU, DDF, NHFU

AYRVALE BARTEL E7<sup>PV</sup>

RENNYLEA EDMUND E11<sup>PV</sup>

AYRVALE HERCULES H9<sup>PV</sup>

LAWSONS PROSPERITY H382<sup>SV</sup>

LAWSONS INVINCIBLE F338<sup>SV</sup>

LAWSONS OBJECTIVE E1025<sup>#</sup>

Sire: DXTP613 TEXAS POWERPLAY P613<sup>PV</sup>

Dam: VLYL1194 LAWSONS PROSPERITY L1194<sup>#</sup>

BANGADANG WESTERN EXPRESS E10<sup>SV</sup>

G A R NEW DESIGN 5050<sup>#</sup>

TEXAS UNDINE H647<sup>SV</sup>

LAWSONS E627<sup>PV</sup>

TEXAS UNDINE Z183<sup>PV</sup>

LAWSONS TANK B426<sup>SV</sup>

### Mid February 2024 TransTasman Angus Cattle Evaluation

TACE	Dir	Dtrs	GL	BW	200 W	400 W	600 W	MCW	Milk	SS	Doc
EBV	+8.0	+8.3	-9.8	+0.3	+44	+86	+121	+110	+14	+0.3	+23
ACC	65%	54%	82%	82%	82%	81%	81%	77%	73%	79%	75%

TACE	D t C	CWT	EMA	Rib	Rump	RBY	IMF	NFI-F	Claw	Angle	Leg
EBV	-4.2	+74	+10.2	+0.8	+0.5	+0.6	+3.1	+0.92	+1.00	+0.92	+0.72
ACC	41%	69%	69%	69%	70%	61%	74%	60%	72%	72%	68%

### Selection Indexes

\$A	\$A-L
\$211	\$378

**Traits Observed:** BWT, 400WT, Scan(EMA, Rib, Rump, IMF), Structure(Claw Set x 1, Foot Angle x 1), Genomics

Notes: A heifer option that carries himself well with a nice phenotype.

Purchaser: ..... \$: .....

## Lot 24

## KELLY ANGUS T710<sup>SV</sup>

## GXN22T710



DOB: 14/8/2022

Registration Status: HBR

Genetic Status: AMFU, CAFU, DDFU, NHFU

AYRVALE BARTEL E7<sup>PV</sup>

TE MANIA BARTEL B219<sup>PV</sup>

AYRVALE HERCULES H9<sup>PV</sup>

AYRVALE BARTEL E7<sup>PV</sup>

LAWSONS INVINCIBLE F338<sup>SV</sup>

EAGLEHAWK JEDDA B32<sup>SV</sup>

Sire: DXTP613 TEXAS POWERPLAY P613<sup>PV</sup>

Dam: VLYK1590 LAWSONS BARTEL E7 K1590<sup>#</sup>

BANGADANG WESTERN EXPRESS E10<sup>SV</sup>

LAWSONS TANK X1235<sup>#</sup>

TEXAS UNDINE H647<sup>SV</sup>

LAWSONS TANK F862<sup>#</sup>

TEXAS UNDINE Z183<sup>PV</sup>

LAWSONS ROCKY W129 A809<sup>PV</sup>

### Mid February 2024 TransTasman Angus Cattle Evaluation

TACE	Dir	Dtrs	GL	BW	200 W	400 W	600 W	MCW	Milk	SS	Doc
EBV	+5.7	+5.6	-4.9	+2.2	+51	+89	+118	+94	+10	+1.6	+26
ACC	66%	56%	83%	82%	83%	81%	82%	78%	74%	80%	76%

TACE	D t C	CWT	EMA	Rib	Rump	RBY	IMF	NFI-F	Claw	Angle	Leg
EBV	-4.1	+69	+11.9	-1.2	-0.5	+0.6	+2.1	+0.13	+1.08	+1.04	+0.90
ACC	44%	70%	70%	70%	71%	62%	74%	61%	72%	73%	68%

### Selection Indexes

\$A	\$A-L
\$220	\$371

**Traits Observed:** BWT, 400WT, Scan(EMA, Rib, Rump, IMF), Structure(Claw Set x 1, Foot Angle x 1), Genomics

Notes: The Powerplay sons are a great line this year. This great looking fella scanned at the top end of the group for EMA.

Purchaser: ..... \$: .....

Top 10%

Top 20%



LOT 24  
KELLY ANGUS T710sv



LOT 33  
KELLY ANGUS T670pv



LOT 41  
KELLY ANGUS T712sv



LOT 51  
KELLY ANGUS T740pv



## Lot 25

## KELLY ANGUS T669<sup>SV</sup>

## GXN22T669



DOB: 22/7/2022 Registration Status: APR  
 G A R EARLY BIRD<sup>#</sup>  
 G A R ASHLAND<sup>PV</sup>  
 CHAIR ROCK AMBUSH 1018<sup>#</sup>  
 Sire: USA19266718 G A R HOME TOWN<sup>PV</sup>  
 G A R SURE FIRE<sup>SV</sup>  
 CHAIR ROCK SURE FIRE 6095<sup>#</sup>  
 CHAIR ROCK PROGRESS 3005<sup>#</sup>

Genetic Status: AMC,CAFU,DDFU,NHFU  
 CONNEALY IN SURE 8524<sup>#</sup>  
 G A R SURE FIRE<sup>SV</sup>  
 CHAIR ROCK 5050 G A R 8086<sup>#</sup>  
 Dam: VLYL1271 LAWSONS SURE FIRE L1271<sup>#</sup>  
 LAWSONS TANK B1155<sup>PV</sup>  
 LAWSONS TANK B1155 G274<sup>#</sup>  
 LAWSONS TOTAL E459<sup>#</sup>

### Mid February 2024 TransTasman Angus Cattle Evaluation

TACE	Dir	Dtrs	GL	BW	200 W	400 W	600 W	MCW	Milk	SS	Doc
EBV	+4.4	-0.5	-4.8	+2.0	+54	+96	+113	+78	+23	+1.5	+23
ACC	71%	62%	84%	83%	84%	83%	83%	80%	76%	81%	79%
TACE	D t C	CWT	EMA	Rib	Rump	RBV	IMF	NFI-F	Claw	Angle	Leg
EBV	-5.4	+69	+13.1	-2.7	-4.2	+1.4	+3.6	-0.18	+1.06	+0.88	+0.86
ACC	46%	74%	73%	73%	74%	67%	77%	65%	70%	70%	65%

### Selection Indexes

\$A	\$A-L
\$260	\$396

Traits Observed: GL,BWT,Genomics

Notes: This Hometown/Surefire cross a growthy bull with plenty of carcase and depth of body.

Purchaser: ..... \$:

## Lot 26

## KELLY ANGUS T721<sup>PV</sup>

## GXN22T721



DOB: 27/8/2022 Registration Status: HBR  
 CONNEALY BLACK GRANITE<sup>#</sup>  
 QHF WWA BLACK ONYX 5Q11<sup>SV</sup>  
 WILKS BLACKCAP 0D82<sup>#</sup>  
 Sire: GXNQ209 KELLY ANGUS QUINN Q209<sup>SV</sup>  
 G A R PROPHET<sup>SV</sup>  
 LAWSONS PROPHET L1327<sup>#</sup>  
 LAWSONS BARTEL E7 J1127<sup>#</sup>

Genetic Status: AMFU,CAFU,DDFU,NHFU  
 RENNYLEA EDMUND E11<sup>PV</sup>  
 RENNYLEA KODAK K522<sup>SV</sup>  
 RENNYLEA EISA ERICA F810<sup>#</sup>  
 Dam: GXNP71 KELLY ANGUS KODAK P71<sup>SV</sup>  
 LAWSONS INCREDIBLE H803<sup>PV</sup>  
 LAWSONS INCREDIBLE L1361<sup>#</sup>  
 LAWSONS AMBASSADOR J1258<sup>#</sup>

### Mid February 2024 TransTasman Angus Cattle Evaluation

TACE	Dir	Dtrs	GL	BW	200 W	400 W	600 W	MCW	Milk	SS	Doc
EBV	+8.7	+9.2	-7.4	+0.5	+54	+97	+134	+118	+26	+3.3	+22
ACC	65%	54%	82%	82%	82%	81%	81%	78%	73%	78%	75%
TACE	D t C	CWT	EMA	Rib	Rump	RBV	IMF	NFI-F	Claw	Angle	Leg
EBV	-8.2	+79	+4.5	-1.8	-3.8	-0.4	+5.3	-0.35	+1.08	+1.16	+1.18
ACC	40%	70%	69%	69%	70%	61%	74%	61%	71%	72%	67%

### Selection Indexes

\$A	\$A-L
\$245	\$435

Traits Observed: BWT,400WT, Scan(EMA,Rib,Rump,IMF), Structure(Claw Set x 1, Foot Angle x 1), Genomics

Notes: Q209 throws plenty of calving ease and a low birth weight. A great heifer option.

Purchaser: ..... \$:

## Lot 27

## KELLY ANGUS T735<sup>SV</sup>

## GXN22T735



DOB: 5/9/2022 Registration Status: APR  
 CONNEALY BLACK GRANITE<sup>#</sup>  
 QHF WWA BLACK ONYX 5Q11<sup>SV</sup>  
 WILKS BLACKCAP 0D82<sup>#</sup>  
 Sire: GXNQ209 KELLY ANGUS QUINN Q209<sup>SV</sup>  
 G A R PROPHET<sup>SV</sup>  
 LAWSONS PROPHET L1327<sup>#</sup>  
 LAWSONS BARTEL E7 J1127<sup>#</sup>

Genetic Status: AMFU,CAFU,DDFU,NHFU  
 C R A BEXTOR 872 5205 608<sup>#</sup>  
 G A R PROPHET<sup>SV</sup>  
 G A R OBJECTIVE 1885<sup>#</sup>  
 Dam: GXNM6 KELLY ANGUS PROPHET M6<sup>#</sup>  
 AYRVALE BARTEL E7<sup>PV</sup>  
 LAWSONS BARTEL E7 J1196<sup>#</sup>  
 LAWSONS TANK F864<sup>#</sup>

### Mid February 2024 TransTasman Angus Cattle Evaluation

TACE	Dir	Dtrs	GL	BW	200 W	400 W	600 W	MCW	Milk	SS	Doc
EBV	+10.0	+11.1	-3.1	+0.2	+52	+91	+113	+58	+26	+1.0	+10
ACC	67%	57%	83%	82%	83%	81%	81%	78%	74%	79%	76%
TACE	D t C	CWT	EMA	Rib	Rump	RBV	IMF	NFI-F	Claw	Angle	Leg
EBV	-6.9	+76	+5.2	-0.8	-2.0	+0.5	+2.2	-0.04	+0.98	+1.00	+1.20
ACC	44%	71%	70%	70%	71%	63%	75%	63%	71%	71%	66%

### Selection Indexes

\$A	\$A-L
\$262	\$406

Traits Observed: BWT,400WT, Scan(EMA,Rib,Rump,IMF), Structure(Claw Set x 1, Foot Angle x 1), Genomics

Notes: Just like his sire, T735 is as quiet as a lamb with a great top in him. Out of a cow that weans a heavy calf every year. A genuine heifer bull that does not compromise on growth.

Purchaser: ..... \$:

Top 10%

Top 20%

## Lot 28

## KELLY ANGUS T732<sup>PV</sup>

## GXN22T732



DOB: 7/9/2022 Registration Status: APR Genetic Status: AM10%,CAFU,DDFU,NHFU  
 CONNEALY BLACK GRANITE# SYDGEN C C & 7#  
 QHF WWA BLACK ONYX 5Q11<sup>SV</sup> T C A VISIONARY 158<sup>SV</sup>  
 WILKS BLACKCAP 0D82# T C A TREASURE 0699 601#  
 Sire: GXNQ209 KELLY ANGUS QUINN Q209<sup>SV</sup> Dam: GXNP115 KELLY ANGUS VISIONARY P115<sup>SV</sup>  
 G A R PROPHET<sup>SV</sup> YTHANBRAE HENRY VIII U8<sup>SV</sup>  
 LAWSONS PROPHET L1327# LAWSONS HENRY VIII F8095#  
 LAWSONS BARTEL E7 J1127# LAWSONS CASPER B8022#

### Mid February 2024 TransTasman Angus Cattle Evaluation

TACE	Dir	Dtrs	GL	BW	200 W	400 W	600 W	MCW	Milk	SS	Doc
EBV	+5.9	+3.1	-4.0	+2.3	+57	+101	+125	+78	+29	+1.0	+18
ACC	64%	53%	82%	81%	82%	80%	80%	77%	72%	78%	74%

TACE	D t C	CWT	EMA	Rib	Rump	RBY	IMF	NFI-F	Claw	Angle	Leg
EBV	-8.7	+86	+8.4	-0.1	-0.6	+1.1	+1.2	-0.26	+1.08	+1.12	+1.06
ACC	40%	69%	69%	68%	69%	60%	73%	59%	72%	72%	67%

### Selection Indexes

\$A	\$A-L
\$287	\$443

**Traits Observed:** BWT,400WT, Scan(EMA,Rib,Rump,IMF), Structure(Claw Set x 1, Foot Angle x 1), Genomics

Notes: All of our Q209 sons are moderate meat machines and this guy is no exception. Top figures, check out his calving ease and growth.

Purchaser: ..... \$:

## Lot 29

## KELLY ANGUS T682<sup>PV</sup>

## GXN22T682



DOB: 2/8/2022 Registration Status: APR Genetic Status: AMFU,CAFU,DDFU,NHFU  
 ARDROSSAN EQUATOR A241<sup>PV</sup> AYRVALE BARTEL E7<sup>PV</sup>  
 BOWMONT JACKPOT J310<sup>PV</sup> AYRVALE HERCULES H9<sup>PV</sup>  
 ARDROSSAN WILCOOLA Z31<sup>PV</sup> LAWSONS INVINCIBLE F338<sup>SV</sup>  
 Sire: NHZM584 HAZELDEAN M584<sup>PV</sup> Dam: GXNP45 KELLY ANGUS HERCULES P45<sup>SV</sup>  
 TE MANIA BERKLEY B1<sup>PV</sup> DUNOON GOODTHING G167<sup>PV</sup>  
 HAZELDEAN G38<sup>PV</sup> LAWSONS GOODTHING K1512#  
 HAZELDEAN A90<sup>SV</sup> LAWSONS BARTEL E7 H1060#

### Mid February 2024 TransTasman Angus Cattle Evaluation

TACE	Dir	Dtrs	GL	BW	200 W	400 W	600 W	MCW	Milk	SS	Doc
EBV	+7.7	+7.7	-8.7	+2.3	+48	+80	+105	+56	+19	+3.5	+30
ACC	66%	58%	82%	82%	83%	81%	81%	78%	74%	79%	76%

TACE	D t C	CWT	EMA	Rib	Rump	RBY	IMF	NFI-F	Claw	Angle	Leg
EBV	-5.8	+63	+11.3	+1.6	+1.6	+0.9	+2.5	+0.36	+0.72	+1.08	+1.08
ACC	45%	71%	71%	70%	71%	63%	75%	63%	72%	72%	69%

### Selection Indexes

\$A	\$A-L
\$258	\$393

**Traits Observed:** BWT,400WT, Scan(EMA,Rib,Rump,IMF), Structure(Claw Set x 1, Foot Angle x 1), Genomics

Notes: Jackpot M584 has sired many calves here at KA and at 7 years of age he is still working. T682 is a very complete bull out of a great cow line.

Purchaser: ..... \$:

## Lot 30

## KELLY ANGUS T698<sup>SV</sup>

## GXN22T698



DOB: 7/8/2022 Registration Status: APR Genetic Status: AMFU,CAFU,DDF,NHFU  
 ARDROSSAN EQUATOR A241<sup>PV</sup> LAWSONS TANK X1235#  
 BOWMONT JACKPOT J310<sup>PV</sup> LAWSONS TANK B1155<sup>PV</sup>  
 ARDROSSAN WILCOOLA Z31<sup>PV</sup> LAWSONS NEW DESIGN 1407 Z1393<sup>SV</sup>  
 Sire: NHZM584 HAZELDEAN M584<sup>PV</sup> Dam: VLYG300 LAWSONS TANK B1155 G300#  
 TE MANIA BERKLEY B1<sup>PV</sup> LAWSONS DINKY-DI Z191<sup>SV</sup>  
 HAZELDEAN G38<sup>PV</sup> LAWSONS DINKY DI E831#  
 HAZELDEAN A90<sup>SV</sup> LAWSONS HENRY VIII Z1126#

### Mid February 2024 TransTasman Angus Cattle Evaluation

TACE	Dir	Dtrs	GL	BW	200 W	400 W	600 W	MCW	Milk	SS	Doc
EBV	+8.3	+9.2	-0.8	-0.1	+47	+88	+109	+101	+11	+1.1	+15
ACC	64%	55%	81%	81%	82%	80%	81%	78%	73%	78%	75%

TACE	D t C	CWT	EMA	Rib	Rump	RBY	IMF	NFI-F	Claw	Angle	Leg
EBV	-6.5	+59	+1.0	+2.4	+1.9	-0.4	+3.2	-0.37	+0.86	+0.96	+0.82
ACC	44%	70%	70%	69%	71%	61%	74%	61%	73%	73%	69%

### Selection Indexes

\$A	\$A-L
\$215	\$387

**Traits Observed:** BWT,400WT, Scan(EMA,Rib,Rump,IMF), Structure(Claw Set x 1, Foot Angle x 1), Genomics

Notes: T698 has longevity in his pedigree. His dam is still breeding in the herd at 11 and sired by Jackpot M584.

Purchaser: ..... \$:

Top 10%

Top 20%

## Lot 31

## KELLY ANGUS T672<sup>PV</sup>

## GXN22T672



DOB: 24/7/2022

Registration Status:HBR

Genetic Status: AMFU,CAFU,DDFU,NHFU

G A R PROGRESS<sup>SV</sup>  
G A R MOMENTUM<sup>PV</sup>  
G A R BIG EYE 1770<sup>#</sup>  
Sire: VLYR4010 LAWSONS ROCKY R4010<sup>PV</sup>  
PARINGA JUDD J5<sup>PV</sup>  
LAWSONS JUDD P4005<sup>SV</sup>  
LAWSONS PROPHET M4047<sup>#</sup>

BOWMONT JACKPOT J310<sup>PV</sup>  
HAZELDEAN M584<sup>PV</sup>  
HAZELDEAN G38<sup>PV</sup>  
Dam: GXNQ57 KELLY ANGUS JACKPOT Q57<sup>SV</sup>  
B/R AMBUSH 28<sup>#</sup>  
LAWSONS AMBUSH E308<sup>#</sup>  
LAWSONS NEW DESIGN 1407 B1279<sup>#</sup>

### Mid February 2024 TransTasman Angus Cattle Evaluation

TACE	Dir	Dtrs	GL	BW	200 W	400 W	600 W	MCW	Milk	SS	Doc
EBV	+5.2	+8.1	-0.4	+1.8	+39	+66	+84	+61	+22	+1.8	+16
ACC	65%	54%	83%	82%	83%	81%	81%	77%	73%	79%	77%
TACE	D t C	CWT	EMA	Rib	Rump	RBV	IMF	NFI-F	Claw	Angle	Leg
EBV	-6.0	+43	+9.0	-2.1	-2.7	+1.0	+4.7	+0.90	+0.64	+0.96	+1.16
ACC	42%	69%	70%	69%	70%	61%	74%	60%	74%	74%	70%

### Selection Indexes

\$A	\$A-L
\$222	\$346

**Traits Observed:** GL,BWT,400WT, Scan(EMA,Rib,Rump,IMF), Structure(Claw Set x 1, Foot Angle x 1), Genomics

Notes: T672 has a beautiful skin type and is very good footed.

Purchaser: ..... \$: .....

## Lot 32

## KELLY ANGUS T666<sup>PV</sup>

## GXN22T666



DOB: 22/7/2022

Registration Status:APR

Genetic Status: AMFU,CAFU,DDFU,NHFU

G A R PROGRESS<sup>SV</sup>  
G A R MOMENTUM<sup>PV</sup>  
G A R BIG EYE 1770<sup>#</sup>  
Sire: VLYR4010 LAWSONS ROCKY R4010<sup>PV</sup>  
PARINGA JUDD J5<sup>PV</sup>  
LAWSONS JUDD P4005<sup>SV</sup>  
LAWSONS PROPHET M4047<sup>#</sup>

CONNEALY BLACK GRANITE<sup>#</sup>  
QHf WWA BLACK ONYX 5Q11<sup>SV</sup>  
WILKS BLACKCAP 0D82<sup>#</sup>  
Dam: GXNQ54 KELLY ANGUS ONYX Q54<sup>PV</sup>  
LAWSONS SURE FIRE L1187<sup>SV</sup>  
KELLY ANGUS SF L1187 N134<sup>SV</sup>  
LAWSONS BARTEL E7 K1474<sup>#</sup>

### Mid February 2024 TransTasman Angus Cattle Evaluation

TACE	Dir	Dtrs	GL	BW	200 W	400 W	600 W	MCW	Milk	SS	Doc
EBV	+6.6	+5.0	-2.7	+2.5	+47	+78	+99	+61	+26	+1.0	+15
ACC	66%	55%	83%	82%	83%	82%	82%	78%	73%	80%	78%
TACE	D t C	CWT	EMA	Rib	Rump	RBV	IMF	NFI-F	Claw	Angle	Leg
EBV	-5.6	+61	+11.6	+0.8	+1.4	+0.6	+2.1	+0.26	+0.86	+0.98	+0.96
ACC	42%	70%	70%	70%	71%	62%	74%	61%	73%	74%	69%

### Selection Indexes

\$A	\$A-L
\$237	\$365

**Traits Observed:** GL,BWT,400WT, Scan(EMA,Rib,Rump,IMF), Structure(Claw Set x 1, Foot Angle x 1), Genomics

Notes: This larger framed Rocky son has always been in the top end of the group. Plenty of weight and depth of body in this guy.

Purchaser: ..... \$: .....

## Lot 33

## KELLY ANGUS T670<sup>PV</sup>

## GXN22T670



DOB: 24/7/2022

Registration Status:HBR

Genetic Status: AMFU,CAFU,DDFU,NHFU

G A R PROGRESS<sup>SV</sup>  
G A R MOMENTUM<sup>PV</sup>  
G A R BIG EYE 1770<sup>#</sup>  
Sire: VLYR4010 LAWSONS ROCKY R4010<sup>PV</sup>  
PARINGA JUDD J5<sup>PV</sup>  
LAWSONS JUDD P4005<sup>SV</sup>  
LAWSONS PROPHET M4047<sup>#</sup>

BOWMONT JACKPOT J310<sup>PV</sup>  
HAZELDEAN M584<sup>PV</sup>  
HAZELDEAN G38<sup>PV</sup>  
Dam: GXNR103 KELLY ANGUS JACKPOT R103<sup>SV</sup>  
LAWSONS DINKY-DI Z191<sup>SV</sup>  
LAWSONS DINKY DI E282<sup>#</sup>  
LAWSONS PREDESTINED B501<sup>#</sup>

### Mid February 2024 TransTasman Angus Cattle Evaluation

TACE	Dir	Dtrs	GL	BW	200 W	400 W	600 W	MCW	Milk	SS	Doc
EBV	+4.0	+4.5	-2.0	+2.7	+50	+91	+123	+85	+25	+1.0	+34
ACC	66%	56%	83%	82%	83%	81%	81%	78%	73%	80%	78%
TACE	D t C	CWT	EMA	Rib	Rump	RBV	IMF	NFI-F	Claw	Angle	Leg
EBV	-5.9	+80	+4.5	+0.3	-0.3	+0.1	+3.1	+0.30	+0.62	+1.16	+1.04
ACC	43%	70%	70%	70%	71%	62%	75%	62%	72%	72%	69%

### Selection Indexes

\$A	\$A-L
\$231	\$374

**Traits Observed:** GL,BWT,400WT, Scan(EMA,Rib,Rump,IMF), Structure(Claw Set x 1, Foot Angle x 1), Genomics

Notes: A Rocky son out of a heifer. A soft easy doing bull with plenty of length.

Purchaser: ..... \$: .....

Top 10%

Top 20%

## Lot 34 KELLY ANGUS T636<sup>PV</sup> GXN22T636

DOB: 16/7/2022 Registration Status: APR Genetic Status: AMF,CAFU,DDFU,NHFU  
 G A R PROGRESS<sup>SV</sup> ALLOURA GET CRACKING G10<sup>SV</sup>  
 G A R MOMENTUM<sup>PV</sup> KELLY ANGUS GET CRACKING P297<sup>SV</sup>  
 G A R BIG EYE 1770<sup>#</sup> LAWSONS EQUATOR E248<sup>#</sup>  
 Sire: VLYR4010 LAWSONS ROCKY R4010<sup>PV</sup> Dam: GXNR157 KELLY ANGUS R157<sup>SV</sup>  
 PARINGA JUDD J5<sup>PV</sup> G A R SURE FIRE<sup>SV</sup>  
 LAWSONS JUDD P4005<sup>SV</sup> LAWSONS SURE FIRE L1271<sup>#</sup>  
 LAWSONS PROPHET M4047<sup>#</sup> LAWSONS TANK B1155 G274<sup>#</sup>

### Mid February 2024 TransTasman Angus Cattle Evaluation

TACE	Dir	Dtrs	GL	BW	200 W	400 W	600 W	MCW	Milk	SS	Doc
EBV	-1.5	+1.5	-5.9	+4.0	+45	+79	+98	+67	+20	+1.7	+35
ACC	65%	54%	82%	82%	83%	81%	81%	77%	72%	79%	77%
TACE	D t C	CWT	EMA	Rib	Rump	RBY	IMF	NFI-F	Claw	Angle	Leg
EBV	-3.9	+53	+13.3	+1.9	+2.0	-0.2	+6.1	+0.74	+0.96	+1.00	+0.96
ACC	41%	69%	69%	68%	70%	60%	73%	60%	73%	73%	70%

### Selection Indexes

\$A	\$A-L
\$222	\$332

**Traits Observed:** GL,BWT,400WT, Scan(EMA,Rib,Rump,IMF), Structure(Claw Set x 1, Foot Angle x 1), Genomics

Notes: Another Rocky son out of a heifer. More suited to cows with a fantastic carcass.

Purchaser: ..... \$: .....

## Lot 35 KELLY ANGUS T637<sup>PV</sup> GXN22T637



DOB: 18/7/2022 Registration Status: HBR Genetic Status: AMFU,CAFU,DDFU,NHFU  
 G A R PROGRESS<sup>SV</sup> SYDGEN C C & 7<sup>#</sup>  
 G A R MOMENTUM<sup>PV</sup> T C A VISIONARY 158<sup>SV</sup>  
 G A R BIG EYE 1770<sup>#</sup> T C A TREASURE 0699 601<sup>#</sup>  
 Sire: VLYR4010 LAWSONS ROCKY R4010<sup>PV</sup> Dam: GXNP68 KELLY ANGUS VISIONARY P68<sup>SV</sup>  
 PARINGA JUDD J5<sup>PV</sup> LAWSONS INVINCIBLE C402<sup>PV</sup>  
 LAWSONS JUDD P4005<sup>SV</sup> LAWSONS INVINCIBLE G440<sup>#</sup>  
 LAWSONS PROPHET M4047<sup>#</sup> LAWSONS TANK E475<sup>#</sup>

### Mid February 2024 TransTasman Angus Cattle Evaluation

TACE	Dir	Dtrs	GL	BW	200 W	400 W	600 W	MCW	Milk	SS	Doc
EBV	+7.0	+4.2	-7.7	+0.8	+44	+75	+101	+71	+20	+2.2	+20
ACC	67%	56%	83%	82%	83%	82%	81%	78%	74%	80%	78%
TACE	D t C	CWT	EMA	Rib	Rump	RBY	IMF	NFI-F	Claw	Angle	Leg
EBV	-4.8	+61	+10.6	+1.3	+1.4	+0.4	+2.9	+1.16	+1.08	+1.08	+1.20
ACC	43%	70%	70%	70%	71%	62%	74%	62%	74%	74%	70%

### Selection Indexes

\$A	\$A-L
\$216	\$349

**Traits Observed:** GL,BWT,400WT, Scan(EMA,Rib,Rump,IMF), Structure(Claw Set x 1, Foot Angle x 1), Genomics

Notes: T637 is out of a highly fertile cow who has calved to AI every year. A bull that can easily be used over heifers.

Purchaser: ..... \$: .....

## Lot 36 KELLY ANGUS T665<sup>PV</sup> GXN22T665



DOB: 22/7/2022 Registration Status: HBR Genetic Status: AMFU,CAFU,DDF,NHFU  
 G A R PROGRESS<sup>SV</sup> RENNYLEA KODAK K522<sup>SV</sup>  
 G A R MOMENTUM<sup>PV</sup> KELLY ANGUS KODAK P210<sup>PV</sup>  
 G A R BIG EYE 1770<sup>#</sup> LAWSONS AMBASSADOR J1246<sup>SV</sup>  
 Sire: VLYR4010 LAWSONS ROCKY R4010<sup>PV</sup> Dam: GXNR91 KELLY ANGUS KODAK R91<sup>SV</sup>  
 PARINGA JUDD J5<sup>PV</sup> TOPBOS AMBASSADOR F4<sup>PV</sup>  
 LAWSONS JUDD P4005<sup>SV</sup> LAWSONS AMBASSADOR J1327<sup>SV</sup>  
 LAWSONS PROPHET M4047<sup>#</sup> LAWSONS NEW DAY G350<sup>#</sup>

### Mid February 2024 TransTasman Angus Cattle Evaluation

TACE	Dir	Dtrs	GL	BW	200 W	400 W	600 W	MCW	Milk	SS	Doc
EBV	+5.3	+2.9	-4.9	+3.1	+57	+90	+122	+107	+19	+2.6	+14
ACC	66%	56%	83%	82%	83%	81%	81%	78%	73%	80%	78%
TACE	D t C	CWT	EMA	Rib	Rump	RBY	IMF	NFI-F	Claw	Angle	Leg
EBV	-7.2	+68	+5.1	-0.2	-1.0	-0.4	+6.5	+0.45	+1.02	+1.04	+1.08
ACC	43%	70%	71%	70%	71%	62%	75%	62%	73%	73%	70%

### Selection Indexes

\$A	\$A-L
\$257	\$423

**Traits Observed:** GL,BWT,600WT, Scan(EMA,Rib,Rump,IMF), Structure(Claw Set x 1, Foot Angle x 1), Genomics

Notes: A high-ranking Rocky son with plenty of Growth and Muscle.

Purchaser: ..... \$: .....

Top 10% Top 20%

## Lot 37 KELLY ANGUS T708<sup>PV</sup> GXN22T708

DOB: 13/8/2022 Registration Status:HBR Genetic Status: AMFU,CAFU,DDFU,NHFU

G A R PROGRESS<sup>SV</sup> AYRVALE BARTEL E7<sup>PV</sup>  
 G A R MOMENTUM<sup>PV</sup> LAWSONS INCREDIBLE H803<sup>PV</sup>  
 G A R BIG EYE 1770# LAWSONS DINKY DI E447<sup>PV</sup>  
 Sire: USA19570738 G A R TRANSCENDENT<sup>PV</sup> Dam: GXNN87 KELLY ANGUS INCREDIBLE N87<sup>SV</sup>  
 G A R PROPHET<sup>SV</sup> LAWSONS INVINCIBLE C402<sup>PV</sup>  
 G A R PROPHET 2685# LAWSONS INVINCIBLE G1785#  
 G A R DAYBREAK 2842# LAWSONS DIRECTION X3 B507#

### Mid February 2024 TransTasman Angus Cattle Evaluation

TACE	Dir	Dtrs	GL	BW	200 W	400 W	600 W	MCW	Milk	SS	Doc
EBV	-4.4	+2.5	-4.0	+4.5	+50	+86	+97	+72	+11	+1.1	+1
ACC	66%	56%	83%	82%	83%	81%	81%	78%	74%	79%	75%
TACE	D t C	CWT	EMA	Rib	Rump	RBY	IMF	NFI-F	Claw	Angle	Leg
EBV	-3.7	+54	+17.0	-2.2	-4.2	+1.2	+6.3	+0.32	+0.94	+0.78	+0.98
ACC	44%	71%	70%	70%	71%	62%	75%	62%	74%	74%	67%

### Selection Indexes

\$A	\$A-L
\$240	\$348

**Traits Observed:** GL,BWT,400WT, Scan(EMA,Rib,Rump,IMF), Structure(Claw Set x 1, Foot Angle x 1), Genomics

Notes: This bull is a fantastic cow bull if you are looking to add carcass into your cow herd.

Purchaser: ..... \$: .....

## Lot 38 KELLY ANGUS T631<sup>PV</sup> GXN22T631



DOB: 15/7/2022 Registration Status:HBR Genetic Status: AMFU,CAFU,DDFU,NHFU

G A R PROGRESS<sup>SV</sup> H P C A INTENSITY#  
 G A R MOMENTUM<sup>PV</sup> LAWSONS INTENSITY L199<sup>PV</sup>  
 G A R BIG EYE 1770# LAWSONS BARTEL E7 J252<sup>PV</sup>  
 Sire: USA19570738 G A R TRANSCENDENT<sup>PV</sup> Dam: GXNP53 KELLY ANGUS INTENSITY L199<sup>SV</sup>  
 G A R PROPHET<sup>SV</sup> LAWSONS HENRY VIII D1054<sup>PV</sup>  
 G A R PROPHET 2685# LAWSONS HENRY D1054 J1260#  
 G A R DAYBREAK 2842# LAWSONS INVINCIBLE G436#

### Mid February 2024 TransTasman Angus Cattle Evaluation

TACE	Dir	Dtrs	GL	BW	200 W	400 W	600 W	MCW	Milk	SS	Doc
EBV	+5.0	+6.1	-9.1	+2.0	+44	+84	+107	+82	+13	+1.6	+25
ACC	67%	57%	83%	82%	83%	82%	82%	79%	75%	80%	76%
TACE	D t C	CWT	EMA	Rib	Rump	RBY	IMF	NFI-F	Claw	Angle	Leg
EBV	-5.8	+49	+14.0	-1.4	-2.3	+0.3	+6.9	+0.73	+1.10	+0.98	+0.92
ACC	44%	72%	71%	71%	71%	63%	76%	63%	72%	72%	66%

### Selection Indexes

\$A	\$A-L
\$254	\$403

**Traits Observed:** GL,BWT,400WT, Scan(EMA,Rib,Rump,IMF), Structure(Claw Set x 1, Foot Angle x 1), Genomics

Notes: A Transendant son whose raw data for IMF topped the group. If you are wanting to improve carcass in your herd check this guy out.

Purchaser: ..... \$: .....

## Lot 39 KELLY ANGUS T684<sup>SV</sup> GXN22T684

DOB: 26/7/2022 Registration Status:HBR Genetic Status: AMFU,CAFU,DDFU,NHFU

G A R PROGRESS<sup>SV</sup> TUWHARETOA REGENT D145<sup>PV</sup>  
 G A R MOMENTUM<sup>PV</sup> PARINGA JUDD J5<sup>PV</sup>  
 G A R BIG EYE 1770# STRATHWEN BERKLEY WILPENA F30<sup>PV</sup>  
 Sire: USA19570738 G A R TRANSCENDENT<sup>PV</sup> Dam: GXNM61 KELLY ANGUS JUDD M61#  
 G A R PROPHET<sup>SV</sup> YTHANBRAE HENRY VIII U8<sup>SV</sup>  
 G A R PROPHET 2685# LAWSONS HENRY VIII H8161#  
 G A R DAYBREAK 2842# LAWSONS HENRY VIII Y1400#

### Mid February 2024 TransTasman Angus Cattle Evaluation

TACE	Dir	Dtrs	GL	BW	200 W	400 W	600 W	MCW	Milk	SS	Doc
EBV	+1.8	+3.4	-1.4	+5.0	+51	+90	+125	+143	+16	+1.6	+14
ACC	65%	56%	83%	82%	82%	81%	81%	78%	73%	79%	74%
TACE	D t C	CWT	EMA	Rib	Rump	RBY	IMF	NFI-F	Claw	Angle	Leg
EBV	-4.0	+63	+11.6	-1.3	-3.2	+1.2	+4.5	+0.04	+0.76	+0.78	+0.82
ACC	43%	71%	70%	70%	70%	62%	75%	61%	73%	73%	67%

### Selection Indexes

\$A	\$A-L
\$203	\$373

**Traits Observed:** GL,BWT,600WT, Scan(EMA,Rib,Rump,IMF), Structure(Claw Set x 1, Foot Angle x 1), Genomics

Notes: T684 is a bull with a lot of capacity that will grow out into a heavy bull. A bull with plenty of carcass that was used as a back up to AI.

Purchaser: ..... \$: .....

Top 10% Top 20%



## Lot 40 KELLY ANGUS T662<sup>SV</sup> GXN22T662

DOB: 21/7/2022 Registration Status:HBR Genetic Status: AMF,CAFU,DDFU,NHFU  
 G A R PROGRESS<sup>SV</sup> TUWHARETOA REGENT D145<sup>PV</sup>  
 G A R MOMENTUM<sup>PV</sup> PARINGA JUDD J5<sup>PV</sup>  
 G A R BIG EYE 1770# STRATHEWEN BERKLEY WILPENA F30<sup>PV</sup>  
 Sire: USA19570738 G A R TRANSCENDENT<sup>PV</sup> Dam: GXNM52 KELLY ANGUS JUDD M52#  
 G A R PROPHET<sup>SV</sup> LAWSONS NOVAK E313<sup>SV</sup>  
 G A R PROPHET 2685# LAWSONS NOVAK H972#  
 G A R DAYBREAK 2842# LAWSONS ULTIMATE F613#

### Mid February 2024 TransTasman Angus Cattle Evaluation

TACE	Dir	Dtrs	GL	BW	200 W	400 W	600 W	MCW	Milk	SS	Doc
EBV	+0.3	+2.7	-3.8	+4.4	+56	+106	+140	+114	+23	+0.4	+36
ACC	65%	56%	83%	82%	82%	81%	81%	77%	73%	79%	74%

TACE	D t C	CWT	EMA	Rib	Rump	RBY	IMF	NFI-F	Claw	Angle	Leg
EBV	-4.1	+83	+9.4	-2.8	-4.5	+0.6	+3.0	-0.15	+1.06	+0.86	+0.80
ACC	43%	71%	70%	70%	70%	62%	75%	62%	75%	75%	69%

### Selection Indexes

\$A	\$A-L
\$217	\$369

**Traits Observed:** GL,BWT,600WT, Scan(EMA,Rib,Rump,IMF), Structure(Claw Set x 1, Foot Angle x 1), Genomics

Notes: Another bull we used in herd, out of a Judd daughter we think very highly of.

Purchaser:.....\$:

## Lot 41 KELLY ANGUS T712<sup>PV</sup> GXN22T712

DOB: 17/8/2022 Registration Status:HBR Genetic Status: AMFU,CAFU,DDFU,NHFU  
 AYRVALE BARTEL E7<sup>PV</sup> CONNEALY BLACK GRANITE#  
 AYRVALE HERCULES H9<sup>PV</sup> QHF WWA BLACK ONYX 5Q11<sup>SV</sup>  
 LAWSONS INVINCIBLE F338<sup>SV</sup> WILKS BLACKCAP 0D82#  
 Sire: DXTP613 TEXAS POWERPLAY P613<sup>PV</sup> Dam: GXNQ66 KELLY ANGUS ONYX Q66<sup>PV</sup>  
 BANGADANG WESTERN EXPRESS E10<sup>SV</sup> G A R METHOD<sup>SV</sup>  
 TEXAS UNDINE H647<sup>SV</sup> KELLY ANGUS METHOD N63<sup>SV</sup>  
 TEXAS UNDINE Z183<sup>PV</sup> LAWSONS BARTEL E7 J1240#

### Mid February 2024 TransTasman Angus Cattle Evaluation

TACE	Dir	Dtrs	GL	BW	200 W	400 W	600 W	MCW	Milk	SS	Doc
EBV	+1.0	+7.2	-7.1	+2.5	+53	+98	+135	+101	+21	+0.4	+32
ACC	66%	55%	83%	82%	83%	81%	81%	78%	73%	80%	76%

TACE	D t C	CWT	EMA	Rib	Rump	RBY	IMF	NFI-F	Claw	Angle	Leg
EBV	-3.9	+78	+8.3	-1.7	-1.3	+0.9	+1.5	-0.11	+1.22	+1.16	+0.94
ACC	41%	70%	70%	69%	70%	62%	74%	61%	72%	72%	67%

### Selection Indexes

\$A	\$A-L
\$218	\$363

**Traits Observed:** BWT,400WT, Scan(EMA,Rib,Rump,IMF), Structure(Claw Set x 1, Foot Angle x 1), Genomics

Notes: A soft, easy doing Powerplay son that has blended well with the Black Onyx line.

Purchaser:.....\$:

## Lot 42 KELLY ANGUS T653<sup>PV</sup> GXN22T653



DOB: 20/7/2022 Registration Status:HBR Genetic Status: AMFU,CAFU,DDFU,NHFU  
 AYRVALE BARTEL E7<sup>PV</sup> V A R DISCOVERY 2240<sup>PV</sup>  
 AYRVALE HERCULES H9<sup>PV</sup> FERGUSON TRAILBLAZER 239E<sup>SV</sup>  
 LAWSONS INVINCIBLE F338<sup>SV</sup> MOLITOR999 BARBELLA 940-3012#  
 Sire: DXTP613 TEXAS POWERPLAY P613<sup>PV</sup> Dam: GXNR96 KELLY ANGUS TRAILBLAZER R96<sup>PV</sup>  
 BANGADANG WESTERN EXPRESS E10<sup>SV</sup> T C A VISIONARY 158<sup>SV</sup>  
 TEXAS UNDINE H647<sup>SV</sup> KELLY ANGUS VISIONARY N71<sup>SV</sup>  
 TEXAS UNDINE Z183<sup>PV</sup> LAWSONS AFRICA H1028#

### Mid February 2024 TransTasman Angus Cattle Evaluation

TACE	Dir	Dtrs	GL	BW	200 W	400 W	600 W	MCW	Milk	SS	Doc
EBV	+8.5	+9.1	-4.9	-1.1	+50	+100	+136	+105	+20	+3.5	+20
ACC	64%	53%	83%	82%	82%	81%	81%	77%	72%	79%	76%

TACE	D t C	CWT	EMA	Rib	Rump	RBY	IMF	NFI-F	Claw	Angle	Leg
EBV	-6.8	+80	+7.7	+3.9	+4.2	-0.6	+4.3	+0.37	+1.00	+1.08	+1.12
ACC	41%	69%	69%	68%	70%	61%	73%	60%	73%	73%	68%

### Selection Indexes

\$A	\$A-L
\$261	\$447

**Traits Observed:** GL,BWT,600WT, Scan(EMA,Rib,Rump,IMF), Structure(Claw Set x 1, Foot Angle x 1), Genomics

Notes: A moderate framed, easy doing Powerplay son out of a heifer. High scrotal EBV.

Purchaser:.....\$:

Top 10% Top 20%

## Lot 43 KELLY ANGUS T711<sup>SV</sup> GXN22T711

DOB: 14/8/2022 Registration Status: HBR Genetic Status: AMFU, CAFU, DDFU, NHFU

G A R SURE FIRE<sup>SV</sup> TE MANIA BARTEL B219<sup>PV</sup>  
 RES DARK FIRE E612<sup>SV</sup> AYRVALE BARTEL E7<sup>PV</sup>  
 RES ELELA 193 587 466# EAGLEHAWK JEDDA B32<sup>SV</sup>  
 Sire: GXNR232 KELLY ANGUS RINGLEADER R232<sup>SV</sup> Dam: VLYH1005 LAWSONS BARTEL E7 H1005#  
 G A R PROPHET<sup>SV</sup> LAWSONS PAYLOAD X951#  
 LAWSONS PROPHET K1417# LAWSONS PAYLOAD F690#  
 LAWSONS TANK E468# LAWSONS CONVERGENCE B414#

### Mid February 2024 TransTasman Angus Cattle Evaluation

TACE	Dir	Dtrs	GL	BW	200 W	400 W	600 W	MCW	Milk	SS	Doc
EBV	+2.0	+4.4	-5.3	+4.0	+58	+94	+125	+108	+18	+0.6	+18
ACC	65%	55%	83%	81%	82%	80%	81%	77%	73%	78%	74%

TACE	D t C	CWT	EMA	Rib	Rump	RBY	IMF	NFI-F	Claw	Angle	Leg
EBV	-6.2	+72	+6.3	-2.1	-4.2	+0.6	+4.2	+0.24	+0.86	+0.80	+0.84
ACC	43%	70%	69%	69%	70%	61%	74%	61%	72%	72%	67%

### Selection Indexes

\$A	\$A-L
\$242	\$397

**Traits Observed:** GL, BWT, 400WT, Scan(EMA, Rib, Rump, IMF), Structure(Claw Set x 1, Foot Angle x 1), Genomics

Notes: T711 will grow out to a medium framed bull that is suited to cows with a great growth spread.

Purchaser: ..... \$: .....

## Lot 44 KELLY ANGUS T714<sup>PV</sup> GXN22T714



DOB: 18/8/2022 Registration Status: HBR Genetic Status: AMFU, CAFU, DDFU, NH25%

G A R SURE FIRE<sup>SV</sup> PARINGA JUDD J5<sup>PV</sup>  
 RES DARK FIRE E612<sup>SV</sup> LAWSONS BLUE BAGGER N149<sup>SV</sup>  
 RES ELELA 193 587 466# LAWSONS ANTICIPATION L684#  
 Sire: GXNR232 KELLY ANGUS RINGLEADER R232<sup>SV</sup> Dam: GXNR89 KELLY ANGUS BLUE BAGGER R89<sup>SV</sup>  
 G A R PROPHET<sup>SV</sup> LAWSONS TANK X1235#  
 LAWSONS PROPHET K1417# LAWSONS TANK F8189#  
 LAWSONS TANK E468# LAWSONS GAR EXT T4 W896#

### Mid February 2024 TransTasman Angus Cattle Evaluation

TACE	Dir	Dtrs	GL	BW	200 W	400 W	600 W	MCW	Milk	SS	Doc
EBV	+6.1	+4.8	-3.8	+2.3	+58	+95	+118	+93	+17	+2.8	+16
ACC	64%	53%	82%	81%	82%	80%	80%	77%	72%	78%	74%

TACE	D t C	CWT	EMA	Rib	Rump	RBY	IMF	NFI-F	Claw	Angle	Leg
EBV	-7.9	+70	+6.5	-0.7	-0.6	-0.3	+5.1	-0.10	+0.90	+0.94	+1.04
ACC	40%	69%	69%	68%	70%	60%	74%	61%	71%	72%	66%

### Selection Indexes

\$A	\$A-L
\$272	\$439

**Traits Observed:** GL, BWT, 400WT, Scan(EMA, Rib, Rump, IMF), Structure(Claw Set x 1, Foot Angle x 1), Genomics

Notes: A well-muscled R232 son, check out the carcass in this guy.

Purchaser: ..... \$: .....

## Lot 45 KELLY ANGUS T720<sup>SV</sup> GXN22T720

DOB: 28/8/2022 Registration Status: APR Genetic Status: AMFU, CAFU, DDF, NHFU

RENNYLEA KODAK K522<sup>SV</sup> CONNEALY FORWARD#  
 KELLY ANGUS KODAK P210<sup>PV</sup> STERITA PARK BLACK JACK J231<sup>PV</sup>  
 LAWSONS AMBASSADOR J1246<sup>SV</sup> SYDGEN FOREVER LADY 4413#  
 Sire: GXNR277 KELLY ANGUS KODAK R277<sup>PV</sup> Dam: GXNM73 KELLY ANGUS BLACK JACK M73#  
 G A R METHOD<sup>SV</sup> G A R PROGRESS<sup>SV</sup>  
 KELLY ANGUS METHOD N49<sup>SV</sup> LAWSONS PROGRESS G405#  
 LAWSONS BARTEL E7 K1571# LAWSONS TOTAL E154#

### Mid February 2024 TransTasman Angus Cattle Evaluation

TACE	Dir	Dtrs	GL	BW	200 W	400 W	600 W	MCW	Milk	SS	Doc
EBV	+0.5	-5.3	-3.2	+1.9	+51	+88	+114	+65	+19	+0.8	+6
ACC	63%	52%	81%	81%	82%	80%	80%	77%	72%	78%	74%

TACE	D t C	CWT	EMA	Rib	Rump	RBY	IMF	NFI-F	Claw	Angle	Leg
EBV	-3.0	+58	+9.9	+0.7	+0.3	+0.8	+1.5	-0.13	+0.94	+0.94	+0.82
ACC	39%	68%	68%	68%	69%	59%	73%	59%	70%	71%	66%

### Selection Indexes

\$A	\$A-L
\$210	\$312

**Traits Observed:** BWT, 400WT, Scan(EMA, Rib, Rump, IMF), Structure(Claw Set x 1, Foot Angle x 1), Genomics

Notes: R277 who sold to Lagoon Livestock in 2022, has sired a nice line of bulls. T720 is a well-rounded bull with plenty of depth. Note small amount of white.

Purchaser: ..... \$: .....

Top 10% Top 20%

## Lot 46 KELLY ANGUS T731<sup>PV</sup> GXN22T731

DOB: 7/9/2022 Registration Status: APR Genetic Status: AMFU, CAFU, DDFU, NHFU  
 RENNYLEA KODAK K522<sup>SV</sup> MCC DAYBREAK<sup>#</sup>  
 KELLY ANGUS KODAK P210<sup>PV</sup> G A R SUNRISE<sup>SV</sup>  
 LAWSONS AMBASSADOR J1246<sup>SV</sup> G A R OBJECTIVE R227<sup>#</sup>  
 Sire: GXNR277 KELLY ANGUS KODAK R277<sup>PV</sup> Dam: GXNN45 KELLY ANGUS SUNRISE N45<sup>SV</sup>  
 G A R METHOD<sup>SV</sup> G A R ANTICIPATION<sup>#</sup>  
 KELLY ANGUS METHOD N49<sup>SV</sup> LAWSONS ANTICIPATION K1547<sup>#</sup>  
 LAWSONS BARTEL E7 K1571<sup>#</sup> LAWSONS EVIDENT H873<sup>#</sup>

### Mid February 2024 TransTasman Angus Cattle Evaluation

TACE	Dir	Dtrs	GL	BW	200 W	400 W	600 W	MCW	Milk	SS	Doc
EBV	+0.5	-3.7	-2.1	+4.8	+58	+93	+123	+100	+15	+2.9	+8
ACC	63%	52%	82%	80%	81%	79%	80%	76%	72%	77%	73%

TACE	D t C	CWT	EMA	Rib	Rump	RBY	IMF	NFI-F	Claw	Angle	Leg
EBV	-6.2	+58	+14.8	-2.4	-4.0	+1.9	+3.7	+0.04	+0.66	+0.76	+0.82
ACC	39%	68%	68%	67%	69%	59%	73%	59%	70%	71%	65%

### Selection Indexes

\$A	\$A-L
\$264	\$406

**Traits Observed:** BWT, 400WT, Scan(EMA, Rib, Rump, IMF), Structure(Claw Set x 1, Foot Angle x 1), Genomics

Notes: T731 will mature into a moderate framed bull full of meat.

Purchaser: ..... \$: .....

## Lot 47 KELLY ANGUS T722<sup>SV</sup> GXN22T722

DOB: 29/8/2022 Registration Status: APR Genetic Status: AMFU, CAFU, DDFU, NHFU  
 RENNYLEA KODAK K522<sup>SV</sup> AYRVALE BARTEL E7<sup>PV</sup>  
 KELLY ANGUS KODAK P210<sup>PV</sup> AYRVALE HERCULES H9<sup>PV</sup>  
 LAWSONS AMBASSADOR J1246<sup>SV</sup> LAWSONS INVINCIBLE F338<sup>SV</sup>  
 Sire: GXNR277 KELLY ANGUS KODAK R277<sup>PV</sup> Dam: GXNM50 KELLY ANGUS HERCULES M50<sup>#</sup>  
 G A R METHOD<sup>SV</sup> LAWSONS NOVAK E313<sup>SV</sup>  
 KELLY ANGUS METHOD N49<sup>SV</sup> LAWSONS NOVAK H914<sup>#</sup>  
 LAWSONS BARTEL E7 K1571<sup>#</sup> LAWSONS EQUATOR E585<sup>#</sup>

### Mid February 2024 TransTasman Angus Cattle Evaluation

TACE	Dir	Dtrs	GL	BW	200 W	400 W	600 W	MCW	Milk	SS	Doc
EBV	-0.5	-1.4	+0.8	+2.7	+55	+96	+126	+109	+23	+2.2	+22
ACC	64%	54%	82%	81%	82%	80%	80%	77%	72%	78%	74%

TACE	D t C	CWT	EMA	Rib	Rump	RBY	IMF	NFI-F	Claw	Angle	Leg
EBV	-2.6	+68	+9.2	-2.3	-4.3	+1.1	+4.0	-0.34	+0.90	+0.74	+1.00
ACC	41%	69%	69%	68%	69%	60%	74%	61%	70%	71%	66%

### Selection Indexes

\$A	\$A-L
\$204	\$338

**Traits Observed:** BWT, 400WT, Scan(EMA, Rib, Rump, IMF), Structure(Claw Set x 1, Foot Angle x 1), Genomics

Notes: A good honest type of bull for cow joinings.

Purchaser: ..... \$: .....

## Lot 48 KELLY ANGUS T726<sup>PV</sup> GXN22T726



DOB: 5/9/2022 Registration Status: APR Genetic Status: AMFU, CAFU, DDFU, NHFU  
 RENNYLEA KODAK K522<sup>SV</sup> RENNYLEA EDMUND E11<sup>PV</sup>  
 KELLY ANGUS KODAK P210<sup>PV</sup> RENNYLEA KODAK K522<sup>SV</sup>  
 LAWSONS AMBASSADOR J1246<sup>SV</sup> RENNYLEA EISA ERICA F810<sup>#</sup>  
 Sire: GXNR277 KELLY ANGUS KODAK R277<sup>PV</sup> Dam: GXNQ38 KELLY ANGUS KODAK Q38<sup>SV</sup>  
 G A R METHOD<sup>SV</sup> YTHANBRAE HENRY VIII U8<sup>SV</sup>  
 KELLY ANGUS METHOD N49<sup>SV</sup> LAWSONS HENRY VIII H8161<sup>#</sup>  
 LAWSONS BARTEL E7 K1571<sup>#</sup> LAWSONS HENRY VIII Y1400<sup>#</sup>

### Mid February 2024 TransTasman Angus Cattle Evaluation

TACE	Dir	Dtrs	GL	BW	200 W	400 W	600 W	MCW	Milk	SS	Doc
EBV	+9.9	+4.0	-2.8	+0.1	+47	+80	+102	+64	+16	+3.0	+10
ACC	64%	54%	82%	81%	82%	80%	81%	77%	73%	78%	74%

TACE	D t C	CWT	EMA	Rib	Rump	RBY	IMF	NFI-F	Claw	Angle	Leg
EBV	-2.6	+53	+8.5	+0.3	-2.6	+0.8	+3.8	+0.00	+0.78	+0.90	+0.96
ACC	40%	69%	69%	69%	70%	60%	74%	61%	69%	69%	65%

### Selection Indexes

\$A	\$A-L
\$211	\$332

**Traits Observed:** BWT, 400WT, Scan(EMA, Rib, Rump, IMF), Structure(Claw Set x 1, Foot Angle x 1), Genomics

Notes: A smaller framed R277 son, a perfect heifer option.

Purchaser: ..... \$: .....

Top 10% Top 20%

## Lot 49

## KELLY ANGUS T632<sup>PV</sup>

## GXN22T632



DOB: 15/7/2022

Registration Status:HBR

Genetic Status: AMFU,CAFU,DDFU,NHF

G A R PROGRESS<sup>SV</sup>  
 G A R MOMENTUM<sup>PV</sup>  
 G A R BIG EYE 1770<sup>#</sup>  
 Sire: USA19570738 G A R TRANSCENDENT<sup>PV</sup>  
 G A R PROPHET<sup>SV</sup>  
 G A R PROPHET 2685<sup>#</sup>  
 G A R DAYBREAK 2842<sup>#</sup>

MATAURI REALITY 839<sup>#</sup>  
 MILWILLAH KRAKATOA K92<sup>PV</sup>  
 MILWILLAH BARUNAH H224<sup>#</sup>  
 Dam: GXNN105 KELLY ANGUS KRAKATOA N105<sup>SV</sup>  
 G A R ULTIMATE<sup>#</sup>  
 LAWSONS ULTIMATE E658<sup>#</sup>  
 LAWSONS NEW DESIGN 1407 B1453<sup>#</sup>

### Mid February 2024 TransTasman Angus Cattle Evaluation

TACE	Dir	Dtrs	GL	BW	200 W	400 W	600 W	MCW	Milk	SS	Doc
EBV	+7.8	+2.2	-6.9	-0.6	+34	+63	+80	+59	+15	+0.9	+16
ACC	66%	56%	83%	82%	83%	81%	81%	78%	74%	79%	75%

TACE	D t C	CWT	EMA	Rib	Rump	RBY	IMF	NFI-F	Claw	Angle	Leg
EBV	-4.2	+30	+12.1	+3.6	+2.7	-0.8	+6.9	+1.65	+0.78	+0.82	+0.94
ACC	43%	71%	70%	70%	71%	62%	75%	61%	74%	74%	63%

### Selection Indexes

\$A	\$A-L
\$200	\$319

**Traits Observed:** GL,BWT,400WT, Scan(EMA,Rib,Rump,IMF), Structure(Claw Set x 1, Foot Angle x 1), Genomics

Notes: If you are looking to add extra fat cover this bull will tick that box. He boasts plenty of shape with a fantastic topline.

Purchaser: ..... \$: .....

## Lot 50

## KELLY ANGUS T718<sup>PV</sup>

## GXN22T718



DOB: 28/8/2022

Registration Status:APR

Genetic Status: AMFU,CAFU,DDFU,NHFU

V A R DISCOVERY 2240<sup>PV</sup>  
 FERGUSON TRAILBLAZER 239E<sup>SV</sup>  
 MOLITOR999 BARBELLA 940-3012<sup>#</sup>  
 Sire: GXNR233 KELLY ANGUS TRAILBLAZER R233<sup>PV</sup>  
 LAWSONS SURE FIRE L1187<sup>SV</sup>  
 KELLY ANGUS SF L1187 N134<sup>SV</sup>  
 LAWSONS BARTEL E7 K1474<sup>#</sup>

G A R INGENUITY<sup>#</sup>  
 V A R INDEX 3282<sup>PV</sup>  
 SANDPOINT BLACKBIRD 8809<sup>#</sup>  
 Dam: GXNP61 KELLY ANGUS INDEX P61<sup>SV</sup>  
 AYRVALE BARTEL E7<sup>PV</sup>  
 LAWSONS BARTEL E7 K1591<sup>#</sup>  
 LAWSONS TOTAL E242<sup>SV</sup>

### Mid February 2024 TransTasman Angus Cattle Evaluation

TACE	Dir	Dtrs	GL	BW	200 W	400 W	600 W	MCW	Milk	SS	Doc
EBV	+2.9	+7.7	-3.7	+4.6	+57	+94	+120	+107	+11	+2.2	+6
ACC	64%	55%	82%	81%	82%	81%	81%	78%	73%	79%	75%

TACE	D t C	CWT	EMA	Rib	Rump	RBY	IMF	NFI-F	Claw	Angle	Leg
EBV	-6.5	+58	+13.7	+1.4	+2.6	+0.8	+3.4	+0.25	+0.72	+0.96	+0.82
ACC	41%	69%	69%	69%	70%	60%	74%	61%	69%	70%	64%

### Selection Indexes

\$A	\$A-L
\$276	\$445

**Traits Observed:** BWT,400WT, Scan(EMA,Rib,Rump,IMF), Structure(Claw Set x 1, Foot Angle x 1), Genomics

Notes: T718 is a bull that is suitable for heifer joinings yet has the growth and carcass to back it up. High EMA and positive fats round him out.

Purchaser: ..... \$: .....

## Lot 51

## KELLY ANGUS T740<sup>PV</sup>

## GXN22T740

DOB: 19/9/2022

Registration Status:HBR

Genetic Status: AMFU,CAFU,DDFU,NHFU

G A R SURE FIRE<sup>SV</sup>  
 RES DARK FIRE E612<sup>SV</sup>  
 RES ELELA 193 587 466<sup>#</sup>  
 Sire: GXNR230 KELLY ANGUS DARK FIRE R230<sup>SV</sup>  
 G A R PROPHET<sup>SV</sup>  
 KELLY ANGUS PROPHET M64<sup>#</sup>  
 LAWSONS TANK B1155 G229<sup>#</sup>

AYRVALE BARTEL E7<sup>PV</sup>  
 AYRVALE HERCULES H9<sup>PV</sup>  
 LAWSONS INVINCIBLE F338<sup>SV</sup>  
 Dam: GXNQ335 KELLY ANGUS HERCULES Q335<sup>SV</sup>  
 LAWSONS GENERAL G1730<sup>SV</sup>  
 LAWSONS GENERAL J1326<sup>#</sup>  
 LAWSONS INVINCIBLE G8144<sup>#</sup>

### Mid February 2024 TransTasman Angus Cattle Evaluation

TACE	Dir	Dtrs	GL	BW	200 W	400 W	600 W	MCW	Milk	SS	Doc
EBV	+0.1	+3.7	-8.9	+6.4	+66	+119	+152	+131	+23	+2.4	+19
ACC	65%	55%	82%	81%	82%	80%	81%	77%	73%	78%	75%

TACE	D t C	CWT	EMA	Rib	Rump	RBY	IMF	NFI-F	Claw	Angle	Leg
EBV	-6.3	+95	+6.7	-0.9	-1.9	+0.1	+3.8	+0.07	+1.08	+0.84	+0.54
ACC	42%	70%	70%	69%	70%	61%	74%	62%	65%	65%	65%

### Selection Indexes

\$A	\$A-L
\$262	\$442

**Traits Observed:** BWT,400WT, Scan(EMA,Rib,Rump,IMF),Genomics

Notes: A well put together bull with a good muscle pattern. A cow bull with plenty of growth.

Purchaser: ..... \$: .....

Top 10%

Top 20%

## Lot 52

## KELLY ANGUS T697<sup>PV</sup>

## GXN22T697



DOB: 7/8/2022

Registration Status:HBR

Genetic Status: AMFU,CAFU,DDFU,NHFU

G A R SURE FIRE<sup>SV</sup>  
 RES DARK FIRE E612<sup>SV</sup>  
 RES ELELA 193 587 466<sup>#</sup>  
 Sire: GXNR232 KELLY ANGUS RINGLEADER R232<sup>SV</sup>  
 G A R PROPHET<sup>SV</sup>  
 LAWSONS PROPHET K1417<sup>#</sup>  
 LAWSONS TANK E468<sup>#</sup>

V A R DISCOVERY 2240<sup>PV</sup>  
 FERGUSON TRAILBLAZER 239E<sup>SV</sup>  
 MOLITOR999 BARBELLA 940-3012<sup>#</sup>  
 Dam: GXNR31 KELLY ANGUS TRAILBLAZER R31<sup>PV</sup>  
 LAWSONS INTENSITY L199<sup>PV</sup>  
 KELLY ANGUS INTENSITY L199 P78<sup>SV</sup>  
 LAWSONS HENRY G1097 K1605<sup>#</sup>

### Mid February 2024 TransTasman Angus Cattle Evaluation

TACE	Dir	Dtrs	GL	BW	200 W	400 W	600 W	MCW	Milk	SS	Doc
EBV	+5.8	+7.2	-11.1	+2.3	+69	+120	+157	+133	+17	+0.6	+29
ACC	64%	53%	83%	81%	82%	80%	80%	77%	72%	78%	74%
TACE	D t C	CWT	EMA	Rib	Rump	RBY	IMF	NFI-F	Claw	Angle	Leg
EBV	-7.2	+96	+3.9	-0.7	-2.5	-1.1	+6.5	+0.32	+0.70	+1.04	+0.96
ACC	39%	69%	69%	69%	70%	60%	74%	61%	72%	72%	65%

### Selection Indexes

\$A	\$A-L
\$290	\$492

**Traits Observed:** GL,BWT,400WT, Scan(EMA,Rib,Rump,IMF), Structure(Claw Set x 1, Foot Angle x 1), Genomics

Notes: T697 is a heifer's first calf and he is the highest ABI bull in the sale group. Sired by our homebred semen sire Ringleader R232.

Purchaser: ..... \$: .....

## Lot 53

## KELLY ANGUS T730<sup>PV</sup>

## GXN22T730

DOB: 5/9/2022

Registration Status:HBR

Genetic Status: AMFU,CAFU,DDFU,NHFU

RENNYLEA KODAK K522<sup>SV</sup>  
 KELLY ANGUS KODAK P210<sup>PV</sup>  
 LAWSONS AMBASSADOR J1246<sup>SV</sup>  
 Sire: GXNR278 KELLY ANGUS KODAK R278<sup>SV</sup>  
 LAWSONS KI AFRICA J6041<sup>PV</sup>  
 KELLY ANGUS KI J6041 N128<sup>#</sup>  
 LAWSONS INVINCIBLE G8144<sup>#</sup>

CONNEALY BLACK GRANITE<sup>#</sup>  
 QHF WWA BLACK ONYX 5Q11<sup>SV</sup>  
 WILKS BLACKCAP 0D82<sup>#</sup>  
 Dam: GXNR11 KELLY ANGUS ONYX R11<sup>SV</sup>  
 G A R PROGRESS<sup>SV</sup>  
 LAWSONS PROGRESS G397<sup>#</sup>  
 LAWSONS IRONSTONE E277<sup>#</sup>

### Mid February 2024 TransTasman Angus Cattle Evaluation

TACE	Dir	Dtrs	GL	BW	200 W	400 W	600 W	MCW	Milk	SS	Doc
EBV	-2.5	+1.7	+0.6	+2.9	+47	+99	+143	+126	+21	+3.1	+10
ACC	63%	52%	81%	81%	82%	80%	80%	77%	72%	78%	74%
TACE	D t C	CWT	EMA	Rib	Rump	RBY	IMF	NFI-F	Claw	Angle	Leg
EBV	-3.1	+73	+7.7	-0.9	-3.0	+0.4	+4.5	-0.36	+0.80	+1.08	+1.08
ACC	38%	68%	68%	68%	69%	59%	73%	60%	68%	69%	64%

### Selection Indexes

\$A	\$A-L
\$180	\$331

**Traits Observed:** BWT,400WT, Scan(EMA,Rib,Rump,IMF), Structure(Claw Set x 1, Foot Angle x 1), Genomics

Notes: A good option for cows if you are wanting to add some extra growth, carcass and fertility.

Purchaser: ..... \$: .....

## Lot 54

## KELLY ANGUS T743<sup>PV</sup>

## GXN22T743



DOB: 20/9/2022

Registration Status:APR

Genetic Status: AMFU,CAFU,DDFU,NHFU

G A R SURE FIRE<sup>SV</sup>  
 RES DARK FIRE E612<sup>SV</sup>  
 RES ELELA 193 587 466<sup>#</sup>  
 Sire: GXNR232 KELLY ANGUS RINGLEADER R232<sup>SV</sup>  
 G A R PROPHET<sup>SV</sup>  
 LAWSONS PROPHET K1417<sup>#</sup>  
 LAWSONS TANK E468<sup>#</sup>

AYRVALE BARTEL E7<sup>PV</sup>  
 AYRVALE HERCULES H9<sup>PV</sup>  
 LAWSONS INVINCIBLE F338<sup>SV</sup>  
 Dam: GXNQ28 KELLY ANGUS HERCULES Q28<sup>SV</sup>  
 G A R ANTICIPATION<sup>#</sup>  
 LAWSONS ANTICIPATION L1139<sup>#</sup>  
 LAWSONS EVIDENT H8066<sup>#</sup>

### Mid February 2024 TransTasman Angus Cattle Evaluation

TACE	Dir	Dtrs	GL	BW	200 W	400 W	600 W	MCW	Milk	SS	Doc
EBV	+11.2	+7.0	-9.0	-1.8	+47	+86	+115	+76	+25	+2.5	+22
ACC	62%	52%	81%	80%	81%	79%	79%	76%	71%	76%	72%
TACE	D t C	CWT	EMA	Rib	Rump	RBY	IMF	NFI-F	Claw	Angle	Leg
EBV	-8.3	+78	+6.6	+2.0	+2.0	-0.2	+5.1	+0.39	+1.04	+1.06	+1.06
ACC	39%	68%	67%	67%	68%	59%	72%	59%	68%	68%	67%

### Selection Indexes

\$A	\$A-L
\$271	\$430

**Traits Observed:** BWT,400WT, Scan(EMA,Rib,Rump,IMF),Genomics

Notes: A bull with a lot of muscle expression, plenty of calving ease and a high IMF.

Purchaser: ..... \$: .....

Top 10%

Top 20%

## Lot 55

## KELLY ANGUS T741<sup>PV</sup>

## GXN22T741



DOB: 19/9/2022

Registration Status:APR

Genetic Status: AMFU,CAFU,DDFU,NHFU

V A R DISCOVERY 2240<sup>PV</sup>  
 FERGUSON TRAILBLAZER 239E<sup>SV</sup>  
 MOLITOR999 BARBELLA 940-3012\*  
 Sire: GXNR233 KELLY ANGUS TRAILBLAZER R233<sup>PV</sup>  
 LAWSONS SURE FIRE L1187<sup>SV</sup>  
 KELLY ANGUS SF L1187 N134<sup>SV</sup>  
 LAWSONS BARTEL E7 K1474\*

G A R MOMENTUM<sup>PV</sup>  
 G A R METHOD<sup>SV</sup>  
 G A R DAYBREAK 1332\*  
 Dam: GXNN49 KELLY ANGUS METHOD N49<sup>SV</sup>  
 AYRVALE BARTEL E7<sup>PV</sup>  
 LAWSONS BARTEL E7 K1571\*  
 LAWSONS TANK E192\*

### Mid February 2024 TransTasman Angus Cattle Evaluation

TACE	Dir	Dtrs	GL	BW	200 W	400 W	600 W	MCW	Milk	SS	Doc
EBV	+6.5	+4.5	-5.6	+3.1	+51	+95	+123	+93	+16	+1.6	+16
ACC	64%	54%	82%	81%	82%	80%	81%	77%	73%	78%	74%
TACE	D t C	CWT	EMA	Rib	Rump	RBY	IMF	NFI-F	Claw	Angle	Leg
EBV	-6.2	+74	+12.7	+2.8	+3.5	+0.2	+3.2	+0.61	+1.14	+1.06	+1.10
ACC	40%	69%	69%	69%	70%	60%	74%	61%	61%	61%	61%

### Selection Indexes

\$A	\$A-L
\$264	\$428

Traits Observed: BWT,400WT, Scan(EMA,Rib,Rump,IMF),Genomics

Notes: Being one of the babies of the group out of a great cow who has had 2 bulls sell in past sales. His data is very complete, worth a second look.

Purchaser:..... \$:.....

## Lot 56

## KELLY ANGUS T734<sup>PV</sup>

## GXN22T734



DOB: 7/9/2022

Registration Status:HBR

Genetic Status: AMFU,CAFU,DDFU,NHFU

G A R SURE FIRE<sup>SV</sup>  
 RES DARK FIRE E612<sup>SV</sup>  
 RES ELELA 193 587 466\*  
 Sire: GXNR230 KELLY ANGUS DARK FIRE R230<sup>SV</sup>  
 G A R PROPHET<sup>SV</sup>  
 KELLY ANGUS PROPHET M64\*  
 LAWSONS TANK B1155 G229\*

KC HAAS GPS\*  
 TEXAS MOUNT K002<sup>PV</sup>  
 TEXAS UNDINE Z183<sup>PV</sup>  
 Dam: GXNQ89 KELLY ANGUS K2 Q89<sup>PV</sup>  
 G A R SUNRISE<sup>SV</sup>  
 KELLY ANGUS SUNRISE N42<sup>SV</sup>  
 LAWSONS BARTEL E7 K1510\*

### Mid February 2024 TransTasman Angus Cattle Evaluation

TACE	Dir	Dtrs	GL	BW	200 W	400 W	600 W	MCW	Milk	SS	Doc
EBV	+2.6	+1.0	-2.1	+3.8	+51	+86	+100	+64	+22	+0.5	+19
ACC	64%	53%	82%	81%	82%	80%	80%	77%	73%	78%	74%
TACE	D t C	CWT	EMA	Rib	Rump	RBY	IMF	NFI-F	Claw	Angle	Leg
EBV	-3.1	+52	+1.0	+0.6	+3.3	-0.9	+3.5	-0.63	+0.84	+0.96	+0.84
ACC	41%	69%	69%	68%	69%	60%	73%	60%	72%	72%	66%

### Selection Indexes

\$A	\$A-L
\$200	\$311

Traits Observed: BWT,400WT, Scan(EMA,Rib,Rump,IMF), Structure(Claw Set x 1, Foot Angle x 1), Genomics

Notes: A stocky Darkfire x Texas K2 grandson suitable for heifers.

Purchaser:..... \$:.....

## Lot 57

## KELLY ANGUS T689<sup>PV</sup>

## GXN22T689



DOB: 3/8/2022

Registration Status:HBR

Genetic Status: AMFU,CAFU,DDFU,NHFU

G A R SURE FIRE<sup>SV</sup>  
 RES DARK FIRE E612<sup>SV</sup>  
 RES ELELA 193 587 466\*  
 Sire: GXNR232 KELLY ANGUS RINGLEADER R232<sup>SV</sup>  
 G A R PROPHET<sup>SV</sup>  
 LAWSONS PROPHET K1417\*  
 LAWSONS TANK E468\*

PARINGA JUDD J5<sup>PV</sup>  
 PARINGA MR.EASY M194<sup>SV</sup>  
 LAWSONS ANTICIPATION K1523\*  
 Dam: GXNR3 KELLY ANGUS MR EASY R3<sup>SV</sup>  
 G A R PROGRESS<sup>SV</sup>  
 LAWSONS PROGRESS G286\*  
 LAWSONS TANK E232\*

### Mid February 2024 TransTasman Angus Cattle Evaluation

TACE	Dir	Dtrs	GL	BW	200 W	400 W	600 W	MCW	Milk	SS	Doc
EBV	+8.9	+5.8	-12.4	-0.9	+48	+97	+121	+85	+21	+1.6	+15
ACC	64%	53%	82%	81%	82%	80%	81%	77%	73%	78%	74%
TACE	D t C	CWT	EMA	Rib	Rump	RBY	IMF	NFI-F	Claw	Angle	Leg
EBV	-2.9	+54	+3.9	+1.1	-0.8	-0.7	+4.8	+0.47	+1.04	+1.04	+0.78
ACC	40%	69%	69%	69%	70%	60%	74%	61%	64%	64%	60%

### Selection Indexes

\$A	\$A-L
\$208	\$355

Traits Observed: BWT,400WT, Scan(EMA,Rib,Rump,IMF),Genomics

Notes: A heifer's first calf who was also a twin. A docile bull that would add fertility to any herd.

Purchaser:..... \$:.....

Top 10%

Top 20%

## Lot 58

## KELLY ANGUS T696<sup>PV</sup>

## GXN22T696



DOB: 7/8/2022

Registration Status:HBR

Genetic Status: AMFU,CAFU,DDFU,NHFU

G A R SURE FIRE<sup>SV</sup>  
RES DARK FIRE E612<sup>SV</sup>  
RES ELELA 193 587 466<sup>#</sup>  
Sire: GXNR232 KELLY ANGUS RINGLEADER R232<sup>SV</sup>  
G A R PROPHET<sup>SV</sup>  
LAWSONS PROPHET K1417<sup>#</sup>  
LAWSONS TANK E468<sup>#</sup>

TE MANIA BERKLEY B1<sup>PV</sup>  
TEXAS BERKLEY K508<sup>SV</sup>  
TEXAS UNDINE Z036<sup>SV</sup>  
Dam: GXNR24 KELLY ANGUS KORPORAL M584 R24<sup>SV</sup>  
LAWSONS INCREDIBLE H803<sup>PV</sup>  
LAWSONS INCREDIBLE L1296<sup>#</sup>  
LAWSONS INVINCIBLE G8154<sup>#</sup>

### Mid February 2024 TransTasman Angus Cattle Evaluation

TACE	Dir	Dtrs	GL	BW	200 W	400 W	600 W	MCW	Milk	SS	Doc
EBV	+2.9	+3.9	-4.8	+4.7	+55	+103	+132	+100	+24	+1.9	+31
ACC	64%	54%	83%	82%	82%	80%	81%	77%	73%	78%	74%
TACE	D t C	CWT	EMA	Rib	Rump	RBY	IMF	NFI-F	Claw	Angle	Leg
EBV	-8.0	+89	+10.2	-0.5	-1.1	+0.0	+4.8	+0.83	+1.22	+1.08	+0.94
ACC	41%	69%	69%	69%	70%	61%	74%	61%	71%	71%	66%

### Selection Indexes

\$A	\$A-L
\$275	\$440

**Traits Observed:** GL,BWT,400WT, Scan(EMA,Rib,Rump,IMF), Structure(Claw Set x 1, Foot Angle x 1), Genomics

Notes: A heifer's first calf with plenty of meat, very docile. Perfect to join to heifers.

Purchaser:..... \$:.....

## Lot 59

## KELLY ANGUS T744<sup>PV</sup>

## GXN22T744



DOB: 20/9/2022

Registration Status:HBR

Genetic Status: AMFU,CAFU,DDFU,NHFU

CONNELLY BLACK GRANITE<sup>#</sup>  
QHF WWA BLACK ONYX 5Q11<sup>SV</sup>  
WILKS BLACKCAP 0D82<sup>#</sup>  
Sire: GXNQ209 KELLY ANGUS QUINN Q209<sup>SV</sup>  
G A R PROPHET<sup>SV</sup>  
LAWSONS PROPHET L1327<sup>#</sup>  
LAWSONS BARTEL E7 J1127<sup>#</sup>

G A R INGENUITY<sup>#</sup>  
V A R INDEX 3282<sup>PV</sup>  
SANDPOINT BLACKBIRD 8809<sup>#</sup>  
Dam: GXNP82 KELLY ANGUS INDEX P82<sup>SV</sup>  
G A R PROGRESS<sup>SV</sup>  
LAWSONS PROGRESS H1077<sup>#</sup>  
LAWSONS PAYLOAD X951 E605<sup>#</sup>

### Mid February 2024 TransTasman Angus Cattle Evaluation

TACE	Dir	Dtrs	GL	BW	200 W	400 W	600 W	MCW	Milk	SS	Doc
EBV	+5.0	+3.5	-3.7	+2.2	+55	+94	+122	+78	+28	+1.1	+5
ACC	65%	55%	83%	82%	83%	81%	81%	78%	73%	79%	75%
TACE	D t C	CWT	EMA	Rib	Rump	RBY	IMF	NFI-F	Claw	Angle	Leg
EBV	-5.5	+68	+6.3	-0.3	-3.4	+0.5	+4.8	+0.31	+1.10	+1.08	+1.10
ACC	41%	70%	70%	69%	71%	61%	74%	61%	66%	66%	65%

### Selection Indexes

\$A	\$A-L
\$259	\$398

**Traits Observed:** BWT,400WT, Scan(EMA,Rib,Rump,IMF),Genomics

Notes: The youngest bull in the draft, being sired by Q209 rest assured he has plenty to offer as a great heifer option.

Purchaser:..... \$:.....

## Lot 60

## KELLY ANGUS T644<sup>PV</sup>

## GXN22T644



DOB: 18/7/2022

Registration Status:HBR

Genetic Status: AMFU,CAFU,DDFU,NHFU

G A R PROGRESS<sup>SV</sup>  
G A R MOMENTUM<sup>PV</sup>  
G A R BIG EYE 1770<sup>#</sup>  
Sire: VLYR4010 LAWSONS ROCKY R4010<sup>PV</sup>  
PARINGA JUDD J5<sup>PV</sup>  
LAWSONS JUDD P4005<sup>SV</sup>  
LAWSONS PROPHET M4047<sup>#</sup>

CONNELLY BLACK GRANITE<sup>#</sup>  
QHF WWA BLACK ONYX 5Q11<sup>SV</sup>  
WILKS BLACKCAP 0D82<sup>#</sup>  
Dam: GXNQ69 KELLY ANGUS ONYX Q69<sup>PV</sup>  
MILWILLAH KRAKATOA K92<sup>PV</sup>  
KELLY ANGUS KRAKATOA N267<sup>SV</sup>  
LAWSONS F1669<sup>#</sup>

### Mid February 2024 TransTasman Angus Cattle Evaluation

TACE	Dir	Dtrs	GL	BW	200 W	400 W	600 W	MCW	Milk	SS	Doc
EBV	+10.2	+7.7	-7.1	-0.6	+45	+77	+82	+48	+10	+1.7	+10
ACC	66%	55%	83%	82%	83%	82%	82%	78%	73%	80%	78%
TACE	D t C	CWT	EMA	Rib	Rump	RBY	IMF	NFI-F	Claw	Angle	Leg
EBV	-6.8	+56	+12.1	+4.0	+5.1	-0.3	+3.7	+0.85	+1.22	+1.12	+0.88
ACC	41%	70%	70%	70%	71%	62%	74%	61%	73%	74%	69%

### Selection Indexes

\$A	\$A-L
\$260	\$396

**Traits Observed:** GL,BWT,400WT, Scan(EMA,Rib,Rump,IMF), Structure(Claw Set x 1, Foot Angle x 1), Genomics

Notes: T644 is as thick as a brick, moderate frame, perfect heifer bull.

Purchaser:..... \$:.....

Top 10%

Top 20%



# AuctionsPlus

## How to Register and Bid on AuctionsPlus

1

Go to [www.auctionsplus.com.au](http://www.auctionsplus.com.au) to register at least 48 hours before the sale.

2

Select “**Sign Up**” in the top right hand corner.

3

Fill out your name, mobile number, email address and create a password.

4

Go to your emails and confirm the account.

5

Return to AuctionsPlus and log in.

6

Select “**Dashboard**” and then select “**Request Approval to Buy**”.

7

Fill in buyer details and once completed go back to Dashboard.

8

Complete buyer induction module (approx. 30 minutes).

9

AuctionsPlus will email you to let you know that your account has been approved.

10

Log in on sale day and connect to auction.

11

Bid using the two-step process – unlock the bid button and bid at that price.

12

If you are successful, the selling agent will contact you post sale to organise delivery and payment.

For more information please contact us on:

Phone: (02) 9262 4222

Email: [info@auctionsplus.com.au](mailto:info@auctionsplus.com.au)



# HIGHLIGHTS 2023 SALE



Lined area for notes, consisting of multiple horizontal dotted lines.

**BULL INSPECTION DAY**  
WEDNESDAY 13 MARCH  
10AM TO 3PM



# LAWSONS ROCKY R4010

*Rocky is unmatched within the Angus breed!*

Rocky is the record breaking, highest priced yearling bull across all breeds within Australia, selling for \$130,000 to Kelly Angus, Gilmandyke Angus, Dunoon Angus and Knowla Livestock.

Rocky commands your attention with his sire appeal and overall balance in an attractive, well-made package. A bull that stands square to the ground with added muscling, natural thickness, and base width.

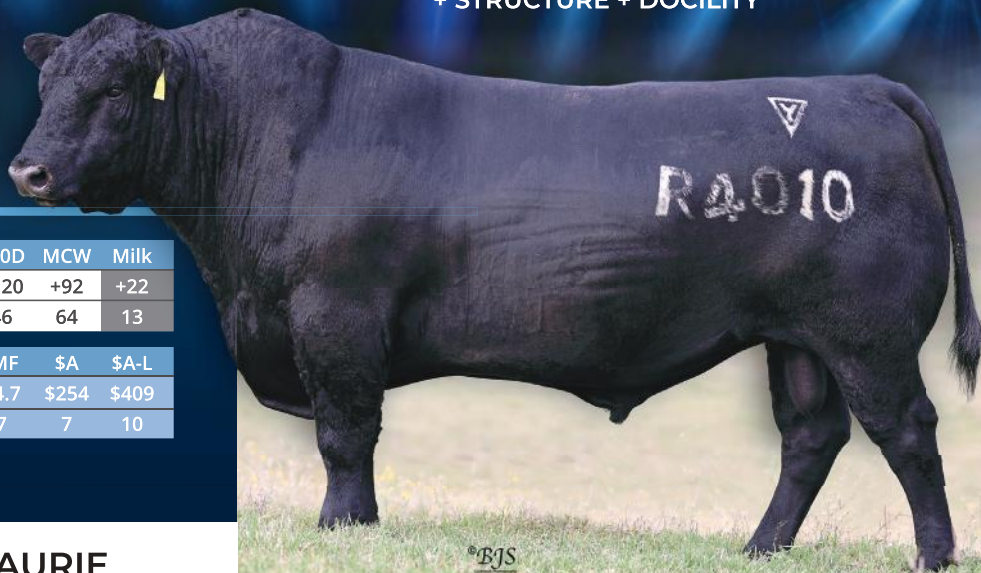
Rocky was 34kg born out of a maiden heifer P4005, who is a functional female, with a picture perfect udder.

The data speaks for itself, he is the only animal in the breed to have his level and combination of calving ease, growth, fertility, and carcass data.

## 5 STAR SIRE



CALVING EASE + GROWTH + CARCASS + MATERNAL  
+ STRUCTURE + DOCILITY



Trait	CEDir	CEDtrs	BW	200D	400D	600D	MCW	Milk
EBV	+6.3	+5.8	+2.6	+53	+92	+120	+92	+22
RANK	16	21	21	39	48	46	64	13

Trait	SS	CWT	EMA	Rib	Rump	IMF	\$A	\$A-L
EBV	+2.4	+70	+11.5	+2.0	+1.6	+4.7	\$254	\$409
RANK	39	42	8	12	19	7	7	10

TOP 10% TOP 20%



JACK LAURIE  
0467 484 479

# POWERPLAY

7AN625 TEXAS POWERPLAY P613

**POWER  
UP YOUR  
PROGRAM  
WITH  
POWERPLAY!**



**WORLD WIDE SIRES**

wwwaustralia.com



# V<sup>K</sup> KELLY VANGUS

QUALITY STOCK & SERVICE

# VK

 0434 559 101     vkppfarm@vkpp.com.au

 171 Nashs Road, Yea VIC 3717

 [kellyangus.com.au](http://kellyangus.com.au)