

**K**  
**V** KELLY  
ANGUS

QUALITY STOCK & SERVICE

# Inaugural Bull Sale



**25th MARCH 2020**

**50 ANGUS BULLS - 18 MONTH OLD**

# PARTHENON

KELLY ANGUS PARTHENON P199

Kodak X Bartel E7 X Tank X1235

- PARTHENON is an exciting new release sire with a combination of EBV's that are unmatched in the breed for Marbling, Fertility and \$indexes.
- Outstanding phenotype he has been scored all 5 and 6's for feet and legs. He is very well balanced, free moving with ample muscling, thickness and softness.



VIDEO FOOTAGE

## JANUARY 2020 BREEDPLAN DATA

	CE Dir	CE Dtrs	GL	BWT	200D	400D	600D	MCW	MILK	DTC	SS	CWT	EMA	RIB	P8	RBY	IMF	ABI	DOM	GRAIN	GRASS
<b>EBV</b>	<b>+4.4</b>	<b>+6.7</b>	<b>-2.9</b>	<b>+6.0</b>	<b>+55</b>	<b>+100</b>	<b>+128</b>	<b>+111</b>	<b>+17</b>	<b>-10.2</b>	<b>+5.2</b>	<b>+72</b>	<b>+4.5</b>	<b>+1.4</b>	<b>+1.5</b>	<b>-1.3</b>	<b>+5.3</b>	<b>+\$176</b>	<b>+\$140</b>	<b>+\$220</b>	<b>+\$151</b>
<b>(Acc)</b>	60%	54%	85%	75%	70%	70%	70%	67%	59%	45%	73%	66%	65%	69%	66%	67%	64%				
<b>Perc</b>	37	15	75	87	12	10	16	23	41	1	1	18	73	9	7	98	1	1	1	1	1

**SEMEN  
AVAILABLE**

\$45 per straw  
100+ \$35

**Agri-Gene Pty Ltd**

P: 03 5722 2666 F: 03 5722 2777

E: [info@agrigene.com.au](mailto:info@agrigene.com.au) | [www.agrigene.com.au](http://www.agrigene.com.au)



**K KELLY  
V ANGUS**





## Welcome

Vicki and I warmly welcome you and your family to our first on farm bull sale. Our journey to this point has been exciting, productive and now very rewarding, as we are positioned to offer at Auction 50 - 18-month-old bulls with depth, calving ease, good growth and carcase quality.

With the less than favourable 2019 behind us, we are off to a mixed start to 2020. We send our deepest thoughts out to the many people affected by the fires on top of the drought. It has been great to see and hear from people, both locally and in the North, that they are getting some relief from the drought. We know it's not everyone, but at least it hasn't forgotten how to rain. We wish everyone a safe and happy 2020.

Kelly Angus are currently running about 600 HBR and APR females. We use a fixed time AI program and back up this program with our own yearling bulls

to benchmark ourselves. We have adopted Genomic testing throughout the herd with all calves tested each year. This allows us to provide enhanced EBVs.

With our base herd we have focused on fertility, structure, depth of body and carcase. We run our females in large contemporary groups to truly get the best out of them. By doing this, we can identify the cows that will push through in tough times and still wean a good calf. The herd we have built up to date truly represents easy doing off grass "clean and green".

For the carcase side of things, we have spent lots of time selecting and blending bulls that will work with our female herd. We have quite a lot of marbling throughout the herd. We are striving to increase this without compromising other traits. We are starting to see some premiums for

this trait and it will certainly increase in demand as time goes on.

We are working hard to help our clients with some end markets for offspring that will pay dividends for them. We are getting great feedback from possessors that animals are grading exceptionally well, not to mention that bullock finishers are getting great results off grass with high marbling.

On sale day we will have our semen sire, Kelly Angus Parthenon P199 on display, semen is marketed via Agri Gene.

We will be offering multiple sire lines in the sale that represent what we are aiming to achieve.


We look forward to welcoming you on sale day.

**Patrick Joyce**


# Inaugural Bull Sale

**25th MARCH 2020**

**50 ANGUS BULLS - 18 MONTH OLD**  
**SALE 11 AM | INSPECTIONS FROM 8:30 AM**  
 LUNCH TO FOLLOW SALE

 Patrick Joyce 0434 559 101

**Sale Location:** On Farm:  
 171 Nashs Road, Yea VIC 3717

 [kellyangus.com.au](http://kellyangus.com.au)



**Elders Yea**

**Bruce Elliott** 0409 699 937  
**Jamie Quinlan** 0419 894 232

**Elders Mansfield**

**Ryan Sargeant** 0407 649 906

**Elders Pakenham**

**Carlo Taranto** 0418 368 739

**Elders Stud Stock**

**Ross Milne** 0408 057 558  
**Jenni O'Sullivan** 0428 222 080



**GTSM**

**Michael Glasser**  
 0403 526 702



**AuctionsPlus**

*Buy and Sell stock nationally*

# Sale information

## **Sale Time/Inspections**

The sale will commence at 11am on Wednesday 25th March 2020. Inspections from 8:30am on Sale Day or at any other time by appointment.

## **Insurance**

From the fall of the hammer bulls become the responsibility of the purchaser. Peter Barry from Elders Insurance will be in attendance on the day.

## **Genetic Testing**

All bulls with any probability of genetic disorders have been tested. Of the 50 bulls catalogued All are DD, CA and NH free, only 2 bulls are AM carriers.

## **Bull Health**

All bulls catalogued for sale have passed semen testing, certificates are available if required. All bulls are tested negative for Pestivirus. All sale bulls are fully vaccinated with Pestigard, 7 in 1 and Vibrovax and have also had Selovin LA and Bomection injectable drench.

## **Biosecurity**

Kelly Angus hold current status of J-BAS 8

## **Free Delivery**

We will endeavour to personally deliver your bulls to your property. For interstate clients we will arrange transport as soon as possible.

## **Rebate**

A 6% rebate will apply to agents that introduce their clients prior to the sale and attend the sale with or on behalf of clients. Accounts must be settled within 10 days.

## **Catering**

Morning tea will be provided before the sale. Kelly Angus Beef will be served as a buffet lunch at the conclusion of the sale.

## **Safety**

All sale bulls are quiet to handle and we have the upmost of confidence in their temperament. Sale day places added pressure on the bulls and we ask that you use caution while inspecting the bulls. Visitors enter bull pens at their own risk. Children must be supervised at all times.

## **Quality Assurance**

To ensure we provide our clients a product that is of the highest quality we have strict procedures that are followed from birth.

All calves are tagged at birth with a management tag and NLIS tag. They are weighed and DNA collected via TSU. From this sample we verify parentage, genomic test, pesti test and test for genetic defects if there is any probability in the pedigree.

Calves are vaccinated at 4-6 weeks with 7 in 1, a boosted shot is given between 8-10 weeks of age.

At weaning calves are weighed and receive a triple acting oral drench, Selovin LA, and are vaccinated with Pestigard and IBR MH. Booster shots are given as required. Mature Cow Weights are also recorded at weaning.

All weaner bulls are kept in the one management group until 400 day weights are recorded along with Ultrasound Scanning for EMA, Fats and IMF. Scrotal Size and any abnormalities are also recorded. At that point any culls are removed.

At around 16 months the bulls are independently structurally assessed and docility scored. At this time bulls are also semen tested and vaccinated with Vibrovax.

---

## **Disclaimer**

Whilst all due care and attention have been paid in the compilation of this catalogue, neither the vendor nor the selling agents or the representative(s) thereof assume any responsibility whatsoever for the correctness, use or interpretation of the information in this sale catalogue.



**REFERENCE SIRE**  
AYRVALE HERCULES H9



**REFERENCE SIRE**  
LAWSONS INTENSITY L199

**RS AYRVALE HERCULES H9<sup>PV</sup> H10H9**

DOB: 01/09/2012

Registration Status: HBR

Genetic Status: AMF,CAF,DDF,NHF

B/R NEW DIMENSION 7127<sup>SV</sup>  
TE MANIA BARTEL B219<sup>PV</sup>  
TE MANIA JEDDA W85<sup>#</sup>

LAWSONS INVINCIBLE C402<sup>PV</sup>  
G A R SOLUTION<sup>SV</sup>  
LAWSONS PREDESTINED A598<sup>#</sup>

Sire: H10E7 AYRVALE BARTEL E7<sup>PV</sup>

Dam: VLYF338 LAWSONS INVINCIBLE F338<sup>SV</sup>

MYTTY IN FOCUS<sup>#</sup>  
EAGLEHAWK JEDDA B32<sup>SV</sup>  
EAGLEHAWK JEDDA Z48<sup>#</sup>

TC TOTAL 410<sup>#</sup>  
LAWSONS TOTAL D1152<sup>#</sup>  
LAWSONS YIELD GRADE A555<sup>SV</sup>

**February 2020 TransTasman Angus Cattle Evaluation**

TACE	Dir	Dtrs	GL	BW	200 W	400 W	600 W	MCW	Milk
EBV	+5.5	+7.4	-8.5	+2.0	+49	+87	+112	+79	+25
ACC	91%	79%	99%	99%	98%	98%	97%	93%	92%
SS	D t C	CWT	EMA	Rib	Rump	RBV	IMF	NFI-F	Doc
+0.7	-5.7	+81	+9.6	-0.7	-1.3	+0.2	+3.7	+0.66	+12
98%	64%	88%	90%	91%	90%	87%	89%	76%	98%

**Selection Indexes**

ABI	DOM	HGN	HGS
\$144	\$127	\$165	\$132

*Traits Observed:* GL,BWT,200WT,Scan(EMA,Rib,Rump,IMF),Genomics

*Statistics:* Number of Herds: 41, Prog Analysed: 1276, Genomic Prog: 486

**RS LAWSONS INTENSITY L199<sup>PV</sup> VLYL199**

DOB: 22/09/2015

Registration Status: HBR

Genetic Status: AMFU,CAFU,DDFU,NHFU

G A R NEW DESIGN 5050<sup>#</sup>  
G A R INGENUITY<sup>#</sup>  
G A R OBJECTIVE 1067<sup>#</sup>

TE MANIA BARTEL B219<sup>PV</sup>  
AYRVALE BARTEL E7<sup>PV</sup>  
EAGLEHAWK JEDDA B32<sup>SV</sup>

Sire: USA17366506 H P C A INTENSITY<sup>#</sup>

Dam: VLYJ252 LAWSONS BARTEL E7 J252<sup>PV</sup>

G A R PREDESTINED<sup>#</sup>  
G A R PREDESTINED 287L<sup>#</sup>  
G A R OBJECTIVE 1885<sup>#</sup>

LAWSONS TANK X1235<sup>#</sup>  
LAWSONS TANK G1196<sup>SV</sup>  
LAWSONS ROCKY W129 A679<sup>PV</sup>

**February 2020 TransTasman Angus Cattle Evaluation**

TACE	Dir	Dtrs	GL	BW	200 W	400 W	600 W	MCW	Milk
EBV	+1.4	+2.2	-5.8	+5.6	+55	+103	+132	+115	+25
ACC	70%	59%	95%	90%	83%	83%	80%	77%	69%
SS	D t C	CWT	EMA	Rib	Rump	RBV	IMF	NFI-F	Doc
+2.0	-8.4	+75	+7.3	-0.6	+1.0	+0.4	+2.5	+0.16	-
80%	50%	74%	72%	76%	74%	72%	72%	60%	-

**Selection Indexes**

ABI	DOM	HGN	HGS
\$152	\$131	\$171	\$141

*Traits Observed:* GL,BWT,200WT(x2),400WT,SC,Scan(EMA,Rib,Rump,IMF),Genomics

*Statistics:* Number of Herds: 1, Prog Analysed: 39, Genomic Prog: 19



**REFERENCE SIRE**  
PA FULL POWER 1208



**REFERENCE SIRE**  
PRIME KATAPULT K1

**RS**

**PA FULL POWER 1208<sup>PV</sup>**

**USA16981588**

DOB: 14/02/2011

Registration Status: HBR

Genetic Status: AMF,CAF,DDF,NHF

B/R NEW DESIGN 036#  
G A R PREDESTINED#  
G A R EXT 4206#

B/R NEW DESIGN 036#  
G A R NEW DESIGN 5050#  
G A R PRECISION 706#

Sire: USA16381311 PA POWER TOOL 9108<sup>SV</sup>  
BON VIEW NEW DESIGN 208<sup>SV</sup>  
SHAMROCK'S BEEBEE QUEEN 3095#  
SHAMROCK'S BEEBEE QUEEN 1823#

Dam: USA16408070 PINE VIEW SQR RITA W091#  
S V F BANDOLIER#  
PINE VIEW RITA R084#  
G A R 1407 NEW DESIGN 1552#

**February 2020 TransTasman Angus Cattle Evaluation**

TACE	Dir	Dtrs	GL	BW	200 W	400 W	600 W	MCW	Milk
EBV	-5.3	-3.5	-5.5	+3.3	+53	+96	+119	+81	+13
ACC	89%	73%	99%	98%	97%	97%	97%	94%	92%

**Selection Indexes**

ABI	DOM	HGN	HGS
\$136	\$124	\$151	\$129

SS	D t C	CWT	EMA	Rib	Rump	RBV	IMF	NFI-F	Doc
+2.0	-4.5	+66	+11.8	-0.4	-0.5	+0.8	+3.1	+0.95	+18
96%	60%	90%	90%	90%	88%	86%	89%	72%	97%

Traits Observed: Genomics

Statistics: Number of Herds: 56, Prog Analysed: 765, Genomic Prog: 168

**RS**

**PRIME KATAPULT K1<sup>SV</sup>**

**CXBK1**

DOB: 15/01/2014

Registration Status: HBR

Genetic Status: AMFU,CAFU,DDFU,NHFU

SITZ TRAVELER 8180#  
S A V FINAL ANSWER 0035#  
S A V EMULOUS 8145#

TE MANIA BERKLEY B1<sup>PV</sup>  
TE MANIA EMPEROR E343<sup>PV</sup>  
TE MANIA LOWAN Z74<sup>PV</sup>

Sire: USA16396499 S A V THUNDERBIRD 9061<sup>SV</sup>  
S A V BISMARCK 5682#  
S A V EMBLYNETTE 7411#  
S A V EMBLYNETTE 4408#

Dam: CXBH81 PRIME JEDDA H81#  
TE MANIA ULONG U41<sup>SV</sup>  
PRIME JEDDA E36#  
PRIME JEDDA A92#

**February 2020 TransTasman Angus Cattle Evaluation**

TACE	Dir	Dtrs	GL	BW	200 W	400 W	600 W	MCW	Milk
EBV	+10.2	+2.2	-12.1	+1.7	+56	+102	+134	+106	+19
ACC	76%	62%	98%	96%	92%	93%	91%	82%	75%

**Selection Indexes**

ABI	DOM	HGN	HGS
\$136	\$127	\$141	\$135

SS	D t C	CWT	EMA	Rib	Rump	RBV	IMF	NFI-F	Doc
+3.3	-3.8	+69	+6.1	+0.5	-1.4	+1.3	+1.5	+0.25	+3
92%	55%	79%	81%	83%	81%	77%	80%	65%	78%

Traits Observed: GL,BWT,200WT,400WT,Scan(EMA, Rib,Rump,IMF),Genomics

Statistics: Number of Herds: 23, Prog Analysed: 322, Genomic Prog: 108



**REFERENCE SIRE**  
**RENNYLEA KODAK K522**



**REFERENCE SIRE**  
**TEXAS GLOBAL G563**

**RS**

**RENNYLEA KODAK K522<sup>SV</sup>**

**NORK522**

DOB: 11/08/2014

Registration Status: HBR

Genetic Status: AMFU, CAFU, DDFU, NHFU

BOOROOMOOKA UNDERTAKEN U170<sup>PV</sup>  
BOOROOMOOKA UNDERTAKEN Y145<sup>PV</sup>  
BOOROOMOOKA UAAISE U101<sup>SV</sup>

TE MANIA YORKSHIRE Y437<sup>PV</sup>  
TE MANIA BERKLEY B1<sup>PV</sup>  
TE MANIA LOWAN Z53<sup>#</sup>

Sire: NORE11 RENNYLEA EDMUND E11<sup>PV</sup>  
YTHANBRAE HENRY VIII U8<sup>SV</sup>  
LAWSONS HENRY VIII Y5<sup>SV</sup>  
YTHANBRAE DIRECTION T270<sup>#</sup>

Dam: NORF810 RENNYLEA EISA ERICA F810<sup>#</sup>  
HYLINE RIGHT TIME 338<sup>#</sup>  
RENNYLEA EISA ERICA C299<sup>PV</sup>  
RENNYLEA EISA ERICA X571<sup>#</sup>

**February 2020 TransTasman Angus Cattle Evaluation**

TACE	Dir	Dtrs	GL	BW	200 W	400 W	600 W	MCW	Milk
<b>EBV</b>	<b>+12.3</b>	<b>+10.4</b>	<b>-6.5</b>	<b>+1.6</b>	<b>+47</b>	<b>+90</b>	<b>+120</b>	<b>+120</b>	<b>+15</b>
ACC	78%	67%	99%	98%	97%	97%	96%	85%	74%

**Selection Indexes**

ABI	DOM	HGN	HGS
\$159	\$130	\$190	\$141

SS	D t C	CWT	EMA	Rib	Rump	RBV	IMF	NFI-F	Doc
<b>+4.6</b>	<b>-9.0</b>	<b>+66</b>	<b>+3.8</b>	<b>+2.6</b>	<b>+1.7</b>	<b>-0.7</b>	<b>+3.9</b>	<b>+0.86</b>	<b>-9</b>
96%	62%	90%	90%	91%	89%	88%	88%	83%	93%

*Traits Observed:* GL, BWT, 200WT, 400WT, 600WT, SC, Scan(EMA, Rib, Rump, IMF), DOC, Genomics

*Statistics:* Number of Herds: 38, Prog Analysed: 1067, Genomic Prog: 335

**RS**

**TEXAS GLOBAL G563<sup>PV</sup>**

**DXTG563**

DOB: 31/08/2011

Registration Status: HBR

Genetic Status: AMFU, CAFU, DDF, NHFU

B/R NEW DESIGN 036<sup>#</sup>  
BON VIEW NEW DESIGN 1407<sup>#</sup>  
BON VIEW PRIDE 664<sup>#</sup>

O S U 6T6 ULTRA<sup>#</sup>  
B T ULTRAVOX 297E<sup>#</sup>  
FINKS VIXON 788<sup>#</sup>

Sire: USA14474596 SITZ NEW DESIGN 458N<sup>#</sup>  
SITZ TRAVELER 9929<sup>#</sup>  
SITZ ELLUNAS ELITE 3308<sup>#</sup>  
SITZ ELLUNAS ELITE 2872<sup>#</sup>

Dam: DXTZ036 TEXAS UNDINE Z036<sup>SV</sup>  
STEVENSON FORTUNE 425C<sup>#</sup>  
TEXAS UNDINE W63<sup>#</sup>  
TEXAS UNDINE S93<sup>#</sup>

**February 2020 TransTasman Angus Cattle Evaluation**

TACE	Dir	Dtrs	GL	BW	200 W	400 W	600 W	MCW	Milk
<b>EBV</b>	<b>+1.5</b>	<b>-2.6</b>	<b>-1.5</b>	<b>+5.0</b>	<b>+57</b>	<b>+106</b>	<b>+138</b>	<b>+122</b>	<b>+18</b>
ACC	79%	68%	98%	97%	96%	96%	95%	92%	87%

**Selection Indexes**

ABI	DOM	HGN	HGS
\$138	\$124	\$144	\$135

SS	D t C	CWT	EMA	Rib	Rump	RBV	IMF	NFI-F	Doc
<b>+4.3</b>	<b>-4.2</b>	<b>+66</b>	<b>+6.4</b>	<b>+0.9</b>	<b>+1.9</b>	<b>+0.6</b>	<b>+1.7</b>	<b>+0.31</b>	<b>+13</b>
94%	63%	91%	89%	88%	87%	84%	88%	70%	89%

*Traits Observed:* 200WT, 400WT, 600WT, SC, Scan(EMA, Rib, Rump, IMF), Genomics

*Statistics:* Number of Herds: 16, Prog Analysed: 378, Genomic Prog: 39





**REFERENCE SIRE**  
TEXAS MOUNT K002



**REFERENCE SIRE**  
V A R INDEX 3282

**RS** **TEXAS MOUNT K002<sup>PV</sup>** **DXTK002**

DOB: 06/02/2014

Registration Status:HBR

Genetic Status: **AMFU,CAFU,DDFU,NHFU**

N BAR PRIME TIME D806#  
GARDENS PRIME STAR#  
GREEN GARDEN JILT C242 S1#  
Sire: USA15848590 KC HAAS GPS#  
B/R DESTINATION 727-928#  
KCH ELINE 549#  
K C H ELINE 263#

BON VIEW NEW DESIGN 1407#  
BUSHES GRAND DESIGN#  
BUSHES LADY DIVIDEND 872#  
Dam: DXTZ183 TEXAS UNDINE Z183<sup>PV</sup>  
VERMILION YELLOWSTONE#  
TEXAS UNDINE X221#  
TEXAS UNIDINER R42#

**February 2020 TransTasman Angus Cattle Evaluation**

TACE	Dir	Dtrs	GL	BW	200 W	400 W	600 W	MCW	Milk
<b>EBV</b>	<b>+7.1</b>	<b>+4.8</b>	<b>-8.7</b>	<b>+4.1</b>	<b>+52</b>	<b>+103</b>	<b>+138</b>	<b>+144</b>	<b>+11</b>
ACC	86%	69%	99%	98%	98%	98%	97%	92%	89%

SS	D t C	CWT	EMA	Rib	Rump	RBV	IMF	NFI-F	Doc
<b>+3.7</b>	<b>-4.2</b>	<b>+69</b>	<b>+1.3</b>	<b>-0.9</b>	<b>-0.2</b>	<b>-0.4</b>	<b>+2.0</b>	<b>-0.41</b>	<b>-16</b>
97%	59%	88%	90%	90%	88%	85%	87%	72%	96%

**Selection Indexes**

ABI	DOM	HGN	HGS
\$132	\$118	\$146	\$127

*Traits Observed:* BWT,200WT,400WT(x2),SC, Scan(EMA,Rib,Rump,IMF),Genomics

*Statistics:* Number of Herds: 39, Prog Analysed: 1242, Genomic Prog: 298

**RS** **V A R INDEX 3282<sup>PV</sup>** **USA17513381**

DOB: 01/04/2013

Registration Status:HBR

Genetic Status: **AMF,CAF,DDF,NHF**

B/R NEW DESIGN 036#  
G A R NEW DESIGN 5050#  
G A R PRECISION 706#  
Sire: USA16497066 G A R INGENUITY#  
S S OBJECTIVE T510 0T26#  
G A R OBJECTIVE 1067#  
G A R RETAIL PRODUCT 2195#

CONNEALY LEAD ON#  
CONNEALY ONWARD#  
ALTUNE OF CONANGA 6104#  
G A R GRID MAKER#  
Dam: USA16143141 SANDPOINT BLACKBIRD 8809#  
RIVERBEND BLACKBIRD 4301#  
RIVERBEND BLACKBIRD 2204#

**February 2020 TransTasman Angus Cattle Evaluation**

TACE	Dir	Dtrs	GL	BW	200 W	400 W	600 W	MCW	Milk
<b>EBV</b>	<b>+5.8</b>	<b>+3.4</b>	<b>-4.5</b>	<b>+4.0</b>	<b>+54</b>	<b>+100</b>	<b>+120</b>	<b>+99</b>	<b>+24</b>
ACC	79%	64%	98%	98%	96%	96%	96%	93%	88%

SS	D t C	CWT	EMA	Rib	Rump	RBV	IMF	NFI-F	Doc
<b>+0.3</b>	<b>-3.7</b>	<b>+70</b>	<b>+14.3</b>	<b>-0.6</b>	<b>-1.2</b>	<b>+2.6</b>	<b>+2.0</b>	<b>+0.04</b>	<b>+0</b>
95%	56%	88%	87%	88%	85%	82%	87%	67%	92%

**Selection Indexes**

ABI	DOM	HGN	HGS
\$146	\$140	\$155	\$141

*Traits Observed:* Genomics

*Statistics:* Number of Herds: 32, Prog Analysed: 492, Genomic Prog: 104

**RS ALLOURA GET CRACKING G10<sup>SV</sup> DGJG10**

DOB: 14/08/2011

Registration Status:HBR

Genetic Status: **AMFU,CAFU,DDF,NHFU**

S A F FOCUS OF E R<sup>#</sup>  
TE MANIA YORKSHIRE Y437<sup>PV</sup>  
TE MANIA LOWAN U275<sup>#</sup>

G A R PRECISION 1680<sup>#</sup>  
C A FUTURE DIRECTION 5321<sup>#</sup>  
C A MISS POWER FIX 308<sup>#</sup>

Sire: VTMB1 TE MANIA BERKLEY B1<sup>PV</sup>

Dam: DGJZ15 ALLOURA JEDDA Z15<sup>#</sup>

KENNY'S CREEK SANDY S15<sup>SV</sup>  
TE MANIA LOWAN Z53<sup>#</sup>  
TE MANIA LOWAN V129<sup>#</sup>

B/R NEW DIMENSION 7127<sup>SV</sup>  
ALLOURA JEDDA X07<sup>#</sup>  
TE MANIA JEDDA U380<sup>#</sup>

**February 2020 TransTasman Angus Cattle Evaluation**

TACE	Dir	Dtrs	GL	BW	200 W	400 W	600 W	MCW	Milk
<b>EBV</b>	<b>+10.2</b>	<b>+9.4</b>	<b>-3.9</b>	<b>+2.9</b>	<b>+44</b>	<b>+79</b>	<b>+88</b>	<b>+78</b>	<b>+10</b>
ACC	79%	68%	98%	98%	97%	97%	96%	91%	85%

SS	D t C	CWT	EMA	Rib	Rump	RBV	IMF	NFI-F	Doc
<b>-0.2</b>	<b>-7.8</b>	<b>+53</b>	<b>+14.0</b>	<b>+0.6</b>	<b>+0.1</b>	<b>+0.1</b>	<b>+4.9</b>	<b>+0.73</b>	<b>-16</b>
95%	67%	91%	90%	92%	89%	86%	88%	86%	93%

**Selection Indexes**

ABI	DOM	HGN	HGS
\$154	\$138	\$187	\$135

**Traits Observed:** GL,CE,BWT,200WT,400WT,600WT, SC,Scan(EMA,Rib,Rump,IMF),Genomics

**Statistics:** Number of Herds: 20, Prog Analysed: 596, Genomic Prog: 140

**RS KELLY ANGUS INCREDIBLE M112<sup>SV</sup> GXNM112**

DOB: 30/08/2016

Registration Status:HBR

Genetic Status: **AMFU,CAFU,DDFU,NH1%**

TE MANIA BARTEL B219<sup>PV</sup>  
AYRVALE BARTEL E7<sup>PV</sup>  
EAGLEHAWK JEDDA B32<sup>SV</sup>

TC TOTAL 410<sup>#</sup>  
LAWSONS NOVAK E313<sup>SV</sup>  
LAWSONS PREDESTINED B770<sup>SV</sup>

Sire: VLYH803 LAWSONS INCREDIBLE H803<sup>PV</sup>

Dam: VLYJ1125 LAWSONS NOVAK J1125<sup>#</sup>

LAWSONS DINKY-DI Z191<sup>SV</sup>  
LAWSONS DINKY DI E447<sup>PV</sup>  
LAWSONS PREMIUM BEEF B773<sup>SV</sup>

B/R AMBUSH 28<sup>#</sup>  
LAWSONS AMBUSH F709<sup>#</sup>  
LAWSONS NEW DESIGN 1407 Z129 C825<sup>#</sup>

**February 2020 TransTasman Angus Cattle Evaluation**

TACE	Dir	Dtrs	GL	BW	200 W	400 W	600 W	MCW	Milk
<b>EBV</b>	<b>+0.8</b>	<b>+3.4</b>	<b>-4.8</b>	<b>+4.7</b>	<b>+62</b>	<b>+104</b>	<b>+138</b>	<b>+113</b>	<b>+25</b>
ACC	62%	53%	70%	76%	72%	72%	71%	70%	64%

SS	D t C	CWT	EMA	Rib	Rump	RBV	IMF	NFI-F	Doc
<b>+1.1</b>	<b>-5.0</b>	<b>+79</b>	<b>+6.8</b>	<b>-2.7</b>	<b>-1.6</b>	<b>+0.5</b>	<b>+3.4</b>	<b>+0.11</b>	-
69%	45%	66%	64%	68%	66%	64%	63%	54%	-

**Selection Indexes**

ABI	DOM	HGN	HGS
\$148	\$128	\$171	\$137

**Traits Observed:** BWT,200WT,400WT,SC,Scan(EMA, Rib,Rump,IMF)

**Statistics:** Number of Herds: 1, Prog Analysed: 6, Genomic Prog: 0

**RS T C A VISIONARY 158<sup>SV</sup> USA16972676**

DOB: 14/03/2011

Registration Status:HBR

Genetic Status: **AMF,CAF,DDF,NHF**

SVF GDAR 216 LTD<sup>#</sup>  
S A F CONNECTION<sup>#</sup>  
S A F ROYAL QUEEN 5084<sup>#</sup>

S A F 598 BANDO 5175<sup>#</sup>  
S A V 5175 BANDO 4597<sup>#</sup>  
CHAMPION HILL BLOSSOM 1611<sup>#</sup>

Sire: USA15330743 SYDGEN C C & 7<sup>#</sup>

Dam: USA15487593 T C A TREASURE 0699 601<sup>#</sup>

SYDGEN 1407 CORONA 2016<sup>#</sup>  
SYDGEN FOREVER LADY 4087<sup>#</sup>  
S A F FOREVER LADY 8292<sup>#</sup>

BON VIEW NEW DESIGN 1407<sup>#</sup>  
SWEETWATER TREASURE 73M<sup>#</sup>  
SWEETWATER TREASURE 0149<sup>#</sup>

**February 2020 TransTasman Angus Cattle Evaluation**

TACE	Dir	Dtrs	GL	BW	200 W	400 W	600 W	MCW	Milk
<b>EBV</b>	<b>+11.0</b>	<b>-0.4</b>	<b>-4.6</b>	<b>+2.2</b>	<b>+48</b>	<b>+80</b>	<b>+107</b>	<b>+88</b>	<b>+15</b>
ACC	83%	65%	98%	98%	96%	96%	95%	89%	88%

SS	D t C	CWT	EMA	Rib	Rump	RBV	IMF	NFI-F	Doc
<b>+2.2</b>	<b>-4.8</b>	<b>+59</b>	<b>+12.6</b>	<b>-0.4</b>	<b>-1.0</b>	<b>+2.7</b>	<b>+1.7</b>	<b>+0.54</b>	<b>+27</b>
95%	55%	87%	88%	88%	85%	83%	86%	68%	81%

**Selection Indexes**

ABI	DOM	HGN	HGS
\$134	\$124	\$140	\$130

**Traits Observed:** Genomics

**Statistics:** Number of Herds: 10, Prog Analysed: 150, Genomic Prog: 60

VK



## A BRIEF GUIDE TO

# TACE

## TransTasman Angus Cattle Evaluation

TACE is the genetic evaluation program adopted by Angus Australia for Angus and Angus influenced beef cattle. TACE uses Best Linear Unbiased Prediction (BLUP) technology to produce Estimated Breeding Values (EBVs) of recorded cattle for a range of important production traits.

TACE analyses are conducted by the Agricultural Business Research Institute (ABRI), using software developed by the Animal Genetics and Breeding Unit (AGBU), a joint institute of NSW Agriculture and the University of New England. Ongoing BREEDPLAN research and development is supported by Meat and Livestock Australia. TACE includes pedigree, performance and genomic information from the Angus Australia and New Zealand Angus Association databases to evaluate the genetics of animals across Australia and New Zealand.

### What is an EBV?

An animal's breeding value can be defined as its genetic merit for each trait. While it is not possible to determine an animal's true breeding value, it is possible to estimate it. These estimates of an animal's true breeding value are called EBVs (Estimated Breeding Values). TACE EBVs are expressed as the difference between an individual animal's genetics and

a historical genetic level (i.e. group of animals) within the TACE genetic evaluation, and are reported in the units in which the measurements are taken. EBVs are calculated for a range of traits within TACE, covering calving ease, growth, fertility, maternal performance, carcass merit, feed efficiency, temperament and structural soundness.

### Using EBVs to Benchmark an Animal's Genetics with the Breed

TACE EBVs can be used to benchmark an animal's genetics relative to the genetics of other Angus or Angus influenced animals in Australia and New Zealand. To benchmark an animal's genetics relative to other Angus animals, an animal's EBV can be compared to:

- the breed average EBV
- the percentile table

© Angus Australia, April 2019

The current breed average and percentile table for each EBV can be found on the Angus Australia website, or they are normally listed in most TACE reports, sale and semen catalogues.

### Using EBVs to Compare the Genetics of Two Animals

TACE EBVs can be used to estimate the expected difference in the genetics of two animals, with the expected

difference equating to half the difference in the EBVs of the animals, all other things being equal (e.g. they are joined to the same animal/s). For example, a bull with an IMF EBV of +3.0 would be expected to produce progeny with on average, 1% more intramuscular fat in a 400 kg carcass than a bull with a IMF EBV of +1.0 (i.e. 2% difference between the sire's EBVs, then halved as the sire only contributes half the genetics). Importantly, TACE EBVs can only be used to estimate the difference in the genetics of two animals who both have TACE EBVs. TACE EBVs are not directly comparable with BREEDPLAN EBVs calculated in other genetic evaluations.

### Considering Accuracy

An accuracy value is published in association with each EBV, which is usually displayed as a percentage value immediately below the EBV. The accuracy value provides an indication of the reliability of the EBV in estimating the animal's genetics (or true breeding value), and is an indication of the amount of information that has been used in the calculation of the EBV. TACE EBVs with accuracy values below 50% should be considered as preliminary or of low accuracy, 50-74% as of medium accuracy, 75-90% of medium to high accuracy, and 90% or greater as high accuracy.

<b>BIRTH</b>			
Calving Ease Direct	%	Genetic differences in the ability of a sire's calves to be born unassisted from 2 year old heifers.	Higher EBVs indicate fewer calving difficulties in 2 year old heifers.
Calving Ease Daughters	%	Genetic differences in the ability of a sire's daughters to calve unassisted at 2 years of age.	Higher EBVs indicate fewer calving difficulties in 2 year old heifers.
Gestation Length	days	Genetic differences between animals in the length of time from the date of conception to the birth of the calf.	Lower EBVs indicate shorter gestation length.
Birth Weight	kg	Genetic differences between animals in calf weight at birth.	Lower EBVs indicate lighter birth weight.
<b>GROWTH</b>			
200 Day Growth	kg	Genetic differences between animals in live weight at 200 days of age due to genetics for growth.	Higher EBVs indicate heavier live weight.
400 Day Weight	kg	Genetic differences between animals in live weight at 400 days of age.	Higher EBVs indicate heavier live weight.
600 Day Weight	kg	Genetic differences between animals in live weight at 600 days of age.	Higher EBVs indicate heavier live weight.
Mature Cow Weight	kg	Genetic differences between animals in live weight of cows at 5 years of age.	Higher EBVs indicate heavier mature weight.
Milk	kg	Genetic differences between animals in live weight at 200 days of age due to the maternal contribution of its dam.	Higher EBVs indicate heavier live weight.
<b>FERTILITY</b>			
Days to Calving	days	Genetic differences between animals in the time from the start of the joining period (i.e. when the female is introduced to a bull) until subsequent calving.	Lower EBVs indicate shorter time to calving.
Scrotal Size	cm	Genetic differences between animals in scrotal circumference at 400 days of age.	Higher EBVs indicate larger scrotal circumference.
Calving Ease Direct	%	Genetic differences in the ability of a sire's calves to be born unassisted from 2 year old heifers.	Higher EBVs indicate fewer calving difficulties in 2 year old heifers.
<b>CARCASE</b>			
Carcase Weight	kg	Genetic differences between animals in hot standard carcass weight at 750 days of age.	Higher EBVs indicate heavier carcass weight.
Eye Muscle Area	cm <sup>2</sup>	Genetic differences between animals in eye muscle area at the 12/13th rib site in a 400 kg carcass.	Higher EBVs indicate larger eye muscle area.
Rib Fat	mm	Genetic differences between animals in fat depth at the 12/13th rib site in a 400 kg carcass.	Higher EBVs indicate more fat.
Rump Fat	mm	Genetic differences between animals in fat depth at the P8 rump site in a 400 kg carcass.	Higher EBVs indicate more fat.
Retail Beef Yield	%	Genetic differences between animals in boned out saleable meat from a 400 kg carcass.	Higher EBVs indicate higher yield.
Intramuscular Fat	%	Genetic differences between animals in intramuscular fat (marbling) at the 12/13th rib site in a 400 kg carcass.	Higher EBVs indicate more intramuscular fat.
<b>FEED EFFICIENCY</b>			
Net Feed Intake (Feedlot)	kg/day	Genetic differences between animals in feed intake at a standard weight and rate of weight gain when animals are in a feedlot finishing phase.	Lower EBVs indicate more feed efficiency.
<b>TEMPERAMENT</b>			
Docity	%	Genetic differences between animals in temperament.	Higher EBVs indicate better temperament.

<b>STRUCTURE</b>			
Front Feet Angle	%	Genetic differences between animals in desirable front feet angle (strength of pastern, depth of heel).	Higher EBVs indicate more desirable structure.
Front Feet Claw Set	%	Genetic differences between animals in desirable front feet claw set structure (shape and evenness of claw).	Higher EBVs indicate more desirable structure.
Rear Feet Angle	%	Genetic differences between animals in desirable rear feet angle (strength of pastern, depth of heel).	Higher EBVs indicate more desirable structure.
Rear Leg Hind View	%	Genetic differences between animals in desirable rear leg structure when viewed from the side.	Higher EBVs indicate more desirable structure.
Rear Leg Side View	%	Genetic differences between animals in desirable rear leg structure when viewed from the side.	Higher EBVs indicate more desirable structure.
<b>SELECTION INDEXES</b>			
Angus Breeding Index	\$	Genetic differences between animals in net profitability per cow joined in a typical commercial self replacing herd using Angus bulls. This selection index is not specific to a particular production system or market end-point, but identifies animals that will improve overall profitability in the majority of commercial grass and grain finishing beef production systems.	Higher selection index values indicate greater profitability.
Domestic Index	\$	Genetic differences between animals in net profitability per cow joined in a commercial self replacing herd targeting the domestic supermarket trade.	Higher selection index values indicate greater profitability.
Heavy Grain Index	kg	Genetic differences between animals in net profitability per cow joined in a commercial self replacing herd targeting pasture grown steers with a 200 day feedlot finishing period for the grain fed high quality, highly marbled markets.	Higher selection index values indicate greater profitability.
Heavy Grass Index	kg	Genetic differences between animals in net profitability per cow joined in a commercial self replacing herd targeting pasture finished steers.	Higher selection index values indicate greater profitability.







# Understanding Genomics

Genomics is a term used to describe the analysis of the function and structure of a genome, being the complete set of DNA within a single cell or organism.

Within the beef industry, genomics is still an ever expanding technology, with a range of potential applications available within a beef enterprise, plus many more under development.

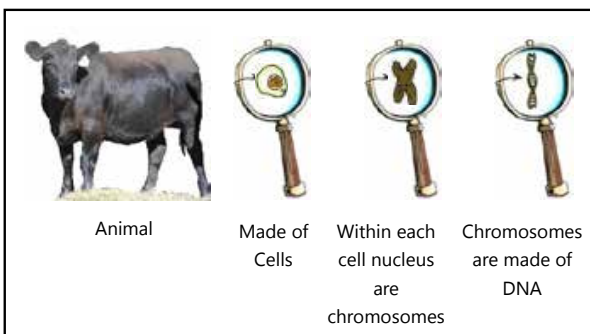
Some of the most common current applications of genomic technology include:

- Parentage Verification
- Management of Genetic Conditions
- Change in Qualitative Traits (e.g. coat colour/pollledness)
- Genetic Improvement in Production Traits
- Assessment of Breed Composition

### What is DNA?

Deoxyribonucleic acid (DNA) is an exceptionally important molecule found in the nucleus of all bovine cells. It is often described as the 'blueprint' of an organism because it codes the instructions for how that organism will develop, function and appear.

In plants and animals, DNA is bundled into chromosomes. Beef cattle have 30 chromosome pairs, each pair including one chromosome inherited from the sire and one from the dam. Because the progeny inherit chromosomes from both parents, the DNA 'blueprint' is passed on from one generation to the next.

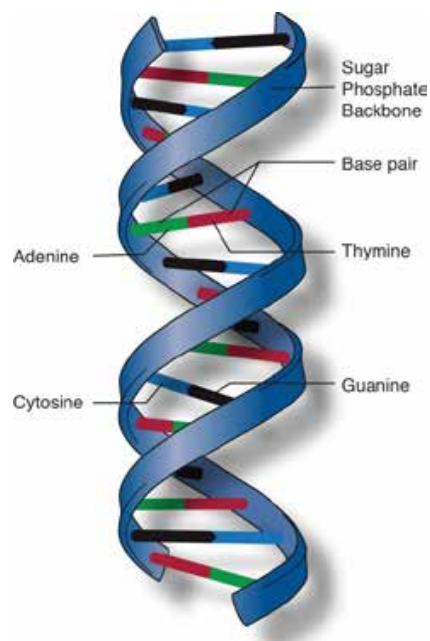


### DNA Structure

DNA looks like a long twisted ladder, or double helix. The sides of the ladder are made up of alternating sugar and phosphate molecules. The rungs connect to the sugar molecules and are known as nitrogenous bases. It is the bases which provide the key functionality of DNA and exhibit variation between individuals.

There are approximately 3 billion base pairs in bovine DNA, with four different bases, Adenine (A), Thymine (T),

Guanine (G) and Cytosine (C). Each rung of DNA is made up of two bases linked together, either G to C or T to A. The sequences of these base pairs make up the 'message' of DNA, and differences in sequences provide the basis for variation between individuals.



### What is a Gene?

A gene is a base pair sequence at a particular location on the chromosome which codes for a specific product. It is estimated there are between 22,000 and 28,000 genes in the beef animals. Genes are separated on chromosomes by areas of 'non-coding DNA' for which no function has been identified, but still make up part of the animal's genotype.

### What is an Allele?

For each gene there may be 2 or more variations, known as alleles, which can result in different phenotypes or observable characteristics. For example one of the genes influencing coat colour has three alleles, the "e" allele for red coat colour, the ED allele for black coat colour and a "Wild type" E+ allele. Which alleles the animal has, and how those alleles interact with each other determines the coat colour of the animal.

### What is a Gene Marker (or DNA Marker)?

A gene or DNA marker is a known, heritable base pair sequence which is associated with a particular gene. The DNA marker sequence does not necessarily have to be part of the gene that codes for the trait but only associated with it, therefore the value of the genetic marker will vary.

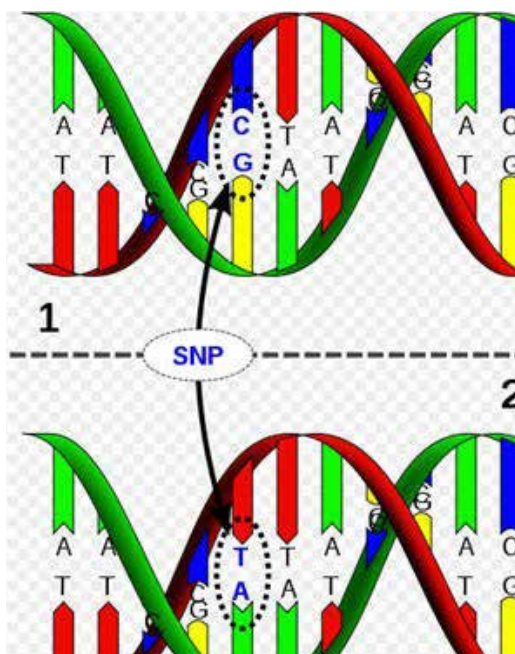


There are several types of DNA markers, but those most commonly being used in the beef industry are SNPs (pronounced "snips"), microsatellites and Indels.

#### What is a SNP?

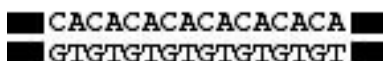
Single Nucleotide Polymorphisms (SNPs) are markers where there is a difference in a single base pair. For example, in the figure below, the top animal has a "C & G" base pair at the particular location in the DNA, whereas the bottom animal has a "T & A" base pair.

While early DNA technology only evaluated an animal's DNA for a relatively small number of SNPs, SNP chips now routinely evaluate animals at many thousands of individual SNPs. For example, DNA chips with 7,000 (i.e. 7K), 50,000 (i.e. 50K) or 800,000 (i.e. 800K) SNPs on them are now available.



#### What is a Microsatellite?

A microsatellite is a repeat of a particular base pair sequence at a specific location in an animal's DNA, for example CACACACA. The number of base pair repeats differs between animals. Microsatellites form the basis for traditional DNA parent verification, which use multiple microsatellites to determine a calves' parentage through the exclusion of possible candidates which do not have the same microsatellites.



#### Key Terms

**Trait** – Attribute or characteristic of animals that can be measured and improved genetically (for example, growth rate, fertility, carcass or meat quality)

**Genotype** – the full genetic makeup of an animal including dominant and recessive alleles that may not be expressed

**Phenotype** – the observable characteristics or traits of an animal that result from the interaction between the animal's genotype and the environment

**Locus** – the specific location of a gene or DNA sequence on a chromosome

**Allele** – one form of a gene or a genetic locus

**Homozygous** – animal carries identical alleles for a gene

**Heterozygous** – animal carries different alleles for a gene

**Dominant** – an allele is dominant over another so that the phenotype of the dominant allele is always expressed over the recessive allele

**Recessive** – an allele is recessive, so that the phenotype is only expressed when two copies of the allele are present (i.e. it is homozygous).

**Carrier** – animal which is heterozygous and 'carries' a recessive allele which is not being expressed phenotypically

#### What is an Indel?

An Indel is an insertion or deletion of a particular base pair sequence at a specific location in an animal's DNA. Indels are often associated with recessive genetic conditions.

#### What is a Genomic Prediction Equation?

As each production trait is influenced by many genes, inferring genetic merit for a particular trait requires the accumulated effects of many markers. Genomic Prediction Equations take the genotype of an animal as collected using dense SNP chips (e.g. 50,000 SNPs), to estimate the animal's breeding value based on the known effect of each SNP on the trait of interest.

For further information, please contact staff at:

Angus Australia  
Phone: 02 6773 4600  
Email: [office@angusaustralia.com.au](mailto:office@angusaustralia.com.au)  
Website: [www.angusaustralia.com.au](http://www.angusaustralia.com.au)

© Angus Australia, February 2016



## Lot 1

## KELLY ANGUS INTENSITY L199 P163<sup>SV</sup>

### GXNP163



DOB: 16/07/2018

Registration Status: HBR

Genetic Status: AMFU, CAFU, DDF, NHFU

G A R INGENUITY#

TUWHARETOA REGENT D145<sup>PV</sup>

H P C A INTENSITY#

PARINGA JUDD J5<sup>PV</sup>

G A R PREDESTINED 287L#

STRATHEWEN BERKLEY WILPENA F30<sup>PV</sup>

Sire: VLYL199 LAWSONS INTENSITY L199<sup>PV</sup>

Dam: GXNM87 KELLY ANGUS JUDD M87#

AYRVALE BARTEL E7<sup>PV</sup>

LAWSONS TANK X1235#

LAWSONS BARTEL E7 J252<sup>PV</sup>

LAWSONS TANK E232#

LAWSONS TANK G1196<sup>SV</sup>

LAWSONS CONSISTENCE B588#

### February 2020 TransTasman Angus Cattle Evaluation

### Selection Indexes

TACE	Dir	Dtrs	GL	BW	200 W	400 W	600 W	MCW	Milk
EBV	+5.8	+2.7	-8.0	+4.2	+48	+97	+123	+105	+25
ACC	54%	47%	85%	73%	66%	67%	66%	63%	56%

ABI	DOM	HGN	HGS
\$156	\$134	\$188	\$139

SS	D t C	CWT	EMA	Rib	Rump	RBV	IMF	NFI-F	Doc
+1.7	-7.0	+65	+5.4	-1.3	-0.7	+0.6	+3.8	+0.33	-
70%	38%	60%	58%	63%	60%	59%	58%	48%	-

Traits Observed: GL, CE, BWT, 200WT, 400WT, SC, Scan(EMA, Rib, Rump, IMF), Genomics

Notes: An Intensity grandson, he boasts fantastic calving ease, even growth and carcass traits that will not disappoint. Top 5% of the breed for IMF at 3.7. A true performer.

Purchaser: ..... \$: .....

## Lot 2

## KELLY ANGUS INTENSITY L199 P170<sup>SV</sup>

### GXNP170



DOB: 17/07/2018

Registration Status: HBR

Genetic Status: AMFU, CAFU, DDF, NHFU

G A R INGENUITY#

C R A BEXTOR 872 5205 608#

H P C A INTENSITY#

G A R PROPHET<sup>SV</sup>

G A R PREDESTINED 287L#

G A R OBJECTIVE 1885#

Sire: VLYL199 LAWSONS INTENSITY L199<sup>PV</sup>

Dam: GXNM15 KELLY ANGUS PROPHET M15#

AYRVALE BARTEL E7<sup>PV</sup>

AYRVALE BARTEL E7<sup>PV</sup>

LAWSONS BARTEL E7 J252<sup>PV</sup>

LAWSONS BARTEL E7 K1397#

LAWSONS TANK G1196<sup>SV</sup>

LAWSONS TANK E571#

### February 2020 TransTasman Angus Cattle Evaluation

### Selection Indexes

TACE	Dir	Dtrs	GL	BW	200 W	400 W	600 W	MCW	Milk
EBV	+7.9	+5.1	-5.3	+4.1	+57	+102	+131	+114	+24
ACC	55%	49%	85%	73%	66%	68%	66%	64%	57%

ABI	DOM	HGN	HGS
\$148	\$129	\$174	\$135

SS	D t C	CWT	EMA	Rib	Rump	RBV	IMF	NFI-F	Doc
-0.1	-6.4	+80	+5.4	-1.9	-1.8	-0.3	+3.6	-0.02	-
71%	40%	61%	59%	64%	61%	61%	59%	50%	-

Traits Observed: GL, CE, BWT, 200WT, 400WT, SC, Scan(EMA, Rib, Rump, IMF), Genomics

Notes: The only other Intensity grandson in the sale. He has the looks backed up by good calving ease, top 10% for 400d growth, top 5% for milk and carcass weight. He has fantastic carcass attributes yet soft enough to blend with most cow herds. Top 5% for ABI.

Purchaser: ..... \$: .....

## Lot 3

## KELLY ANGUS FULL POWER P258<sup>SV</sup>

### GXNP258

DOB: 19/08/2018

Registration Status: HBR

Genetic Status: AMFU, CAFU, DDF, NHFU

G A R PREDESTINED#

TC TOTAL 410#

PA POWER TOOL 9108<sup>SV</sup>

LAWSONS NOVAK E313<sup>SV</sup>

SHAMROCKS BEEBEE QUEEN 3095#

LAWSONS PREDESTINED B770<sup>SV</sup>

Sire: USA16981588 PA FULL POWER 1208<sup>PV</sup>

Dam: VLYH914 LAWSONS NOVAK H914#

G A R NEW DESIGN 5050#

WILSON DOWNS EQUATOR V191<sup>SV</sup>

PINE VIEW SQR RITA W091#

LAWSONS EQUATOR E585#

PINE VIEW RITA R084#

LAWSONS YIELD GRADE A490#

### February 2020 TransTasman Angus Cattle Evaluation

### Selection Indexes

TACE	Dir	Dtrs	GL	BW	200 W	400 W	600 W	MCW	Milk
EBV	-7.7	-0.2	-2.6	+4.8	+51	+95	+123	+108	+15
ACC	61%	52%	85%	75%	70%	71%	70%	69%	64%

ABI	DOM	HGN	HGS
\$125	\$109	\$147	\$115

SS	D t C	CWT	EMA	Rib	Rump	RBV	IMF	NFI-F	Doc
+0.8	-5.7	+62	+7.0	-1.1	-1.4	-0.4	+3.4	+0.36	-
73%	43%	65%	64%	67%	65%	64%	63%	53%	-

Traits Observed: GL, BWT, 200WT, 400WT, SC, Scan(EMA, Rib, Rump, IMF), Genomics

Notes: A real crowd favourite. A bull that would complement mature cows and have a positive impact on carcass.

Purchaser: ..... \$: .....

**Lot 4**

**KELLY ANGUS FULL POWER P192<sup>SV</sup>**

**GXNP192**

DOB: 25/07/2018 Registration Status: HBR

Genetic Status: AMF,CAFU,DDF,NHF

G A R PREDESTINED#

AYRVALE BARTEL E7<sup>PV</sup>

PA POWER TOOL 9108<sup>SV</sup>

LAWSONS INCREDIBLE H803<sup>PV</sup>

SHAMROCKS BEEBEE QUEEN 3095#

LAWSONS DINKY DI E447<sup>PV</sup>

Sire: USA16981588 PA FULL POWER 1208<sup>PV</sup>

Dam: GXNM103 KELLY ANGUS INCREDIBLE M103#

G A R NEW DESIGN 5050#

WILSON DOWNS EQUATOR V191<sup>SV</sup>

PINE VIEW SQR RITA W091#

LAWSONS EQUATOR E814#

PINE VIEW RITA R084#

LAWSONS GAR NEW DESIGN 1407 A388#

**February 2020 TransTasman Angus Cattle Evaluation**

TACE	Dir	Dtrs	GL	BW	200 W	400 W	600 W	MCW	Milk
EBV	-7.9	-2.4	-4.1	+3.8	+56	+98	+122	+80	+19
ACC	61%	52%	85%	74%	69%	70%	70%	68%	63%

SS	D t C	CWT	EMA	Rib	Rump	RBV	IMF	NFI-F	Doc
+1.6	-6.3	+64	+8.6	-0.7	+0.8	+0.5	+3.1	+0.64	-
73%	42%	64%	63%	66%	64%	63%	62%	51%	-

**Selection Indexes**

ABI	DOM	HGN	HGS
\$137	\$122	\$151	\$129

Traits Observed: GL,CE,BWT,200WT,400WT,SC, Scan(EMA,Rib,Rump,IMF),Genomics

Notes: This bull presents very well with great growth. He will mature to a moderate frame. A great carcass bull in the top 20% for all \$ indexes.

Purchaser:..... \$:.....

**Lot 5**

**KELLY ANGUS FULL POWER P244<sup>SV</sup>**

**GXNP244**



DOB: 17/08/2018 Registration Status: HBR

Genetic Status: AMF,CAFU,DDF,NHF

G A R PREDESTINED#

TUWHARETOA REGENT D145<sup>PV</sup>

PA POWER TOOL 9108<sup>SV</sup>

PARINGA JUDD J5<sup>PV</sup>

SHAMROCKS BEEBEE QUEEN 3095#

STRATHEWEN BERKLEY WILPENA F30<sup>PV</sup>

Sire: USA16981588 PA FULL POWER 1208<sup>PV</sup>

Dam: GXNM39 KELLY ANGUS JUDD M39#

G A R NEW DESIGN 5050#

TOPBOS AMBASSADOR F4<sup>PV</sup>

PINE VIEW SQR RITA W091#

LAWSONS AMBASSADOR J1228#

PINE VIEW RITA R084#

LAWSONS GRADE UP F229#

**February 2020 TransTasman Angus Cattle Evaluation**

TACE	Dir	Dtrs	GL	BW	200 W	400 W	600 W	MCW	Milk
EBV	+2.8	+1.2	-2.0	+2.8	+47	+90	+113	+70	+18
ACC	61%	52%	85%	75%	70%	70%	71%	68%	63%

SS	D t C	CWT	EMA	Rib	Rump	RBV	IMF	NFI-F	Doc
+2.1	-6.2	+70	+10.1	+0.6	+0.7	-0.2	+3.8	+0.88	-
72%	43%	65%	63%	67%	64%	64%	63%	53%	-

**Selection Indexes**

ABI	DOM	HGN	HGS
\$150	\$130	\$171	\$138

Traits Observed: GL,CE,BWT,200WT,400WT,SC, Scan(EMA,Rib,Rump,IMF),Genomics

Notes: We think highly of this young Full Power son. Out of a J5 first calver we used him to join heifers. Great EMA and IMF, positive fat and very high indexing across the board.

Purchaser:..... \$:.....

**Lot 6**

**KELLY ANGUS FULL POWER P207<sup>SV</sup>**

**GXNP207**

DOB: 30/07/2018 Registration Status: HBR

Genetic Status: AMFU,CAFU,DDF,NHFU

G A R PREDESTINED#

TUWHARETOA REGENT D145<sup>PV</sup>

PA POWER TOOL 9108<sup>SV</sup>

TOPBOS AMBASSADOR F4<sup>PV</sup>

SHAMROCKS BEEBEE QUEEN 3095#

TUWHARETOA C115<sup>SV</sup>

Sire: USA16981588 PA FULL POWER 1208<sup>PV</sup>

Dam: VLYJ1258 LAWSONS AMBASSADOR J1258#

G A R NEW DESIGN 5050#

LAWSONS TANK B1155<sup>PV</sup>

PINE VIEW SQR RITA W091#

LAWSONS TANK B1155 G229#

PINE VIEW RITA R084#

LAWSONS DINKY DI E162#

**February 2020 TransTasman Angus Cattle Evaluation**

TACE	Dir	Dtrs	GL	BW	200 W	400 W	600 W	MCW	Milk
EBV	+1.1	-3.8	-5.3	+5.0	+62	+103	+137	+110	+18
ACC	62%	53%	86%	75%	71%	71%	71%	70%	65%

SS	D t C	CWT	EMA	Rib	Rump	RBV	IMF	NFI-F	Doc
+2.5	-4.3	+85	+13.3	-2.1	-2.4	+2.0	+2.9	+0.21	-
74%	44%	66%	64%	68%	65%	65%	64%	54%	-

**Selection Indexes**

ABI	DOM	HGN	HGS
\$154	\$134	\$175	\$144

Traits Observed: GL,BWT,200WT,400WT,SC, Scan(EMA,Rib,Rump,IMF),Genomics

Notes: A Full Power son that would be suited to cows. This bull is pure growth and carcass, he will breed some lovely types of females. Top 5% for all \$ indexes

Purchaser:..... \$:.....

## Lot 7

## KELLY ANGUS KODAK P282<sup>SV</sup>

## GXNP282

DOB: 23/08/2018 Registration Status: HBR

Genetic Status: AMC, CAFU, DDFU, NHFU

BOOROOMOOKA UNDERTAKEN Y145<sup>PV</sup>

BON VIEW NEW DESIGN 208<sup>SV</sup>

RENNYLEA EDMUND E11<sup>PV</sup>

TC TOTAL 410<sup>#</sup>

LAWSONS HENRY VIII Y5<sup>SV</sup>

TC ERICA EILEEN 2047<sup>#</sup>

Sire: NORK522 RENNYLEA KODAK K522<sup>SV</sup>

Dam: VLYE242 LAWSONS TOTAL E242<sup>SV</sup>

TE MANIA BERKLEY B1<sup>PV</sup>

G A R PREDESTINED<sup>#</sup>

RENNYLEA EISA ERICA F810<sup>#</sup>

LAWSONS PREDESTINED B562<sup>#</sup>

RENNYLEA EISA ERICA C299<sup>PV</sup>

LAWSONS PARAMOUNT X643<sup>#</sup>

### February 2020 TransTasman Angus Cattle Evaluation

### Selection Indexes

TACE	Dir	Dtrs	GL	BW	200 W	400 W	600 W	MCW	Milk
EBV	+3.2	-1.2	+0.5	+2.8	+53	+105	+132	+125	+19
ACC	59%	52%	86%	75%	70%	71%	70%	66%	60%

ABI	DOM	HGN	HGS
\$144	\$128	\$166	\$133

SS	D t C	CWT	EMA	Rib	Rump	RBV	IMF	NFI-F	Doc
+4.7	-6.1	+74	+6.7	+0.2	-1.3	+0.3	+2.9	+0.52	-
73%	44%	66%	64%	68%	66%	66%	64%	57%	-

Traits Observed: GL, BWT, 200WT, 400WT, SC, Scan(EMA, Rib, Rump, IMF), Genomics

Notes: This Kodak son is in the top 5% for 400d growth. He has a very even spread of EBVs and will perform well in various herds.

Purchaser: ..... \$: .....

## Lot 8

## KELLY ANGUS KODAK P210<sup>PV</sup>

## GXNP210



DOB: 2/08/2018 Registration Status: HBR

Genetic Status: AMFU, CAFU, DDF, NHFU

BOOROOMOOKA UNDERTAKEN Y145<sup>PV</sup>

TUWHARETOA REGENT D145<sup>PV</sup>

RENNYLEA EDMUND E11<sup>PV</sup>

TOPBOS AMBASSADOR F4<sup>PV</sup>

LAWSONS HENRY VIII Y5<sup>SV</sup>

TUWHARETOA C115<sup>SV</sup>

Sire: NORK522 RENNYLEA KODAK K522<sup>SV</sup>

Dam: VLYJ1246 LAWSONS AMBASSADOR J1246<sup>SV</sup>

TE MANIA BERKLEY B1<sup>PV</sup>

G A R PROGRESS<sup>SV</sup>

RENNYLEA EISA ERICA F810<sup>#</sup>

LAWSONS PROGRESS G363<sup>#</sup>

RENNYLEA EISA ERICA C299<sup>PV</sup>

LAWSONS TANK E542<sup>PV</sup>

### February 2020 TransTasman Angus Cattle Evaluation

### Selection Indexes

TACE	Dir	Dtrs	GL	BW	200 W	400 W	600 W	MCW	Milk
EBV	+11.7	+5.6	-2.5	-1.8	+38	+80	+104	+88	+24
ACC	59%	52%	72%	75%	70%	71%	70%	67%	59%

ABI	DOM	HGN	HGS
\$140	\$121	\$176	\$123

SS	D t C	CWT	EMA	Rib	Rump	RBV	IMF	NFI-F	Doc
+4.1	-5.1	+63	+5.3	+0.7	-1.6	-0.3	+5.0	+0.54	-
73%	44%	66%	65%	69%	66%	67%	64%	58%	-

Traits Observed: BWT, 200WT, 400WT, SC, Scan(EMA, Rib, Rump, IMF), Genomics

Notes: A true heifer bull with unmatched BW at -1.7 puts him in the top 1%. He is moderate on size but yet packs a punch with 5 for IMF which puts him at the top of the breed. Has a notable carcass pedigree, his progeny will be sought after. Used in herd, semen collected.

Purchaser: ..... \$: .....

## Lot 9

## KELLY ANGUS KODAK P268<sup>SV</sup>

## GXNP268



DOB: 14/07/2018 Registration Status: HBR

Genetic Status: AMFU, CAFU, DDF, NHFU

BOOROOMOOKA UNDERTAKEN Y145<sup>PV</sup>

CONNELLY IN SURE 8524<sup>#</sup>

RENNYLEA EDMUND E11<sup>PV</sup>

G A R SURE FIRE<sup>SV</sup>

LAWSONS HENRY VIII Y5<sup>SV</sup>

CHAIR ROCK 5050 G A R 8086<sup>#</sup>

Sire: NORK522 RENNYLEA KODAK K522<sup>SV</sup>

Dam: VLYL1333 LAWSONS SURE FIRE L1333<sup>#</sup>

TE MANIA BERKLEY B1<sup>PV</sup>

AYRVALE BARTEL E7<sup>PV</sup>

RENNYLEA EISA ERICA F810<sup>#</sup>

LAWSONS BARTEL E7 J1316<sup>#</sup>

RENNYLEA EISA ERICA C299<sup>PV</sup>

LAWSONS HENRY VIII G8143<sup>#</sup>

### February 2020 TransTasman Angus Cattle Evaluation

### Selection Indexes

TACE	Dir	Dtrs	GL	BW	200 W	400 W	600 W	MCW	Milk
EBV	+9.9	+7.4	-3.1	+1.4	+52	+91	+120	+108	+19
ACC	56%	49%	70%	69%	68%	68%	68%	63%	55%

ABI	DOM	HGN	HGS
\$155	\$132	\$175	\$143

SS	D t C	CWT	EMA	Rib	Rump	RBV	IMF	NFI-F	Doc
+3.5	-9.7	+68	+7.4	+0.5	+0.0	+0.6	+2.7	+0.50	-
64%	41%	64%	63%	67%	64%	65%	62%	57%	-

Traits Observed: BWT, 200WT, 400WT, SC, Scan(EMA, Rib, Rump, IMF), Genomics

Notes: A Kodak son that is top 5% of the breed for all Indexes. A high marbling, calving ease bull that we used in herd.

Purchaser: ..... \$: .....



LOT 1  
KELLY ANGUS INTENSITY P163



LOT 2  
KELLY ANGUS INTENSITY P170



LOT 3  
KELLY ANGUS FULL POWER P258



LOT 4  
KELLY ANGUS FULL POWER P192



LOT 8  
KELLY ANGUS KODAK P210



LOT 9  
KELLY ANGUS KODAK P268



**LOT 10**  
KELLY ANGUS VISIONARY P248



**LOT 11**  
KELLY ANGUS VISIONARY P206



**LOT 13**  
KELLY ANGUS KATAPULT P161



**LOT 15**  
KELLY ANGUS KATAPULT P217



**LOT 19**  
KELLY ANGUS HERCULES P175



**LOT 20**  
KELLY ANGUS HERCULES P181



LOT 21  
KELLY ANGUS HERCULES P176



LOT 22  
KELLY ANGUS HERCULES P174



LOT 26  
KELLY ANGUS GET CRACKING P297



LOT 28  
KELLY ANGUS GET CRACKING P292



LOT 29  
KELLY ANGUS GET CRACKING P289



LOT 30  
KELLY ANGUS VISIONARY P263



**LOT 31**  
KELLY ANGUS VISIONARY P273



**LOT 33**  
KELLY ANGUS VISIONARY P249



**LOT 37**  
KKELLY ANGUS KODAK P165



**LOT 41**  
KELLY ANGUS K2 P235



**LOT 44**  
KELLY ANGUS KATAPULT P218



**LOT 45**  
KELLY ANGUS KATAPULT P276



**Lot 10** **KELLY ANGUS VISIONARY P248<sup>SV</sup>** **GXNP248**

DOB: 19/08/2018 Registration Status:HBR Genetic Status: AMFU,CAFU,DDF,NHFU

S A F CONNECTION# S A R SOLUTION<sup>SV</sup>

SYDGEN C C & 7# SYDGEN FOREVER LADY 4087# LAWSONS INVINCIBLE C402<sup>PV</sup>

Sire: USA16972676 T C A VISIONARY 158<sup>SV</sup> Dam: VLYG8099 LAWSONS INVINCIBLE G8099#

S A V 5175 BANDO 4597# LAWSONS HIGH GRADE Z440<sup>PV</sup>

T C A TREASURE 0699 601# SWEETWATER TREASURE 73M# LAWSONS HIGH GRADE C8409#

LAWSONS HENRY VIII Y1656#

**February 2020 TransTasman Angus Cattle Evaluation**

TACE	Dir	Dtrs	GL	BW	200 W	400 W	600 W	MCW	Milk
EBV	+8.2	-1.6	-2.6	+2.8	+46	+80	+106	+91	+9
ACC	59%	50%	85%	70%	69%	70%	68%	66%	62%

SS	D t C	CWT	EMA	Rib	Rump	RBY	IMF	NFI-F	Doc
+2.1	-5.3	+60	+8.6	+1.0	+1.7	+0.8	+1.5	+0.77	-
73%	41%	63%	62%	65%	63%	62%	61%	50%	-

**Selection Indexes**

ABI	DOM	HGN	HGS
\$124	\$115	\$124	\$123

Traits Observed: GL,200WT,400WT,SC, Scan(EMA,Rib,Rump,IMF),Genomics

Notes: A Visionary son with a low birthweight of 2.8, positive fats and a great EMA, very easy doing and eye-catching looks.

Purchaser:..... \$:.....

**Lot 11** **KELLY ANGUS VISIONARY P206<sup>SV</sup>** **GXNP206**



DOB: 30/07/2018 Registration Status:HBR Genetic Status: AMFU,CAFU,DDF,NHFU

S A F CONNECTION# LAWSONS TANK B1155<sup>PV</sup>

SYDGEN C C & 7# SYDGEN FOREVER LADY 4087# LAWSONS GENERAL G1730<sup>SV</sup>

Sire: USA16972676 T C A VISIONARY 158<sup>SV</sup> Dam: VLYJ1326 LAWSONS GENERAL J1326#

S A V 5175 BANDO 4597# LAWSONS INVINCIBLE C402<sup>PV</sup>

T C A TREASURE 0699 601# SWEETWATER TREASURE 73M# LAWSONS INVINCIBLE G8144#

LAWSONS FAIR DINKUM C8193#

**February 2020 TransTasman Angus Cattle Evaluation**

TACE	Dir	Dtrs	GL	BW	200 W	400 W	600 W	MCW	Milk
EBV	+5.5	-0.1	-4.8	+2.9	+50	+87	+112	+86	+19
ACC	58%	49%	85%	74%	69%	70%	68%	64%	61%

SS	D t C	CWT	EMA	Rib	Rump	RBY	IMF	NFI-F	Doc
+2.7	-6.1	+67	+10.2	-1.5	-2.7	+2.3	+2.3	+0.56	-
73%	39%	63%	61%	65%	62%	61%	61%	51%	-

**Selection Indexes**

ABI	DOM	HGN	HGS
\$140	\$129	\$155	\$132

Traits Observed: GL,BWT,200WT,400WT,SC, Scan(EMA,Rib,Rump,IMF),Genomics

Notes: This Visionary son is a very soft, easy doing bull with a low BW followed by outstanding EMA at 10.2.

Purchaser:..... \$:.....

**Lot 12** **KELLY ANGUS VISIONARY P277<sup>SV</sup>** **GXNP277**

DOB: 21/08/2018 Registration Status:HBR Genetic Status: AMFU,CAFU,DDF,NHFU

S A F CONNECTION# AYRVALE BARTEL E7<sup>PV</sup>

SYDGEN C C & 7# SYDGEN FOREVER LADY 4087# LAWSONS INCREDIBLE H803<sup>PV</sup>

Sire: USA16972676 T C A VISIONARY 158<sup>SV</sup> Dam: GXNM31 KELLY ANGUS INCREDIBLE M31#

S A V 5175 BANDO 4597# TOPBOS AMBASSADOR F4<sup>PV</sup>

T C A TREASURE 0699 601# SWEETWATER TREASURE 73M# LAWSONS AMBASSADOR J1176#

LAWSONS SELECTIVE D1318<sup>SV</sup>

**February 2020 TransTasman Angus Cattle Evaluation**

TACE	Dir	Dtrs	GL	BW	200 W	400 W	600 W	MCW	Milk
EBV	+4.9	-4.5	+1.1	+4.1	+47	+79	+97	+55	+14
ACC	59%	49%	85%	74%	68%	68%	67%	64%	60%

SS	D t C	CWT	EMA	Rib	Rump	RBY	IMF	NFI-F	Doc
+1.2	-5.6	+58	+14.5	-1.0	-1.4	+2.2	+2.6	+0.62	-
71%	39%	62%	61%	64%	61%	61%	60%	49%	-

**Selection Indexes**

ABI	DOM	HGN	HGS
\$137	\$129	\$149	\$130

Traits Observed: GL,CE,BWT,200WT,400WT,SC, Scan(EMA,Rib,Rump,IMF),Genomics

Notes: Another Visionary with a massive EMA at 14.5, this puts him in the top 1% of the breed with adequate marbling he has ample softness but is a real meat machine.

Purchaser:..... \$:.....

## Lot 13

## KELLY ANGUS KATAPULT P161<sup>SV</sup>

GXNP161



DOB: 13/07/2018

Registration Status:HBR

Genetic Status: AMFU,CAFU,DDF,NHFU

S A V FINAL ANSWER 0035<sup>#</sup>

AYRVALE BARTEL E7<sup>PV</sup>

S A V THUNDERBIRD 9061<sup>SV</sup>

AYRVALE HERCULES H9<sup>PV</sup>

S A V EMBLYNETTE 7411<sup>#</sup>

LAWSONS INVINCIBLE F338<sup>SV</sup>

Sire: CXBK1 PRIME KATAPULT K1<sup>SV</sup>

Dam: GXNM83 KELLY ANGUS HERCULES M83<sup>#</sup>

TE MANIA EMPEROR E343<sup>PV</sup>

LAWSONS INVINCIBLE C402<sup>PV</sup>

PRIME JEDDA H81<sup>#</sup>

LAWSONS PREDESTINED B395 G82 G8201<sup>SV</sup>

PRIME JEDDA E36<sup>#</sup>

LAWSONS TANK D8105<sup>#</sup>

### February 2020 TransTasman Angus Cattle Evaluation

TACE	Dir	Dtrs	GL	BW	200 W	400 W	600 W	MCW	Milk
EBV	+11.5	+3.2	-10.5	-0.1	+45	+78	+97	+67	+15
ACC	56%	48%	85%	74%	68%	69%	68%	64%	57%

SS	D t C	CWT	EMA	Rib	Rump	RBV	IMF	NFI-F	Doc
+2.7	-5.4	+56	+7.0	+1.0	-0.2	+1.0	+1.9	+0.50	-
72%	39%	60%	59%	64%	61%	60%	59%	49%	-

### Selection Indexes

ABI	DOM	HGN	HGS
\$120	\$118	\$121	\$118

Traits Observed: GL,CE,BWT,200WT,400WT,SC, Scan(EMA,Rib,Rump,IMF),Genomics

Notes: P161 leads off the Katapult sons. A heifers first calf, he is Top 1% for GL, and BW. A well muscled calving ease bull.

Purchaser:..... \$:.....

## Lot 14

## KELLY ANGUS KATAPULT P224<sup>SV</sup>

GXNP224

DOB: 13/08/2018

Registration Status:HBR

Genetic Status: AMFU,CAFU,DDFU,NHC

S A V FINAL ANSWER 0035<sup>#</sup>

TE MANIA BARTEL B219<sup>PV</sup>

S A V THUNDERBIRD 9061<sup>SV</sup>

AYRVALE BARTEL E7<sup>PV</sup>

S A V EMBLYNETTE 7411<sup>#</sup>

EAGLEHAWK JEDDA B32<sup>SV</sup>

Sire: CXBK1 PRIME KATAPULT K1<sup>SV</sup>

Dam: VLYH8046 LAWSONS BARTEL E7 H8046<sup>#</sup>

TE MANIA EMPEROR E343<sup>PV</sup>

G A R PINNACLE<sup>#</sup>

PRIME JEDDA H81<sup>#</sup>

LAWSONS PINNACLE Y1813<sup>#</sup>

PRIME JEDDA E36<sup>#</sup>

YTHANBRAE BINGO U362<sup>#</sup>

### February 2020 TransTasman Angus Cattle Evaluation

TACE	Dir	Dtrs	GL	BW	200 W	400 W	600 W	MCW	Milk
EBV	+2.9	+5.0	-8.1	+4.4	+58	+107	+140	+124	+18
ACC	58%	50%	85%	74%	68%	69%	67%	65%	58%

SS	D t C	CWT	EMA	Rib	Rump	RBV	IMF	NFI-F	Doc
+3.1	-6.6	+81	+6.3	-0.2	-1.1	+1.5	+0.8	+0.15	-
72%	41%	61%	59%	64%	61%	60%	59%	50%	-

### Selection Indexes

ABI	DOM	HGN	HGS
\$143	\$130	\$148	\$140

Traits Observed: GL,BWT,200WT,400WT,SC, Scan(EMA,Rib,Rump,IMF),Genomics

Notes: This bull represents great growth and good carcass weight that puts him in the top 10% of the breed for ABI.

Purchaser:..... \$:.....

## Lot 15

## KELLY ANGUS KATAPULT P217<sup>SV</sup>

GXNP217



DOB: 6/08/2018

Registration Status:HBR

Genetic Status: AMFU,CAFU,DDF,NHFU

S A V FINAL ANSWER 0035<sup>#</sup>

TUWHARETOA REGENT D145<sup>PV</sup>

S A V THUNDERBIRD 9061<sup>SV</sup>

PARINGA JUDD J5<sup>PV</sup>

S A V EMBLYNETTE 7411<sup>#</sup>

STRATHEWEN BERKLEY WILPEN A F30<sup>PV</sup>

Sire: CXBK1 PRIME KATAPULT K1<sup>SV</sup>

Dam: GXNM69 KELLY ANGUS JUDD M69<sup>#</sup>

TE MANIA EMPEROR E343<sup>PV</sup>

B/R NEW DAY 454<sup>#</sup>

PRIME JEDDA H81<sup>#</sup>

LAWSONS NEW DAY G304<sup>#</sup>

PRIME JEDDA E36<sup>#</sup>

LAWSONS TANK E468<sup>#</sup>

### February 2020 TransTasman Angus Cattle Evaluation

TACE	Dir	Dtrs	GL	BW	200 W	400 W	600 W	MCW	Milk
EBV	+7.8	+1.5	-9.5	+3.6	+61	+109	+145	+137	+18
ACC	56%	47%	85%	74%	68%	69%	67%	63%	56%

SS	D t C	CWT	EMA	Rib	Rump	RBV	IMF	NFI-F	Doc
+2.2	-3.2	+81	+8.6	-1.7	-4.2	+2.7	+1.8	-0.28	-
72%	38%	59%	58%	62%	60%	59%	58%	47%	-

### Selection Indexes

ABI	DOM	HGN	HGS
\$149	\$135	\$166	\$142

Traits Observed: GL,CE,BWT,200WT,400WT,SC, Scan(EMA,Rib,Rump,IMF),Genomics

Notes: This Katapult son is in the top 5% for eight traits and the top 1% for RBV. He is a soft, easy doing bull that will breed outstanding progeny.

Purchaser:..... \$:.....

**Lot 16**

**KELLY ANGUS KATAPULT P242<sup>SV</sup>**

**GXNP242**



DOB: **16/08/2018** Registration Status:**HBR**

Genetic Status: **AMFU,CAFU,DDF,NHF**

S A V FINAL ANSWER 0035<sup>#</sup>

AYRVALE BARTEL E7<sup>PV</sup>

S A V THUNDERBIRD 9061<sup>SV</sup>

LAWSONS BARTEL E7 H811<sup>SV</sup>

S A V EMBLYNETTE 7411<sup>#</sup>

LAWSONS TANK E571<sup>#</sup>

Sire: CXBK1 PRIME KATAPULT K1<sup>SV</sup>

Dam: VLYK1390 LAWSONS BARTEL E7 H811 K1390<sup>#</sup>

TE MANIA EMPEROR E343<sup>PV</sup>

B/R AMBUSH 28<sup>#</sup>

PRIME JEDDA H81<sup>#</sup>

LAWSONS AMBUSH E381<sup>#</sup>

PRIME JEDDA E36<sup>#</sup>

LAWSONS GAR TANK B1194<sup>#</sup>

**February 2020 TransTasman Angus Cattle Evaluation**

TACE	Dir	Dtrs	GL	BW	200 W	400 W	600 W	MCW	Milk
<b>EBV</b>	<b>+6.2</b>	<b>+4.9</b>	<b>-7.9</b>	<b>+3.1</b>	<b>+47</b>	<b>+86</b>	<b>+104</b>	<b>+81</b>	<b>+11</b>
ACC	54%	45%	84%	73%	67%	68%	65%	63%	55%

SS	D t C	CWT	EMA	Rib	Rump	RBV	IMF	NFI-F	Doc
<b>+1.3</b>	<b>-4.7</b>	<b>+56</b>	<b>+8.3</b>	<b>-0.4</b>	<b>-1.8</b>	<b>+1.1</b>	<b>+2.6</b>	<b>+0.25</b>	-
71%	37%	58%	57%	61%	59%	58%	56%	45%	-

**Selection Indexes**

ABI	DOM	HGN	HGS
\$131	\$126	\$144	\$124

*Traits Observed:* GL,BWT,200WT,400WT,SC, Scan(EMA,Rib,Rump,IMF),Genomics

Notes: A free moving Katapult son that has a positive calving ease and moderate birth.

Purchaser:..... \$:.....

**Lot 17**

**KELLY ANGUS GLOBAL P237<sup>SV</sup>**

**GXNP237**



DOB: **15/08/2018** Registration Status:**HBR**

Genetic Status: **AMFU,CAFU,DDF,NHFU**

BON VIEW NEW DESIGN 1407<sup>#</sup>

TE MANIA BARTEL B219<sup>PV</sup>

SITZ NEW DESIGN 458N<sup>#</sup>

AYRVALE BARTEL E7<sup>PV</sup>

SITZ ELLUNAS ELITE 3308<sup>#</sup>

EAGLEHAWK JEDDA B32<sup>SV</sup>

Sire: DXTG563 TEXAS GLOBAL G563<sup>PV</sup>

Dam: VLYJ1127 LAWSONS BARTEL E7 J1127<sup>#</sup>

B T ULTRAVOX 297E<sup>#</sup>

LAWSONS DINKY-DI Z191<sup>SV</sup>

TEXAS UNDINE Z036<sup>SV</sup>

LAWSONS DINKY DI E739<sup>#</sup>

TEXAS UNDINE W63<sup>#</sup>

LAWSONS PONO V346 B1461<sup>#</sup>

**February 2020 TransTasman Angus Cattle Evaluation**

TACE	Dir	Dtrs	GL	BW	200 W	400 W	600 W	MCW	Milk
<b>EBV</b>	<b>+8.2</b>	<b>+5.5</b>	<b>-3.3</b>	<b>+3.3</b>	<b>+55</b>	<b>+102</b>	<b>+131</b>	<b>+103</b>	<b>+21</b>
ACC	58%	52%	85%	74%	69%	70%	68%	67%	62%

SS	D t C	CWT	EMA	Rib	Rump	RBV	IMF	NFI-F	Doc
<b>+4.4</b>	<b>-5.8</b>	<b>+80</b>	<b>+10.6</b>	<b>-1.3</b>	<b>-2.0</b>	<b>+2.5</b>	<b>+2.0</b>	<b>+0.27</b>	-
73%	45%	64%	62%	65%	63%	63%	62%	52%	-

**Selection Indexes**

ABI	DOM	HGN	HGS
\$158	\$142	\$174	\$149

*Traits Observed:* GL,BWT,200WT,400WT,SC, Scan(EMA,Rib,Rump,IMF),Genomics

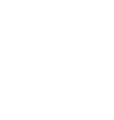
Notes: This bull has fantastic calving ease backed up by massive growth and a carcass that will not disappoint. He is in the top 5% of the breed.

Purchaser:..... \$:.....

**Lot 18**

**KELLY ANGUS GLOBAL P259<sup>SV</sup>**

**GXNP259**



DOB: **20/08/2018** Registration Status:**HBR**

Genetic Status: **AMFU,CAFU,DDF,NHFU**

BON VIEW NEW DESIGN 1407<sup>#</sup>

AYRVALE BARTEL E7<sup>PV</sup>

SITZ NEW DESIGN 458N<sup>#</sup>

LAWSONS INCREDIBLE H803<sup>PV</sup>

SITZ ELLUNAS ELITE 3308<sup>#</sup>

LAWSONS DINKY DI E447<sup>PV</sup>

Sire: DXTG563 TEXAS GLOBAL G563<sup>PV</sup>

Dam: VLYL1146 LAWSONS INCREDIBLE L1146<sup>#</sup>

B T ULTRAVOX 297E<sup>#</sup>

LAWSONS INVINCIBLE C402<sup>PV</sup>

TEXAS UNDINE Z036<sup>SV</sup>

LAWSONS INVINCIBLE H8122<sup>#</sup>

TEXAS UNDINE W63<sup>#</sup>

LAWSONS EQUATOR E8374<sup>#</sup>

**February 2020 TransTasman Angus Cattle Evaluation**

TACE	Dir	Dtrs	GL	BW	200 W	400 W	600 W	MCW	Milk
<b>EBV</b>	<b>+0.6</b>	<b>-6.1</b>	<b>-3.4</b>	<b>+5.1</b>	<b>+58</b>	<b>+106</b>	<b>+134</b>	<b>+109</b>	<b>+21</b>
ACC	57%	50%	85%	74%	69%	69%	68%	67%	60%

SS	D t C	CWT	EMA	Rib	Rump	RBV	IMF	NFI-F	Doc
<b>+4.2</b>	<b>-5.7</b>	<b>+67</b>	<b>+6.9</b>	<b>+0.0</b>	<b>+1.6</b>	<b>+1.4</b>	<b>+1.1</b>	<b>+0.08</b>	-
72%	41%	63%	61%	64%	62%	60%	60%	49%	-

**Selection Indexes**

ABI	DOM	HGN	HGS
\$136	\$127	\$137	\$135

*Traits Observed:* GL,BWT,200WT,400WT,SC, Scan(EMA,Rib,Rump,IMF),Genomics

Notes: This Texas Global son will certainly give you ample amount of growth, he carries a lot of depth and power.

Purchaser:..... \$:.....

## Lot 19 KELLY ANGUS HERCULES P175<sup>SV</sup> GXNP175

DOB: 23/07/2018 Registration Status: APR Genetic Status: AMF,CAFU,DDF,NHFU

TE MANIA BARTEL B219<sup>PV</sup> AYRVALE BARTEL E7<sup>PV</sup> EAGLEHAWK JEDDA B32<sup>SV</sup> Sire: HIOH9 AYRVALE HERCULES H9<sup>PV</sup> LAWSONS INVINCIBLE C402<sup>PV</sup> LAWSONS INVINCIBLE F338<sup>SV</sup> LAWSONS TOTAL D1152<sup>#</sup>

LAWSONS INCREDIBLE H803<sup>PV</sup> LAWSONS DINKY DI E447<sup>PV</sup> Dam: GXNM59 KELLY ANGUS INCREDIBLE M59<sup>#</sup> DUNOON EVIDENT E614<sup>PV</sup> LAWSONS EVIDENT H8066<sup>#</sup> LAWSONS NEW BALL GAME D8073<sup>#</sup>

### February 2020 TransTasman Angus Cattle Evaluation

TACE	Dir	Dtrs	GL	BW	200 W	400 W	600 W	MCW	Milk
EBV	-1.5	+4.1	-3.9	+4.6	+55	+99	+133	+115	+22
ACC	61%	54%	86%	76%	70%	72%	71%	68%	64%

SS	D t C	CWT	EMA	Rib	Rump	RBV	IMF	NFI-F	Doc
+1.6	-4.3	+88	+12.6	-2.5	-3.7	+2.4	+2.1	+0.27	-
75%	44%	65%	64%	68%	65%	64%	64%	54%	-

### Selection Indexes

ABI	DOM	HGN	HGS
\$143	\$127	\$159	\$135

Traits Observed: GL,CE,BWT,200WT,400WT,SC, Scan(EMA,Rib,Rump,IMF),Genomics

Notes: This H9 son boasts fantastic growth through to being in the top 1% for carcase weight at 88, then followed by a massive EMA at 12.5 which also is the top 1% backed up by a top 5% for IMF. A very stylish bull.

Purchaser: ..... \$: .....

## Lot 20 KELLY ANGUS HERCULES P181<sup>SV</sup> GXNP181

DOB: 17/07/2018 Registration Status: APR Genetic Status: AMFU,CAFU,DDF,NHFU

TE MANIA BARTEL B219<sup>PV</sup> AYRVALE BARTEL E7<sup>PV</sup> EAGLEHAWK JEDDA B32<sup>SV</sup> Sire: HIOH9 AYRVALE HERCULES H9<sup>PV</sup> LAWSONS INVINCIBLE C402<sup>PV</sup> LAWSONS INVINCIBLE F338<sup>SV</sup> LAWSONS TOTAL D1152<sup>#</sup>

LAWSONS BRTEL E7 J1506<sup>SV</sup> LAWSONS SCHWARZENEGGER C162<sup>#</sup> Dam: VLYL1154 LAWSONS BARTEL E7 J1506 L115 L1154<sup>#</sup> AYRVALE BARTEL E7<sup>PV</sup> LAWSONS BARTEL E7 H8129<sup>#</sup> LAWSONS KING ISLAND BEEF D81 D8102<sup>#</sup>

### February 2020 TransTasman Angus Cattle Evaluation

TACE	Dir	Dtrs	GL	BW	200 W	400 W	600 W	MCW	Milk
EBV	+7.2	+7.3	-7.7	+3.1	+44	+78	+93	+58	+20
ACC	61%	55%	86%	76%	72%	71%	72%	71%	66%

SS	D t C	CWT	EMA	Rib	Rump	RBV	IMF	NFI-F	Doc
-0.7	-7.2	+64	+7.1	+0.2	+0.5	+0.2	+2.3	+0.03	-
74%	45%	67%	65%	70%	67%	67%	65%	57%	-

### Selection Indexes

ABI	DOM	HGN	HGS
\$125	\$120	\$129	\$120

Traits Observed: GL,BWT,200WT,400WT,SC, Scan(EMA,Rib,Rump,IMF),Genomics

Notes: A H9 son with a tremendous length of body, his positive calving ease, moderate BW and short GL combine to make him a great choice for calving ease.

Purchaser: ..... \$: .....

## Lot 21 KELLY ANGUS HERCULES P176<sup>SV</sup> GXNP176

DOB: 24/07/2018 Registration Status: APR Genetic Status: AMFU,CAFU,DDFU,NHFU

TE MANIA BARTEL B219<sup>PV</sup> AYRVALE BARTEL E7<sup>PV</sup> EAGLEHAWK JEDDA B32<sup>SV</sup> Sire: HIOH9 AYRVALE HERCULES H9<sup>PV</sup> LAWSONS INVINCIBLE C402<sup>PV</sup> LAWSONS INVINCIBLE F338<sup>SV</sup> LAWSONS TOTAL D1152<sup>#</sup>

C R A BEXTOR 872 5205 608<sup>#</sup> G A R PROPHET<sup>SV</sup> G A R OBJECTIVE 1885<sup>#</sup> Dam: GXNM6 KELLY ANGUS PROPHET M6<sup>#</sup> AYRVALE BARTEL E7<sup>PV</sup> LAWSONS BARTEL E7 J1196<sup>#</sup> LAWSONS TANK F864<sup>#</sup>

### February 2020 TransTasman Angus Cattle Evaluation

TACE	Dir	Dtrs	GL	BW	200 W	400 W	600 W	MCW	Milk
EBV	+2.4	+2.8	-4.0	+3.5	+55	+88	+114	+75	+26
ACC	62%	56%	86%	75%	71%	71%	72%	69%	65%

SS	D t C	CWT	EMA	Rib	Rump	RBV	IMF	NFI-F	Doc
+0.6	-5.3	+73	+7.0	-2.0	-2.4	+0.6	+3.4	+0.13	-
74%	45%	66%	65%	69%	67%	66%	65%	56%	-

### Selection Indexes

ABI	DOM	HGN	HGS
\$132	\$121	\$150	\$124

Traits Observed: GL,CE,BWT,200WT,400WT,SC, Scan(EMA,Rib,Rump,IMF),Genomics

Notes: A bull that has unbelievable milk traits with plenty of eye appeal.

Purchaser: ..... \$: .....

**Lot 22**

**KELLY ANGUS HERCULES P174<sup>SV</sup>**

**GXNP174**

DOB: **21/07/2018** Registration Status: **APR**

Genetic Status: **AMFU,CAFU,DDF,NHFU**

TE MANIA BARTEL B219<sup>PV</sup>

CONNEALY FORWARD<sup>#</sup>

AYRVALE BARTEL E7<sup>PV</sup>

STERITA PARK BLACK JACK J231<sup>PV</sup>

EAGLEHAWK JEDDA B32<sup>SV</sup>

SYDGEN FOREVER LADY 4413<sup>#</sup>

Sire: HIOH9 AYRVALE HERCULES H9<sup>PV</sup>

Dam: GXNM98 KELLY ANGUS BLACK JACK M98<sup>#</sup>

LAWSONS INVINCIBLE C402<sup>PV</sup>

G A R NEW DESIGN 5050<sup>#</sup>

LAWSONS INVINCIBLE F338<sup>SV</sup>

LAWSONS E627<sup>PV</sup>

LAWSONS TOTAL D1152<sup>#</sup>

LAWSONS TANK B426<sup>SV</sup>

**February 2020 TransTasman Angus Cattle Evaluation**

**Selection Indexes**

TACE	Dir	Dtrs	GL	BW	200 W	400 W	600 W	MCW	Milk
<b>EBV</b>	<b>+0.1</b>	<b>+5.0</b>	<b>-5.9</b>	<b>+4.4</b>	<b>+62</b>	<b>+112</b>	<b>+148</b>	<b>+116</b>	<b>+23</b>
ACC	61%	53%	85%	74%	69%	70%	70%	67%	62%

ABI	DOM	HGN	HGS
\$158	\$136	\$176	\$149

SS	D t C	CWT	EMA	Rib	Rump	RBV	IMF	NFI-F	Doc
<b>+1.9</b>	<b>-5.7</b>	<b>+9.0</b>	<b>+9.0</b>	<b>-1.8</b>	<b>-1.5</b>	<b>+1.1</b>	<b>+2.4</b>	<b>-0.05</b>	-
73%	41%	63%	62%	66%	64%	62%	62%	51%	-

**Traits Observed:** GL,CE,BWT,200WT,400WT,SC, Scan(EMA,Rib,Rump,IMF),Genomics

Notes: Another outstanding H9 son that boasts amazing growth, his 200, 400 and 600d figures are in the top 5%. He is in the top 1% for carcase weight. An easy doing bull with eye catching looks.

Purchaser:.....\$:.....

**Lot 23**

**KELLY ANGUS HERCULES P256<sup>SV</sup>**

**GXNP256**

DOB: **19/08/2018** Registration Status: **APR**

Genetic Status: **AMFU,CAFU,DDF,NHFU**

TE MANIA BARTEL B219<sup>PV</sup>

G A R SOLUTION<sup>SV</sup>

AYRVALE BARTEL E7<sup>PV</sup>

LAWSONS INVINCIBLE C402<sup>PV</sup>

EAGLEHAWK JEDDA B32<sup>SV</sup>

LAWSONS PREDESTINED A598<sup>#</sup>

Sire: HIOH9 AYRVALE HERCULES H9<sup>PV</sup>

Dam: VLYG309 LAWSONS INVINCIBLE G309<sup>#</sup>

LAWSONS INVINCIBLE C402<sup>PV</sup>

S S OBJECTIVE T510 0T26<sup>#</sup>

LAWSONS INVINCIBLE F338<sup>SV</sup>

LAWSONS OBJECTIVE E121<sup>#</sup>

LAWSONS TOTAL D1152<sup>#</sup>

LAWSONS NEW DESIGN 1407 A1306<sup>#</sup>

**February 2020 TransTasman Angus Cattle Evaluation**

**Selection Indexes**

TACE	Dir	Dtrs	GL	BW	200 W	400 W	600 W	MCW	Milk
<b>EBV</b>	<b>-3.9</b>	<b>+0.8</b>	<b>-4.0</b>	<b>+5.1</b>	<b>+56</b>	<b>+99</b>	<b>+137</b>	<b>+99</b>	<b>+22</b>
ACC	62%	56%	85%	75%	72%	72%	72%	70%	66%

ABI	DOM	HGN	HGS
\$148	\$122	\$185	\$132

SS	D t C	CWT	EMA	Rib	Rump	RBV	IMF	NFI-F	Doc
<b>+1.5</b>	<b>-3.6</b>	<b>+82</b>	<b>+6.4</b>	<b>-2.6</b>	<b>-3.7</b>	<b>+0.4</b>	<b>+4.7</b>	<b>+1.02</b>	-
74%	47%	66%	65%	69%	67%	66%	65%	56%	-

**Traits Observed:** GL,BWT,200WT,400WT,SC, Scan(EMA,Rib,Rump,IMF),Genomics

Notes: A very high marbling H9 son that has a lot of frame and length. He is in the top 5% for ABI.

Purchaser:.....\$:.....

**Lot 24**

**KELLY ANGUS HERCULES P223<sup>SV</sup>**

**GXNP223**

DOB: **5/08/2018** Registration Status: **APR**

Genetic Status: **AMFU,CAFU,DDFU,NHFU**

TE MANIA BARTEL B219<sup>PV</sup>

AYRVALE BARTEL E7<sup>PV</sup>

AYRVALE BARTEL E7<sup>PV</sup>

LAWSONS INCREDIBLE H803<sup>PV</sup>

EAGLEHAWK JEDDA B32<sup>SV</sup>

LAWSONS DINKY DI E447<sup>PV</sup>

Sire: HIOH9 AYRVALE HERCULES H9<sup>PV</sup>

Dam: GXNM17 KELLY ANGUS INCREDIBLE M17<sup>#</sup>

LAWSONS INVINCIBLE C402<sup>PV</sup>

G A R PROPHET<sup>SV</sup>

LAWSONS INVINCIBLE F338<sup>SV</sup>

LAWSONS PROPHET K1561<sup>#</sup>

LAWSONS TOTAL D1152<sup>#</sup>

LAWSONS IRONSTONE E187<sup>#</sup>

**February 2020 TransTasman Angus Cattle Evaluation**

**Selection Indexes**

TACE	Dir	Dtrs	GL	BW	200 W	400 W	600 W	MCW	Milk
<b>EBV</b>	<b>+0.6</b>	<b>+4.3</b>	<b>-6.8</b>	<b>+4.4</b>	<b>+51</b>	<b>+83</b>	<b>+108</b>	<b>+79</b>	<b>+25</b>
ACC	62%	55%	86%	75%	71%	71%	72%	69%	65%

ABI	DOM	HGN	HGS
\$131	\$118	\$139	\$125

SS	D t C	CWT	EMA	Rib	Rump	RBV	IMF	NFI-F	Doc
<b>+1.4</b>	<b>-8.4</b>	<b>+64</b>	<b>+6.8</b>	<b>-0.7</b>	<b>+0.3</b>	<b>+0.9</b>	<b>+2.1</b>	<b>+0.26</b>	-
73%	44%	66%	65%	69%	66%	65%	64%	55%	-

**Traits Observed:** GL,CE,BWT,200WT,400WT,SC, Scan(EMA,Rib,Rump,IMF),Genomics

Notes: A moderate framed H9 son with a good length of body. If your looking to add more milk to your cow herd have a second look at this fellow.

Purchaser:.....\$:.....

## Lot 25 KELLY ANGUS FULL POWER P240<sup>SV</sup> GXNP240

DOB: 16/08/2018 Registration Status: HBR Genetic Status: AMFU, CAFU, DDF, NHFU

G A R PREDESTINED<sup>#</sup> S S OBJECTIVE T510 0T26<sup>#</sup>

PA POWER TOOL 9108<sup>SV</sup> G A R ULTIMATE<sup>#</sup>

SHAMROCKS BEEBEE QUEEN 3095<sup>#</sup> G A R LOAD UP 1314<sup>#</sup>

Sire: USA16981588 PA FULL POWER 1208<sup>PV</sup> Dam: VLYE371 LAWSONS ULTIMATE E371<sup>#</sup>

G A R NEW DESIGN 5050<sup>#</sup> BON VIEW NEW DESIGN 1407<sup>#</sup>

PINE VIEW SQR RITA W091<sup>#</sup> LAWSONS NEW DESIGN 14074 B768<sup>SV</sup>

PINE VIEW RITA R084<sup>#</sup> LAWSONS ROCKN D AMBUSH X54<sup>#</sup>

### February 2020 TransTasman Angus Cattle Evaluation

TACE	Dir	Dtrs	GL	BW	200 W	400 W	600 W	MCW	Milk
EBV	-1.2	+1.4	-2.3	+2.6	+45	+81	+102	+86	+11
ACC	61%	53%	86%	76%	71%	72%	71%	70%	66%

SS	D t C	CWT	EMA	Rib	Rump	RBV	IMF	NFI-F	Doc
+1.8	-8.4	+55	+7.8	+0.0	-0.2	+0.5	+2.9	+0.67	-
74%	44%	65%	64%	68%	65%	65%	64%	53%	-

### Selection Indexes

ABI	DOM	HGN	HGS
\$134	\$119	\$151	\$123

Traits Observed: GL, BWT, 200WT, 400WT, SC, Scan(EMA, Rib, Rump, IMF), Genomics

Notes: A nice Full Power son out of an 11yo cow that is still breeding well. A calving ease bull with added EMA and IMF that we used over heifers.

Purchaser: ..... \$: .....

## Lot 26 KELLY ANGUS GET CRACKING P297<sup>SV</sup> GXNP297

DOB: 12/09/2018 Registration Status: HBR Genetic Status: AMFU, CAFU, DDF, NHFU

TE MANIA YORKSHIRE Y437<sup>PV</sup> PAPA EQUATOR 2928<sup>#</sup>

TE MANIA BERKLEY B1<sup>PV</sup> WILSON DOWNS EQUATOR V191<sup>SV</sup>

TE MANIA LOWAN Z53<sup>#</sup> WILCO QUEENIE S9<sup>#</sup>

Sire: DGJG10 ALLOURA GET CRACKING G10<sup>SV</sup> Dam: VLYE248 LAWSONS EQUATOR E248<sup>#</sup>

C A FUTURE DIRECTION 5321<sup>#</sup> G A R US PREMIUM BEEF<sup>#</sup>

ALLOURA JEDDA Z15<sup>#</sup> LAWSONS PREMIUM BEEF B1630<sup>#</sup>

ALLOURA JEDDA X07<sup>#</sup> LAWSONS NEW DESIGN 1407 Z1382<sup>#</sup>

### February 2020 TransTasman Angus Cattle Evaluation

TACE	Dir	Dtrs	GL	BW	200 W	400 W	600 W	MCW	Milk
EBV	+1.0	+4.5	-4.1	+3.6	+47	+83	+95	+82	+14
ACC	57%	50%	85%	74%	69%	69%	69%	67%	62%

SS	D t C	CWT	EMA	Rib	Rump	RBV	IMF	NFI-F	Doc
-0.4	-8.4	+61	+8.5	+0.8	+0.7	-0.9	+4.4	+0.15	-
64%	44%	65%	62%	67%	64%	63%	62%	57%	-

### Selection Indexes

ABI	DOM	HGN	HGS
\$138	\$124	\$163	\$122

Traits Observed: GL, BWT, 200WT, 400WT, SC, Scan(EMA, Rib, Rump, IMF), Genomics

Notes: A real stylish, well put together bull. He has positive fats combined with Top 1% for IMF and a very high EMA.

Purchaser: ..... \$: .....

## Lot 27 KELLY ANGUS GET CRACKING P306<sup>SV</sup> GXNP306

DOB: 18/09/2018 Registration Status: HBR Genetic Status: AMFU, CAFU, DDF, NHFU

TE MANIA YORKSHIRE Y437<sup>PV</sup> BOYD NEW DAY 8005<sup>#</sup>

TE MANIA BERKLEY B1<sup>PV</sup> B/R NEW DAY 454<sup>#</sup>

TE MANIA LOWAN Z53<sup>#</sup> B/R RUBY 1224<sup>#</sup>

Sire: DGJG10 ALLOURA GET CRACKING G10<sup>SV</sup> Dam: VLYG291 LAWSONS NEW DAY G291<sup>#</sup>

C A FUTURE DIRECTION 5321<sup>#</sup> LAWSONS TANK X1235<sup>#</sup>

ALLOURA JEDDA Z15<sup>#</sup> LAWSONS TANK E616<sup>#</sup>

ALLOURA JEDDA X07<sup>#</sup> LAWSONS NEW LEVEL A1149<sup>PV</sup>

### February 2020 TransTasman Angus Cattle Evaluation

TACE	Dir	Dtrs	GL	BW	200 W	400 W	600 W	MCW	Milk
EBV	+9.9	+4.1	-2.6	+2.1	+46	+81	+96	+72	+18
ACC	57%	51%	69%	73%	69%	69%	69%	67%	61%

SS	D t C	CWT	EMA	Rib	Rump	RBV	IMF	NFI-F	Doc
-0.9	-4.7	+56	+8.2	-2.2	-2.8	+0.8	+3.7	-0.09	-
68%	44%	65%	63%	67%	64%	63%	63%	57%	-

### Selection Indexes

ABI	DOM	HGN	HGS
\$128	\$123	\$149	\$118

Traits Observed: BWT, 200WT(x2), SC, Scan(EMA, Rib, Rump, IMF), Genomics

Notes: The youngest bull in the sale, this deep bodied, structurally correct bull is in the top 2% for the breed for IMF.

Purchaser: ..... \$: .....

**Lot 28**

**KELLY ANGUS GET CRACKING P292<sup>SV</sup>**

**GXNP292**



DOB: 10/09/2018 Registration Status:HBR

Genetic Status: AMFU,CAFU,DDF,NHFU

TE MANIA YORKSHIRE Y437<sup>PV</sup>

BON VIEW NEW DESIGN 1407<sup>#</sup>

TE MANIA BERKLEY B1<sup>PV</sup>

LAWSONS DINKY-DI Z191<sup>SV</sup>

TE MANIA LOWAN Z53<sup>#</sup>

G A R PRECISION 1900<sup>#</sup>

Sire: DGJG10 ALLOURA GET CRACKING G10<sup>SV</sup>

Dam: VLYE282 LAWSONS DINKY DI E282<sup>#</sup>

C A FUTURE DIRECTION 5321<sup>#</sup>

G A R PRIME DESIGN<sup>#</sup>

ALLOURA JEDDA Z15<sup>#</sup>

LAWSONS PREDESTINED B501<sup>#</sup>

ALLOURA JEDDA X07<sup>#</sup>

LAWSONS PAYLOAD X1264<sup>#</sup>

**February 2020 TransTasman Angus Cattle Evaluation**

**Selection Indexes**

TACE	Dir	Dtrs	GL	BW	200 W	400 W	600 W	MCW	Milk
EBV	+9.6	+7.3	-2.9	+2.9	+46	+81	+98	+73	+15
ACC	59%	53%	86%	74%	69%	70%	69%	67%	62%

ABI	DOM	HGN	HGS
\$139	\$126	\$160	\$127

SS	D t C	CWT	EMA	Rib	Rump	RBV	IMF	NFI-F	Doc
+1.5	-7.2	+57	+8.7	-0.1	-0.2	-0.3	+3.8	+0.16	-
73%	47%	66%	64%	68%	65%	64%	64%	59%	-

Traits Observed: GL,BWT,200WT,400WT,SC, Scan(EMA,Rib,Rump,IMF),Genomics

Notes: This G10 son combines carcase and calving ease. Good structure in a moderate package.

Purchaser:.....\$:

**Lot 29**

**KELLY ANGUS GET CRACKING P289<sup>SV</sup>**

**GXNP289**



DOB: 8/09/2018 Registration Status:HBR

Genetic Status: AMFU,CAFU,DDF,NHFU

TE MANIA YORKSHIRE Y437<sup>PV</sup>

S S OBJECTIVE T510 0T26<sup>#</sup>

TE MANIA BERKLEY B1<sup>PV</sup>

G A R SELECTIVE<sup>#</sup>

TE MANIA LOWAN Z53<sup>#</sup>

G A R 1407 NEW DESIGN 803<sup>#</sup>

Sire: DGJG10 ALLOURA GET CRACKING G10<sup>SV</sup>

Dam: VLYE617 LAWSONS SELECTIVE E617<sup>#</sup>

C A FUTURE DIRECTION 5321<sup>#</sup>

G A R PREDESTINED<sup>#</sup>

ALLOURA JEDDA Z15<sup>#</sup>

LAWSONS PREDESTINED A597<sup>#</sup>

ALLOURA JEDDA X07<sup>#</sup>

LAWSONS PAYLOAD X911<sup>#</sup>

**February 2020 TransTasman Angus Cattle Evaluation**

**Selection Indexes**

TACE	Dir	Dtrs	GL	BW	200 W	400 W	600 W	MCW	Milk
EBV	+12.6	+8.7	-7.0	+1.2	+47	+89	+110	+99	+12
ACC	57%	50%	85%	74%	69%	70%	69%	67%	62%

ABI	DOM	HGN	HGS
\$145	\$130	\$167	\$134

SS	D t C	CWT	EMA	Rib	Rump	RBV	IMF	NFI-F	Doc
-0.9	-5.4	+65	+10.6	-1.4	-0.4	-0.1	+3.6	+0.24	-
72%	44%	65%	62%	66%	63%	62%	62%	56%	-

Traits Observed: GL,BWT,200WT,400WT,SC, Scan(EMA,Rib,Rump,IMF),Genomics

Notes: A true heifer bull that still has plenty of grunt from growth to carcase. Top 10% for all \$ indexes.

Purchaser:.....\$:

**Lot 30**

**KELLY ANGUS VISIONARY L199 P263<sup>SV</sup>**

**GXNP263**

DOB: 19/08/2018 Registration Status:HBR

Genetic Status: AMFU,CAFU,DDF,NHFU

S A F CONNECTION<sup>#</sup>

C A FUTURE DIRECTION 5321<sup>#</sup>

SYDGEN C C & 7<sup>#</sup>

LAWSONS SWAGMAN A179<sup>SV</sup>

SYDGEN FOREVER LADY 4087<sup>#</sup>

LAWSONS TRAVELER T510 X240<sup>SV</sup>

Sire: USA16972676 T C A VISIONARY 158<sup>SV</sup>

Dam: VLYG8136 LAWSONS SWAGMAN G8136<sup>#</sup>

S A V 5175 BANDO 4597<sup>#</sup>

YTHANBRAE HENRY VIII U8<sup>SV</sup>

T C A TREASURE 0699 601<sup>#</sup>

LAWSONS HENRY VIII X1717<sup>#</sup>

SWEETWATER TREASURE 73M<sup>#</sup>

YTHANBRAE GLITTER R274<sup>#</sup>

**February 2020 TransTasman Angus Cattle Evaluation**

**Selection Indexes**

TACE	Dir	Dtrs	GL	BW	200 W	400 W	600 W	MCW	Milk
EBV	+4.5	-0.3	-4.0	+3.9	+47	+85	+103	+75	+12
ACC	57%	48%	85%	74%	69%	70%	68%	66%	61%

ABI	DOM	HGN	HGS
\$133	\$126	\$137	\$130

SS	D t C	CWT	EMA	Rib	Rump	RBV	IMF	NFI-F	Doc
+1.5	-6.6	+63	+9.6	+0.6	+1.4	+1.1	+1.8	+0.57	-
73%	39%	62%	61%	65%	62%	61%	60%	49%	-

Traits Observed: GL,BWT,200WT,400WT,SC, Scan(EMA,Rib,Rump,IMF),Genomics

Notes: A clean fronted, deep bodied Visionary son that offers positive fats and is top 5% for EMA.

Purchaser:.....\$:

## Lot 31

## KELLY ANGUS VISIONARY P273<sup>SV</sup>

### GXNP273



DOB: 17/08/2018

Registration Status: HBR

Genetic Status: AMFU, CAFU, DDF, NHFU

S A F CONNECTION#

TC TOTAL 410#

SYDGEN C C & 7#

LAWSONS NOVAK E313<sup>SV</sup>

SYDGEN FOREVER LADY 4087#

LAWSONS PREDESTINED B770<sup>SV</sup>

Sire: USA16972676 T C A VISIONARY 158<sup>SV</sup>

Dam: VLYK1532 LAWSONS NOVAK K1532#

S A V 5175 BANDO 4597#

LAWSONS TANK B1155<sup>PV</sup>

T C A TREASURE 0699 601#

LAWSONS TANK B1155 H8021#

SWEETWATER TREASURE 73M#

LAWSONS HIGH GRADE C8431#

### February 2020 TransTasman Angus Cattle Evaluation

TACE	Dir	Dtrs	GL	BW	200 W	400 W	600 W	MCW	Milk
EBV	+4.5	+1.8	-6.2	+2.7	+51	+85	+113	+98	+19
ACC	59%	49%	85%	74%	68%	69%	68%	67%	61%

SS	D t C	CWT	EMA	Rib	Rump	RBV	IMF	NFI-F	Doc
+3.0	-6.9	+64	+7.8	-0.1	-1.8	+1.5	+2.4	-0.06	-
72%	41%	63%	62%	66%	63%	62%	62%	52%	-

### Selection Indexes

ABI	DOM	HGN	HGS
\$137	\$123	\$151	\$128

Traits Observed: GL, BWT, 200WT, 400WT, SC, Scan(EMA, Rib, Rump, IMF), Genomics

Notes: Top 20% for all \$Indexes with good calving ease and low BW.

Purchaser: ..... \$: .....

## Lot 32

## KELLY ANGUS VISIONARY P213<sup>SV</sup>

### GXNP213

DOB: 5/08/2018

Registration Status: HBR

Genetic Status: AMFU, CAFU, DDF, NHFU

S A F CONNECTION#

TUWHARETOA REGENT D145<sup>PV</sup>

SYDGEN C C & 7#

TOPBOS AMBASSADOR F4<sup>PV</sup>

SYDGEN FOREVER LADY 4087#

TUWHARETOA C115<sup>SV</sup>

Sire: USA16972676 T C A VISIONARY 158<sup>SV</sup>

Dam: VLYJ1188 LAWSONS AMBASSADOR J1188#

S A V 5175 BANDO 4597#

L T 598 BANDO 9074#

T C A TREASURE 0699 601#

LAWSONS BANDO D4<sup>SV</sup>

SWEETWATER TREASURE 73M#

LAWSONS GAR PREDESTINED B655#

### February 2020 TransTasman Angus Cattle Evaluation

TACE	Dir	Dtrs	GL	BW	200 W	400 W	600 W	MCW	Milk
EBV	+3.2	-2.3	-1.2	+4.0	+46	+82	+103	+85	+16
ACC	59%	50%	68%	74%	70%	70%	67%	65%	61%

SS	D t C	CWT	EMA	Rib	Rump	RBV	IMF	NFI-F	Doc
+3.2	-4.9	+61	+9.1	-1.4	-2.5	+2.0	+2.9	+0.19	-
72%	40%	62%	60%	64%	61%	60%	60%	49%	-

### Selection Indexes

ABI	DOM	HGN	HGS
\$130	\$122	\$149	\$120

Traits Observed: BWT, 200WT, 400WT, SC, Scan(EMA, Rib, Rump, IMF), Genomics

Notes: Plenty of bone, great carcass, top 10% for EMA.

Purchaser: ..... \$: .....

## Lot 33

## KELLY ANGUS VISIONARY P249<sup>SV</sup>

### GXNP249

DOB: 17/08/2018

Registration Status: HBR

Genetic Status: AMFU, CAFU, DDF, NHFU

S A F CONNECTION#

ROCKN D AMBUSH 1531#

SYDGEN C C & 7#

B/R AMBUSH 28#

SYDGEN FOREVER LADY 4087#

B/R RUBY OF TIFFANY 8250#

Sire: USA16972676 T C A VISIONARY 158<sup>SV</sup>

Dam: VLYE336 LAWSONS AMBUSH E336#

S A V 5175 BANDO 4597#

RITO 2V1 OF 2536 1407#

T C A TREASURE 0699 601#

LAWSONS RITO 2V1 B443#

SWEETWATER TREASURE 73M#

LAWSONS FUTURE DIRECTION X907#

### February 2020 TransTasman Angus Cattle Evaluation

TACE	Dir	Dtrs	GL	BW	200 W	400 W	600 W	MCW	Milk
EBV	+0.4	+0.7	-3.5	+5.7	+58	+100	+132	+126	+15
ACC	59%	50%	85%	75%	70%	71%	69%	67%	63%

SS	D t C	CWT	EMA	Rib	Rump	RBV	IMF	NFI-F	Doc
+2.4	-2.7	+72	+10.9	-2.3	-3.5	+2.9	+1.8	+0.15	-
73%	42%	63%	62%	66%	63%	62%	62%	50%	-

### Selection Indexes

ABI	DOM	HGN	HGS
\$136	\$127	\$150	\$131

Traits Observed: GL, BWT, 200WT, 400WT, SC, Scan(EMA, Rib, Rump, IMF), Genomics

Notes: A larger framed high growth Visionary son with a massive EMA.

Purchaser: ..... \$: .....



**Lot 34**

**KELLY ANGUS KODAK P187<sup>SV</sup>**

**GXNP187**



DOB: **23/07/2018** Registration Status: **HBR**

Genetic Status: **AMF,CAFU,DDF,NHFU**

BOOROOMOOKA UNDERTAKEN Y145<sup>PV</sup>

C R A BEXTOR 872 5205 608<sup>#</sup>

RENNYLEA EDMUND E11<sup>PV</sup>

G A R PROPHET<sup>SV</sup>

LAWSONS HENRY VIII Y5<sup>SV</sup>

G A R OBJECTIVE 1885<sup>#</sup>

Sire: NORK522 RENNYLEA KODAK K522<sup>SV</sup>

Dam: GXNM30 KELLY ANGUS PROPHET M30<sup>#</sup>

TE MANIA BERKLEY B1<sup>PV</sup>

AYRVALE BARTEL E7<sup>PV</sup>

RENNYLEA EISA ERICA F810<sup>#</sup>

LAWSONS BARTEL E7 J1175<sup>#</sup>

RENNYLEA EISA ERICA C299<sup>PV</sup>

LAWSONS SELECTIVE F8346<sup>SV</sup>

**February 2020 TransTasman Angus Cattle Evaluation**

**Selection Indexes**

TACE	Dir	Dtrs	GL	BW	200 W	400 W	600 W	MCW	Milk
<b>EBV</b>	<b>+8.8</b>	<b>+9.1</b>	<b>-3.7</b>	<b>+3.2</b>	<b>+53</b>	<b>+92</b>	<b>+121</b>	<b>+100</b>	<b>+22</b>
ACC	57%	51%	85%	74%	69%	70%	69%	65%	57%

ABI	DOM	HGN	HGS
\$159	\$136	\$180	\$146

SS	D t C	CWT	EMA	Rib	Rump	RBV	IMF	NFI-F	Doc
<b>+2.3</b>	<b>-7.8</b>	<b>+66</b>	<b>+10.1</b>	<b>+0.7</b>	<b>+0.1</b>	<b>+0.8</b>	<b>+3.1</b>	<b>+0.55</b>	-
73%	43%	65%	64%	67%	64%	65%	63%	57%	-

*Traits Observed:* GL,CE,BWT,200WT,400WT,SC, Scan(EMA,Rib,Rump,IMF),Genomics

Notes: This Kodak/Prophet blend has really hit its mark. Great calving ease, good growth, lower mature cow weight, great carcase figures and in the Top 2% for all \$Indexes. Used in herd.

Purchaser:..... \$:.....

**Lot 35**

**KELLY ANGUS KODAK P201<sup>SV</sup>**

**GXNP201**



DOB: **29/07/2018** Registration Status: **HBR**

Genetic Status: **AMFU,CAFU,DDF,NHFU**

BOOROOMOOKA UNDERTAKEN Y145<sup>PV</sup>

C R A BEXTOR 872 5205 608<sup>#</sup>

RENNYLEA EDMUND E11<sup>PV</sup>

G A R PROPHET<sup>SV</sup>

LAWSONS HENRY VIII Y5<sup>SV</sup>

G A R OBJECTIVE 1885<sup>#</sup>

Sire: NORK522 RENNYLEA KODAK K522<sup>SV</sup>

Dam: VLYK1417 LAWSONS PROPHET K1417<sup>#</sup>

TE MANIA BERKLEY B1<sup>PV</sup>

LAWSONS TANK X1235<sup>#</sup>

RENNYLEA EISA ERICA F810<sup>#</sup>

LAWSONS TANK E468<sup>#</sup>

RENNYLEA EISA ERICA C299<sup>PV</sup>

LAWSONS FAIR DINKUM B1483<sup>#</sup>

**February 2020 TransTasman Angus Cattle Evaluation**

**Selection Indexes**

TACE	Dir	Dtrs	GL	BW	200 W	400 W	600 W	MCW	Milk
<b>EBV</b>	<b>+3.8</b>	<b>+5.5</b>	<b>-6.0</b>	<b>+4.2</b>	<b>+57</b>	<b>+104</b>	<b>+129</b>	<b>+120</b>	<b>+14</b>
ACC	58%	51%	71%	74%	69%	69%	69%	66%	58%

ABI	DOM	HGN	HGS
\$162	\$137	\$191	\$145

SS	D t C	CWT	EMA	Rib	Rump	RBV	IMF	NFI-F	Doc
<b>+1.1</b>	<b>-7.9</b>	<b>+77</b>	<b>+5.8</b>	<b>+1.3</b>	<b>+1.9</b>	<b>-1.0</b>	<b>+4.1</b>	<b>+0.43</b>	-
73%	43%	66%	64%	68%	65%	66%	64%	57%	-

*Traits Observed:* BWT,200WT,SC,Scan(EMA,Rib, IMF),Genomics

Notes: Another Kodak son that we have used in herd. A bull that was at the top of his drop right from a calf. Top 1% for IMF, ABI, DOM, and HGRAIN.

Purchaser:..... \$:.....

**Lot 36**

**KELLY ANGUS KODAK P253<sup>SV</sup>**

**GXNP253**



DOB: **20/08/2018** Registration Status: **HBR**

Genetic Status: **AMFU,CAFU,DDF,NHFU**

BOOROOMOOKA UNDERTAKEN Y145<sup>PV</sup>

TE MANIA ULONG U41<sup>SV</sup>

RENNYLEA EDMUND E11<sup>PV</sup>

TE MANIA AFRICA A217<sup>PV</sup>

LAWSONS HENRY VIII Y5<sup>SV</sup>

TE MANIA JEDDA Y32<sup>SV</sup>

Sire: NORK522 RENNYLEA KODAK K522<sup>SV</sup>

Dam: VLYH995 LAWSONS AFRICA H995<sup>#</sup>

TE MANIA BERKLEY B1<sup>PV</sup>

TC TOTAL 410<sup>#</sup>

RENNYLEA EISA ERICA F810<sup>#</sup>

LAWSONS TOTAL F880<sup>#</sup>

RENNYLEA EISA ERICA C299<sup>PV</sup>

LAWSONS YIELD GRADE A600<sup>SV</sup>

**February 2020 TransTasman Angus Cattle Evaluation**

**Selection Indexes**

TACE	Dir	Dtrs	GL	BW	200 W	400 W	600 W	MCW	Milk
<b>EBV</b>	<b>+6.9</b>	<b>+6.7</b>	<b>-5.8</b>	<b>+2.3</b>	<b>+44</b>	<b>+81</b>	<b>+107</b>	<b>+116</b>	<b>+17</b>
ACC	59%	53%	72%	75%	70%	71%	70%	67%	59%

ABI	DOM	HGN	HGS
\$141	\$122	\$171	\$126

SS	D t C	CWT	EMA	Rib	Rump	RBV	IMF	NFI-F	Doc
<b>+4.0</b>	<b>-6.3</b>	<b>+50</b>	<b>+7.2</b>	<b>+0.5</b>	<b>-0.4</b>	<b>+0.3</b>	<b>+4.0</b>	<b>+0.42</b>	-
73%	46%	66%	65%	69%	66%	67%	64%	58%	-

*Traits Observed:* BWT,200WT,400WT,SC, Scan(EMA,Rib,Rump,IMF),Genomics

Notes: This moderate framed Kodak son is another heifer bull that has even growth and is in the top 5% for IMF. A bull with a fantastic temperament, used in herd.

Purchaser:..... \$:.....

## Lot 37

## KELLY ANGUS KODAK P165<sup>SV</sup>

GXNP165



DOB: 17/07/2018 Registration Status: HBR

Genetic Status: AMF,CAFU,DDF,NHF

BOOROOMOOKA UNDERTAKEN Y145<sup>PV</sup>

TE MANIA BERKLEY B1<sup>PV</sup>

RENNYLEA EDMUND E11<sup>PV</sup>

MILWILLAH FEVOLA F37<sup>PV</sup>

LAWSONS HENRY VIII Y5<sup>SV</sup>

MILWILLAH BARUNAH B36<sup>SV</sup>

Sire: NORK522 RENNYLEA KODAK K522<sup>SV</sup>

Dam: GXNM105 KELLY ANGUS FEVOLA M105<sup>#</sup>

TE MANIA BERKLEY B1<sup>PV</sup>

TC TOTAL 410<sup>#</sup>

RENNYLEA EISA ERICA F810<sup>#</sup>

LAWSONS TOTAL E843<sup>#</sup>

RENNYLEA EISA ERICA C299<sup>PV</sup>

LAWSONS NEW DESIGN 1407 Z372<sup>#</sup>

### February 2020 TransTasman Angus Cattle Evaluation

### Selection Indexes

TACE	Dir	Dtrs	GL	BW	200 W	400 W	600 W	MCW	Milk
EBV	+9.7	+11.8	-9.8	+1.7	+45	+86	+121	+116	+13
ACC	56%	49%	85%	74%	69%	70%	69%	64%	56%

ABI	DOM	HGN	HGS
\$151	\$123	\$175	\$137

SS	D t C	CWT	EMA	Rib	Rump	RBV	IMF	NFI-F	Doc
+3.1	-7.4	+64	+5.1	+1.9	+1.0	-0.7	+3.3	+0.54	-
73%	42%	64%	63%	67%	64%	65%	63%	56%	-

Traits Observed: GL,CE,BWT,200WT,400WT,SC, Scan(EMA,Rib,Rump,IMF),Genomics

Notes: Kodak has really put his stamp on this one, low birthweight, fantastic calving ease, short gestation, positive fats and top 10% of the breed for IMF.

Purchaser:..... \$:.....

## Lot 38

## KELLY ANGUS KODAK P171<sup>SV</sup>

GXNP171



DOB: 17/07/2018 Registration Status: HBR

Genetic Status: AMFU,CAFU,DDF,NHFU

BOOROOMOOKA UNDERTAKEN Y145<sup>PV</sup>

AYRVALE BARTEL E7<sup>PV</sup>

RENNYLEA EDMUND E11<sup>PV</sup>

AYRVALE HERCULES H9<sup>PV</sup>

LAWSONS HENRY VIII Y5<sup>SV</sup>

LAWSONS INVINCIBLE F338<sup>SV</sup>

Sire: NORK522 RENNYLEA KODAK K522<sup>SV</sup>

Dam: GXNM32 KELLY ANGUS HERCULES M32<sup>#</sup>

TE MANIA BERKLEY B1<sup>PV</sup>

TUWHARETOA REGENT D145<sup>PV</sup>

RENNYLEA EISA ERICA F810<sup>#</sup>

LAWSONS REGENT J1178<sup>#</sup>

RENNYLEA EISA ERICA C299<sup>PV</sup>

LAWSONS DINKY DI E537<sup>#</sup>

### February 2020 TransTasman Angus Cattle Evaluation

### Selection Indexes

TACE	Dir	Dtrs	GL	BW	200 W	400 W	600 W	MCW	Milk
EBV	+10.0	+7.7	-6.9	+1.3	+50	+94	+121	+99	+25
ACC	56%	49%	85%	74%	69%	70%	69%	64%	56%

ABI	DOM	HGN	HGS
\$157	\$136	\$187	\$142

SS	D t C	CWT	EMA	Rib	Rump	RBV	IMF	NFI-F	Doc
+3.0	-6.2	+72	+7.7	+0.1	-1.1	+0.8	+3.9	+0.58	-
73%	42%	65%	63%	67%	64%	65%	63%	56%	-

Traits Observed: GL,CE,BWT,200WT,400WT,SC, Scan(EMA,Rib,Rump,IMF),Genomics

Notes: The last Kodak son in the sale, will not disappoint being in the top 10% for Calving ease, top 5% for BW followed by an impressive EMA and is in the top 5% for IMF and ABI, very high ranking across the board. Presents in lighter condition as was used in herd.

Purchaser:..... \$:.....

## Lot 39

## KELLY ANGUS K2 P216<sup>SV</sup>

GXNP216

DOB: 5/08/2018 Registration Status: HBR

Genetic Status: AMFU,CAFU,DDF,NHFU

GARDENS PRIME STAR<sup>#</sup>

BON VIEW NEW DESIGN 208<sup>SV</sup>

KC HAAS GPS<sup>#</sup>

TC TOTAL 410<sup>#</sup>

KCH ELINE 549<sup>#</sup>

TC ERICA EILEEN 2047<sup>#</sup>

Sire: DXTK002 TEXAS MOUNT K002<sup>PV</sup>

Dam: VLYE356 LAWSONS TOTAL E356<sup>#</sup>

BUSHS GRAND DESIGN<sup>#</sup>

LAWSONS GAR FAIR DINKUM Z197<sup>PV</sup>

TEXAS UNDINE Z183<sup>PV</sup>

LAWSONS FAIR DINKUM B436<sup>#</sup>

TEXAS UNDINE X221<sup>#</sup>

LAWSONS PARAMOUNT X545<sup>#</sup>

### February 2020 TransTasman Angus Cattle Evaluation

### Selection Indexes

TACE	Dir	Dtrs	GL	BW	200 W	400 W	600 W	MCW	Milk
EBV	+1.8	-0.4	-1.5	+4.6	+52	+92	+123	+136	+12
ACC	60%	51%	85%	75%	71%	71%	70%	69%	65%

ABI	DOM	HGN	HGS
\$119	\$112	\$133	\$114

SS	D t C	CWT	EMA	Rib	Rump	RBV	IMF	NFI-F	Doc
+3.1	-3.6	+62	+5.8	-2.2	-3.0	+1.5	+1.9	-0.49	-
74%	42%	64%	63%	66%	64%	63%	62%	52%	-

Traits Observed: GL,BWT,200WT,400WT,SC, Scan(EMA,Rib,Rump,IMF),Genomics

Notes: Plenty of power with an even set of EBVs.

Purchaser:..... \$:.....

**Lot 40**

**KELLY ANGUS K2 P188<sup>SV</sup>**

**GXNP188**



DOB: 23/07/2018

Registration Status: ABR

Genetic Status: AMFU, CAFU, DDF, NHFU

GARDENS PRIME STAR#

G A R PREDESTINED#

KC HAAS GPS#

THOMAS GRADE UP 6849<sup>SV</sup>

KCH ELINE 549#

THOMAS MISS LUCY 4206#

Sire: DXTK002 TEXAS MOUNT K002<sup>PV</sup>

Dam: VLYE676 LAWSONS GRADE UP E676#

BUSHS GRAND DESIGN#

G A R YIELD GRADE#

TEXAS UNDINE Z183<sup>PV</sup>

LAWSONS YIELD GRADE A373#

TEXAS UNDINE X221#

LAWSONS HENRY VIII X1341#

**February 2020 TransTasman Angus Cattle Evaluation**

**Selection Indexes**

TACE	Dir	Dtrs	GL	BW	200 W	400 W	600 W	MCW	Milk
EBV	+4.3	+7.2	-9.8	+4.1	+53	+99	+125	+110	+19
ACC	59%	50%	85%	75%	70%	71%	70%	68%	64%

ABI	DOM	HGN	HGS
\$141	\$129	\$156	\$134

SS	D t C	CWT	EMA	Rib	Rump	RBV	IMF	NFI-F	Doc
+2.5	-4.9	+73	+6.7	+0.8	-0.2	+0.5	+2.6	+0.17	-
74%	41%	63%	62%	65%	64%	62%	61%	51%	-

Traits Observed: GL,BWT,200WT,400WT,SC, Scan(EMA,Rib,Rump,IMF),Genomics

Notes: Impressive calving ease, moderate birth weight with consistent growth traits, puts him in the top 10% for ABI.

Purchaser:..... \$:.....

**Lot 41**

**KELLY ANGUS K2 P235<sup>SV</sup>**

**GXNP235**



DOB: 15/08/2018

Registration Status: HBR

Genetic Status: AMFU, CAFU, DDF, NHFU

GARDENS PRIME STAR#

G A R PREDESTINED#

KC HAAS GPS#

G A R PROGRESS<sup>SV</sup>

KCH ELINE 549#

G A R OBJECTIVE 2345#

Sire: DXTK002 TEXAS MOUNT K002<sup>PV</sup>

Dam: VLYG317 LAWSONS PROGRESS G317#

BUSHS GRAND DESIGN#

LAWSONS TANK X1235#

TEXAS UNDINE Z183<sup>PV</sup>

LAWSONS TANK E812#

TEXAS UNDINE X221#

LAWSONS NEW DESIGN 1407 Z1471#

**February 2020 TransTasman Angus Cattle Evaluation**

**Selection Indexes**

TACE	Dir	Dtrs	GL	BW	200 W	400 W	600 W	MCW	Milk
EBV	+6.6	+4.8	-6.9	+4.0	+44	+84	+112	+115	+13
ACC	59%	50%	85%	75%	70%	70%	69%	68%	63%

ABI	DOM	HGN	HGS
\$120	\$110	\$131	\$116

SS	D t C	CWT	EMA	Rib	Rump	RBV	IMF	NFI-F	Doc
+1.9	-3.6	+55	+4.9	-0.2	+0.6	-0.1	+2.4	+0.03	-
73%	41%	63%	62%	65%	63%	61%	61%	50%	-

Traits Observed: GL,BWT,200WT,400WT,SC, Scan(EMA,Rib,Rump,IMF),Genomics

Notes: A K2 son with great calving ease, and good carcass traits. A larger framed bull that will breed well over moderate cows.

Purchaser:..... \$:.....

**Lot 42**

**KELLY ANGUS K2 P285<sup>SV</sup>**

**GXNP285**



DOB: 25/08/2018

Registration Status: HBR

Genetic Status: AMFU, CAFU, DDFU, NHFU

GARDENS PRIME STAR#

TUWHARETOA REGENT D145<sup>PV</sup>

KC HAAS GPS#

PARINGA JUDD J5<sup>PV</sup>

KCH ELINE 549#

STRATHEWEN BERKLEY WILPENA F30<sup>PV</sup>

Sire: DXTK002 TEXAS MOUNT K002<sup>PV</sup>

Dam: VLYL1174 LAWSONS JUDD L1174#

BUSHS GRAND DESIGN#

LAWSONS PREDESTINED B395<sup>PV</sup>

TEXAS UNDINE Z183<sup>PV</sup>

LAWSONS PREDESTINED B395 E1956#

TEXAS UNDINE X221#

LAWSONS FAIR DINKUM B1766#

**February 2020 TransTasman Angus Cattle Evaluation**

**Selection Indexes**

TACE	Dir	Dtrs	GL	BW	200 W	400 W	600 W	MCW	Milk
EBV	+10.1	+4.4	-3.0	+2.6	+48	+86	+113	+93	+18
ACC	58%	49%	85%	72%	68%	69%	68%	67%	61%

ABI	DOM	HGN	HGS
\$131	\$115	\$144	\$123

SS	D t C	CWT	EMA	Rib	Rump	RBV	IMF	NFI-F	Doc
+3.2	-6.7	+60	+7.2	+1.6	+0.7	-1.2	+3.0	+0.27	-
72%	39%	62%	61%	64%	62%	60%	60%	49%	-

Traits Observed: GL,BWT,200WT,400WT,SC, Scan(EMA,Rib,Rump,IMF),Genomics

Notes: Fantastic calving ease backed up by positive fats, good EMA and Marbling.

Purchaser:..... \$:.....

## Lot 43 KELLY ANGUS K2 P167<sup>SV</sup> GXNP167



DOB: 17/07/2018 Registration Status: HBR Genetic Status: AMF,CAFU,DDF,NHFU  
 GARDENS PRIME STAR# C R A BEXTOR 872 5205 608#  
 KC HAAS GPS# KCH ELINE 549# G A R PROPHET<sup>SV</sup>  
 Sire: DXTK002 TEXAS MOUNT K002<sup>PV</sup> Dam: GXNM75 KELLY ANGUS PROPHET M75#  
 BUSHS GRAND DESIGN#  
 TEXAS UNDINE Z183<sup>PV</sup> LAWSONS INVINCIBLE C402<sup>PV</sup>  
 TEXAS UNDINE X221# LAWSONS INVINCIBLE G1775#  
 LAWSONS YIELD GRADE A693#

### February 2020 TransTasman Angus Cattle Evaluation

TACE	Dir	Dtrs	GL	BW	200 W	400 W	600 W	MCW	Milk
EBV	+10.1	+5.4	-8.5	+1.4	+46	+89	+117	+107	+18
ACC	59%	50%	85%	74%	69%	70%	69%	66%	61%

SS	D t C	CWT	EMA	Rib	Rump	RBV	IMF	NFI-F	Doc
+1.5	-4.6	+69	+2.7	-1.3	+0.1	-0.6	+2.1	-0.01	-
73%	41%	62%	61%	65%	63%	61%	61%	50%	-

### Selection Indexes

ABI	DOM	HGN	HGS
\$119	\$111	\$126	\$116

Traits Observed: GL,CE,BWT,200WT,400WT,SC, Scan(EMA,Rib,Rump,IMF),Genomics

Notes: A K2/Prophet cross that has blended really well. A bull with plenty of length and width, great calving ease and a low BW.

Purchaser:..... \$:.....

## Lot 44 KELLY ANGUS KATAPULT P218<sup>SV</sup> GXNP218



DOB: 8/08/2018 Registration Status: HBR Genetic Status: AMFU,CAFU,DDF,NHFU  
 S A V FINAL ANSWER 0035# TC TOTAL 410#  
 S A V THUNDERBIRD 9061<sup>SV</sup> LAWSONS NOVAK E313<sup>SV</sup>  
 S A V EMBLYNETTE 7411# LAWSONS PREDESTINED B770<sup>SV</sup>  
 Sire: CXBK1 PRIME KATAPULT K1<sup>SV</sup> Dam: VLYH1064 LAWSONS NOVAK H1064#  
 TE MANIA EMPEROR E343<sup>PV</sup> G A R ULTIMATE#  
 PRIME JEDDA H81# LAWSONS ULTIMATE E371#  
 PRIME JEDDA E36# LAWSONS NEW DESIGN 14074 B768<sup>SV</sup>

### February 2020 TransTasman Angus Cattle Evaluation

TACE	Dir	Dtrs	GL	BW	200 W	400 W	600 W	MCW	Milk
EBV	+3.0	+0.8	-9.3	+2.9	+59	+104	+133	+117	+14
ACC	56%	48%	85%	74%	69%	69%	67%	65%	58%

SS	D t C	CWT	EMA	Rib	Rump	RBV	IMF	NFI-F	Doc
+1.2	-2.9	+81	+8.4	-0.7	-2.5	+1.4	+2.1	+0.09	-
72%	40%	60%	59%	63%	61%	60%	59%	49%	-

### Selection Indexes

ABI	DOM	HGN	HGS
\$136	\$128	\$147	\$132

Traits Observed: GL,BWT,200WT,400WT,SC, Scan(EMA,Rib,Rump,IMF),Genomics

Notes: A well muscled deep bodied Katapult son that combines short gestation, low BW, high growth and a high EMA he is sure to tick a lot of boxes.

Purchaser:..... \$:.....

## Lot 45 KELLY ANGUS KATAPULT P276<sup>SV</sup> GXNP276

DOB: 21/08/2018 Registration Status: APR Genetic Status: AMC,CAFU,DDF,NHFU  
 S A V FINAL ANSWER 0035# LAWSONS TANK X1235#  
 S A V THUNDERBIRD 9061<sup>SV</sup> LAWSONS TANK B1155<sup>PV</sup>  
 S A V EMBLYNETTE 7411# LAWSONS NEW DESIGN 1407 Z1393<sup>SV</sup>  
 Sire: CXBK1 PRIME KATAPULT K1<sup>SV</sup> Dam: VLYG274 LAWSONS TANK B1155 G274#  
 TE MANIA EMPEROR E343<sup>PV</sup> TC TOTAL 410#  
 PRIME JEDDA H81# LAWSONS TOTAL E459#  
 PRIME JEDDA E36# LAWSONS SOLUTION B663#

### February 2020 TransTasman Angus Cattle Evaluation

TACE	Dir	Dtrs	GL	BW	200 W	400 W	600 W	MCW	Milk
EBV	+5.0	-1.1	-4.7	+2.8	+52	+99	+127	+143	+17
ACC	56%	49%	85%	74%	69%	70%	67%	65%	59%

SS	D t C	CWT	EMA	Rib	Rump	RBV	IMF	NFI-F	Doc
+2.0	-3.3	+71	+7.2	-1.0	-3.5	+0.9	+2.5	-0.31	-
73%	41%	61%	60%	64%	62%	60%	59%	50%	-

### Selection Indexes

ABI	DOM	HGN	HGS
\$125	\$117	\$144	\$117

Traits Observed: GL,BWT,200WT,400WT,SC, Scan(EMA,Rib,Rump,IMF),Genomics

Notes: A Katapult son with amazing growth, if you are looking to increase your cow size this will be the bull for you.

Purchaser:..... \$:.....

**Lot 46**

**KELLY ANGUS KATAPULT P225<sup>SV</sup>**

**GXNP225**



DOB: **13/08/2018** Registration Status: **HBR**  
 S A V FINAL ANSWER 0035#  
 S A V THUNDERBIRD 9061<sup>SV</sup>  
 S A V EMBLYNETTE 7411#  
 Sire: CXBK1 PRIME KATAPULT K1<sup>SV</sup>  
 TE MANIA EMPEROR E343<sup>PV</sup>  
 PRIME JEDDA H81#  
 PRIME JEDDA E36#

Genetic Status: **AMFU,CAFU,DDF,NHF**  
 S S OBJECTIVE T510 0T26#  
 G A R SELECTIVE#  
 G A R 1407 NEW DESIGN 803#  
 G A R PINNACLE#  
 LAWSONS GAR PINNACLE Y576#  
 G A R NEW DESIGN A251#

**February 2020 TransTasman Angus Cattle Evaluation**

TACE	Dir	Dtrs	GL	BW	200 W	400 W	600 W	MCW	Milk
EBV	+10.8	+3.0	-9.0	+0.6	+52	+89	+114	+91	+18
ACC	56%	47%	85%	74%	69%	69%	67%	64%	58%

SS	D t C	CWT	EMA	Rib	Rump	RBV	IMF	NFI-F	Doc
+2.4	-6.4	+61	+6.6	+2.2	+1.2	+0.4	+1.5	+0.34	-
72%	38%	60%	59%	63%	60%	59%	58%	46%	-

**Selection Indexes**

ABI	DOM	HGN	HGS
\$128	\$120	\$126	\$127

*Traits Observed:* GL,BWT,200WT,400WT,SC, Scan(EMA,Rib,Rump,IMF),Genomics

Notes: A well put together Katapult son with positive fats. Great depth of body in this easy doing bull.

Purchaser:..... \$:.....

**Lot 47**

**KELLY ANGUS KATAPULT P162<sup>SV</sup>**

**GXNP162**



DOB: **13/07/2018** Registration Status: **HBR**  
 S A V FINAL ANSWER 0035#  
 S A V THUNDERBIRD 9061<sup>SV</sup>  
 S A V EMBLYNETTE 7411#  
 Sire: CXBK1 PRIME KATAPULT K1<sup>SV</sup>  
 TE MANIA EMPEROR E343<sup>PV</sup>  
 PRIME JEDDA H81#  
 PRIME JEDDA E36#

Genetic Status: **AMF,CAFU,DDFU,NHFU**  
 TUWHARETOA REGENT D145<sup>PV</sup>  
 PARINGA JUDD J5<sup>PV</sup>  
 STRATHEWEN BERKLEY WILPENA F30<sup>PV</sup>  
 Dam: GXNM52 KELLY ANGUS JUDD M52#  
 LAWSONS NOVAK E313<sup>SV</sup>  
 LAWSONS NOVAK H972#  
 LAWSONS ULTIMATE F613#

**February 2020 TransTasman Angus Cattle Evaluation**

TACE	Dir	Dtrs	GL	BW	200 W	400 W	600 W	MCW	Milk
EBV	+7.6	+0.9	-10.0	+2.3	+53	+90	+122	+93	+17
ACC	56%	47%	85%	74%	68%	69%	67%	63%	56%

SS	D t C	CWT	EMA	Rib	Rump	RBV	IMF	NFI-F	Doc
+1.9	-5.3	+70	+7.8	+2.6	+1.2	+0.3	+1.5	+0.34	-
72%	38%	60%	59%	63%	61%	59%	58%	48%	-

**Selection Indexes**

ABI	DOM	HGN	HGS
\$131	\$118	\$130	\$131

*Traits Observed:* GL,CE,BWT,200WT,400WT,SC, Scan(EMA,Rib,Rump,IMF),Genomics

Notes: This Katapult son is well muscled. A pleasant bull to have around that boasts calving ease, positive fats and a great EMA.

Purchaser:..... \$:.....

**Lot 48**

**KELLY ANGUS INDEX P303<sup>SV</sup>**

**GXNP303**



DOB: **16/09/2018** Registration Status: **APR**  
 G A R NEW DESIGN 5050#  
 G A R INGENUITY#  
 G A R OBJECTIVE 1067#  
 Sire: USA17513381 V A R INDEX 3282<sup>PV</sup>  
 CONNEALY ONWARD#  
 SANDPOINT BLACKBIRD 8809#  
 RIVERBEND BLACKBIRD 4301#

Genetic Status: **AMFU,CAFU,DDF,NHFU**  
 B/R NEW DESIGN 036#  
 G A R NEW DESIGN 5050#  
 G A R PRECISION 706#  
 Dam: VLYG249 LAWSONS NEW DESIGN 5050 G249#  
 LAWSONS PAYLOAD X951#  
 LAWSONS PAYLOAD X951 E225#  
 LAWSONS FAIR DINKUM B1021#

**February 2020 TransTasman Angus Cattle Evaluation**

TACE	Dir	Dtrs	GL	BW	200 W	400 W	600 W	MCW	Milk
EBV	+3.6	+3.8	-2.3	+1.8	+41	+83	+102	+79	+26
ACC	58%	50%	85%	75%	70%	71%	70%	69%	64%

SS	D t C	CWT	EMA	Rib	Rump	RBV	IMF	NFI-F	Doc
-0.3	-3.3	+59	+7.9	-1.4	-2.6	+1.3	+2.5	-0.19	-
73%	41%	65%	63%	67%	64%	63%	63%	51%	-

**Selection Indexes**

ABI	DOM	HGN	HGS
\$118	\$117	\$129	\$113

*Traits Observed:* GL,BWT,200WT,400WT,SC, Scan(EMA,Rib,Rump,IMF),Genomics

Notes: An Index son that has plenty of calving ease and a low BW. A well put together bull with good muscling.

Purchaser:..... \$:.....

## Lot 49

## KELLY ANGUS INDEX P173<sup>SV</sup>

## GXNP173



DOB: 21/07/2018

Registration Status: HBR

Genetic Status: AMFU, CAFU, DDF, NHFU

G A R NEW DESIGN 5050<sup>#</sup>

TE MANIA BERKLEY B1<sup>PV</sup>

G A R INGENUITY<sup>#</sup>

MILWILLAH FEVOLA F37<sup>PV</sup>

G A R OBJECTIVE 1067<sup>#</sup>

MILWILLAH BARUNAH B36<sup>SV</sup>

Sire: USA17513381 V A R INDEX 3282<sup>PV</sup>

Dam: GXNM99 KELLY ANGUS FEVOLA M99<sup>#</sup>

CONNEALY ONWARD<sup>#</sup>

G A R SOLUTION<sup>SV</sup>

SANDPOINT BLACKBIRD 8809<sup>#</sup>

LAWSONS SOLUTION E630<sup>#</sup>

RIVERBEND BLACKBIRD 4301<sup>#</sup>

LAWSONS PREDESTINED B532<sup>#</sup>

### February 2020 TransTasman Angus Cattle Evaluation

TACE	Dir	Dtrs	GL	BW	200 W	400 W	600 W	MCW	Milk
EBV	+8.8	+3.9	-6.0	+2.3	+52	+90	+111	+97	+17
ACC	56%	47%	85%	74%	69%	70%	69%	66%	59%

SS	D t C	CWT	EMA	Rib	Rump	RBV	IMF	NFI-F	Doc
+1.8	-5.5	+71	+13.8	-0.3	-1.5	+2.1	+2.0	+0.49	-
72%	39%	62%	61%	64%	62%	61%	60%	48%	-

### Selection Indexes

ABI	DOM	HGN	HGS
\$140	\$132	\$149	\$134

Traits Observed: GL, CE, BWT, 200WT, 400WT, SC, Scan(EMA, Rib, Rump, IMF), Genomics

Notes: This bull boasts an impressive carcase data set with his EMA being +14 puts him in the Top 1% of the breed.

Purchaser: ..... \$: .....

## Lot 50

## KELLY ANGUS INCRED M112 P287<sup>SV</sup>

## GXNP287

DOB: 29/08/2018

Registration Status: APR

Genetic Status: AMFU, CAFU, DDF, NHF

AYRVALE BARTEL E7<sup>PV</sup>

AYRVALE BARTEL E7<sup>PV</sup>

LAWSONS INCREDIBLE H803<sup>PV</sup>

LAWSONS HARVARD H205<sup>PV</sup>

LAWSONS DINKY DI E447<sup>PV</sup>

LAWSONS INVINCIBLE F251<sup>SV</sup>

Sire: GXNM112 KELLY ANGUS INCREDIBLE M112<sup>SV</sup>

Dam: VLYL1328 LAWSONS HARVARD L1328<sup>#</sup>

LAWSONS NOVAK E313<sup>SV</sup>

TOPBOS AMBASSADOR F4<sup>PV</sup>

LAWSONS NOVAK J1125<sup>#</sup>

LAWSONS AMBASSADOR J1263<sup>#</sup>

LAWSONS AMBUSH F709<sup>#</sup>

LAWSONS NEW DESIGN 5050 G249<sup>#</sup>

### February 2020 TransTasman Angus Cattle Evaluation

TACE	Dir	Dtrs	GL	BW	200 W	400 W	600 W	MCW	Milk
EBV	-2.2	-0.8	-3.5	+5.1	+55	+96	+121	+81	+23
ACC	52%	46%	65%	71%	64%	65%	64%	63%	56%

SS	D t C	CWT	EMA	Rib	Rump	RBV	IMF	NFI-F	Doc
+0.8	-3.4	+72	+5.3	-2.9	-2.0	-0.1	+4.2	+0.32	-
68%	37%	59%	56%	62%	59%	59%	56%	47%	-

### Selection Indexes

ABI	DOM	HGN	HGS
\$130	\$119	\$155	\$120

Traits Observed: BWT, 200WT, 400WT, SC, Scan(EMA, Rib, Rump, IMF), Genomics

Notes: This Lawson Incredible Grandson would be suited to cows. He offers great early growth and a massive 4.1 for IMF, putting him in the top 1% of the breed. Well muscled.

Purchaser: ..... \$: .....

Top 1% Top 5% Top 10% Top 20%



ACCOMODATION NEAR

## Yea, Victoria



### Royal Mail Hotel

📍 88 High St Yea, Victoria  
 🌐 [royalmailhotelyea.com.au](http://royalmailhotelyea.com.au)  
 ☎ 03 5797 2515



### Yea Peppercorn Hotel

21A Station Street, Yea, Victoria  
[yeapeppercorn.com.au](http://yeapeppercorn.com.au)  
 03 5797 2000



### Yea Motel

📍 8 Miller St, Yea, Victoria  
 🌐 [yeamotel.com.au](http://yeamotel.com.au)  
 ☎ 03 5797 2660



### Yea Riverside Caravan Park

📍 1 Court St, Yea, Victoria  
 🌐 [yeariverside.com.au](http://yeariverside.com.au)  
 ☎ (03) 5797 2972



**MCKENZIE**  
AG SERVICES

- Supplier of grains, mixed feeds, pellets, hay and protein meals
- Ration formulation and nutrition advice
- Custom feeding: domestic, export and stud cattle

*"Many of my key clients use products and services from McKenzie Ag Services. The results have been excellent and the service cannot be faulted."*

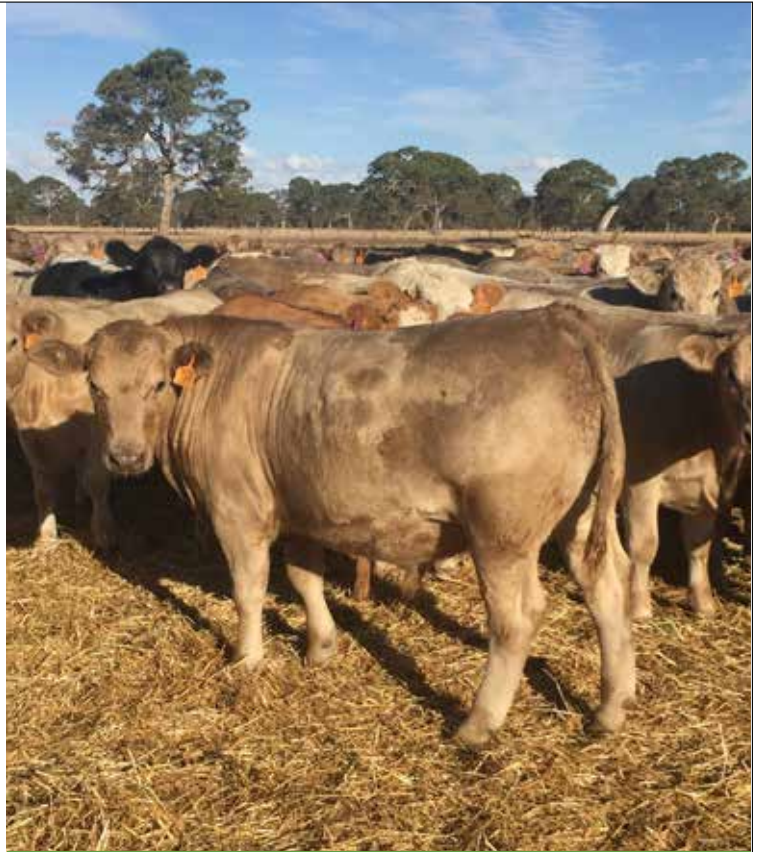
Mick Curtis - Rodwells

*"McKenzie Ag Services supply all our supplementary feed requirements for our Stud Stock as well as our commercial operation. The nutritional advice we receive is extremely helpful and we couldn't be happier with the feed quality. When it comes to feeding livestock, the products and services from McKenzie Ag come with our highest recommendation."*

Pat Joyce - Kelly Angus

*"In addition to supplying my feed and formulating my rations, I rely on McKenzie Ag Services for advice on many aspects of my feedlot business. Their combined knowledge of the grains industry and intensive livestock production is hard to come by, and has been instrumental to the success of my feedlot operations."*

Simon O'Donnell - Beef Producer



Lachlan McKenzie - P: 0417 899 221  
E: lach@mckenzieag.com.au

**YEA VETERINARY HOSPITAL**  
**13 HIGH ST, YEA**  
**(03) 5797 2333**

Dr. Anthony Dredge BVSc MACVSc

Dr. Elizabeth Crerar DVM

Dr. Niamh Fogarty BVMS

- Ultrasound pregnancy testing.
- Bull Breeding Soundness Examinations
- Disease investigations.

**Quality & Experienced Veterinary Advice.**



AUSTRALIAN  
CATTLE  
VETERINARIANS







## Conditions of sale

We trust that the Bull/s you have purchased today will perform as you expect and provide ongoing value to you.

The rigorous structural assessment practices adopted at our farm are intended to ensure that all livestock continue to meet our high standards for genetics, performance and structural integrity. Our commitment to our purchasers is second to none.

All Kelly Angus Bulls are independently assessed by Jim Green prior to sale.  
Refund and Replacement Conditions

In the event that the Bull/s, the subject of the purchase, suffers a structural breakdown within 2 years of the day of sale, the purchaser may:

- Request a full refund of the purchase price (nett of GST) subject to Conditions 1 and 2 below; or
- Seek a credit of the full purchase price (nett of GST) to be applied towards the price of a Bull to be purchased at the next Kelly Angus Stud Sale (subject to Condition 2 below); or
- Negotiate for the purchase of a

replacement Kelly Angus Bull of similar genetic make-up.

### Conditions:

1. Any claim for a refund of the purchase price must be accompanied by a full veterinary structural assessment report confirming absolutely the structural breakdown of the Bull giving rise to the claim.
2. Any refund or credit (as the case may be) will be reduced by the amount received by the purchaser from the sale or disposal of the Bull the subject of the claim.

# Notes

---

---

---

---

---

---

---

---

---

---

---

---

---

---

---

---

---

---

---

---

---

---

---

---

---

---

---

V  
K



# VK KELLY VANGUS

QUALITY STOCK & SERVICE

# VK

 0434 559 101 @vkppfarm@vkpp.com.au

 171 Nash Road, Yea VIC 3717

 [kellyangus.com.au](http://kellyangus.com.au)

